

Phaser 6200 vs. Lexmark C750



The Phaser 6200 offers more value, performance, and color expertise

Affordability

- The Phaser 6200 is a better printer for a better price than the Lexmark C750.
- The Phaser 6200 offers one of the **lowest costs-per-print** at 8.4 cents.*
- Lexmark C750 cost-per-print is 9.1 cents.*

Experience

- **Xerox/Tektronix has 20 years of color printing experience** to deliver fast, reliable printers with unrivalled color print quality. The Phaser 6200 is Xerox's 10th single pass color printer.
- The C750 is only Lexmark's second attempt at single pass technology.

Performance

Speed

Page Pipelining and the Phaser 6200's **15-second first-page-out time**, means the Phaser 6200 **prints faster than the C750** for common 1- to 5-page print jobs. Lexmark has a slow 20-second first-page-out time.

The Phaser 6200's **500 MHz PowerPC processor is faster and more efficient** than Lexmark's 350 MHz processor, thus increasing its print speed, especially on large files.

Page Pipelining increases the 6200's efficiency (and print speed) when processing multiple jobs.

Phaser 6200
5 pages / 34 seconds



Lexmark C750
5 pages / 35 seconds



The Phaser 6200 is faster even though the C750 has a higher rated engine speed. (Full color pages in default print mode)

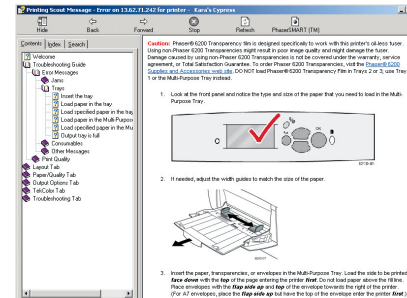
Ease-of-use

The Phaser 6200 is the first laser engine in history that does not have a cleaning blade on the OPC drum. This makes the Phaser 6200's **OPC drum life 3-times longer** than other laser printers. Yet the very small drum and compact imaging unit still yields 30,000 pages.

With the new **Phaser Installer**, network printer installation is as simple as one click.

Features such as **PrintingScout** and **PhaserSMART™** identify and help any user quickly solve printer issues themselves.

Network management with **CentreWare® Web** enables print networks to be monitored, maintained and updated using a favorite Web browser. MarkVision is limited to only checking status.



Print Quality

The Phaser 6200 uses an **oil-less chemical toner** that adheres to the surface of the page rather than soaking into the paper providing **increased intensity of the color** on the page.

Using CCT (Constant Current Transfer) technology, the Phaser 6200 can **print on a wider variety of media** while still ensuring the best quality.

Lexmark's print quality has serious problems with ghosting, gradients and registration.



Phaser 6200 vs. Lexmark C750



Phaser® 6200

The Phaser 6200 offers more value, performance, and color expertise

	Xerox Phaser 6200	Lexmark C750	The Xerox Advantage
PRICE US (ERP/Web)	\$1,999 (B) / \$2,299 (N) / \$2,499 (DP) / \$3,899 (DX)	\$2,089 / \$2,399 (n) / \$2,619 (dn) / \$3,019 (dtn)	The Phaser 6200 has a lower acquisition cost and cost per print than the C750.
COLOR PERFORMANCE First Page Out Time	15 seconds	20 seconds	The typical office document is only 3-5 pages long. With such a quick first-page-out time , the Phaser 6200 will be done long before the C750.
Print Technology	Single-pass Color Laser	Single-pass Color Laser	Xerox's new paper pick mechanism has the lowest paper jam rate in the industry...ever.
Processor	500 MHz PowerPC	350 MHz	The Phaser 6200's PowerPC processor is faster and more efficient . Its Page Pipelining feature also allows the 6200 to process and print multiple files at one time so they're out of the printer faster.
Hard Drive	10+ GB optional (standard on DX model)	5+ GB optional on all models	A larger hard drive allows the 6200 to perform more tasks at once , such as job pipelining and collation.
COLOR QUALITY Maximum Resolution	1200 x 1200 dpi	1200 x 1200 dpi	The 6200's oil-less chemical toner adheres to the surface of the page, thus increasing the intensity of the color on the page.
Color Controls	TekColor™ and Automatic Color Correction, ColorSync, ICC profiles	Automatic Color Control, ColorSync, ICC profiles	More color correction options add flexibility for more true, accurate color .
PAPER HANDLING Media Weights	60 to 150 gsm main tray / 60 to 216 gsm MPF	60 to 90 gsm main tray / 60 to 163 gsm MPF	CCT (Constant Current Transfer) technology prints on a wider variety of media while still ensuring the best quality.
NETWORK & SOFTWARE FEATURES Language support	True Adobe® PostScript® 3™, PCL5c emulation	PostScript Level 3 and PCL6 emulation	True Adobe PostScript 3 allows for fewer errors across platforms and faster speeds than emulations when printing PostScript or PDF files.
Printer Management Software	CentreWare Web, CentreWare IS Embedded Web Server, job accounting, e-mail notification, Usage Analysis Tool	MarkVision	CentreWare is far more feature-rich than MarkVision. Xerox is one of the only manufacturers to offer job accounting built in to the printer.
OTHER FEATURES Warranty	One Year on-site	One Year on-site	Xerox offers the 3-year Total Satisfaction Guarantee

Prices and specifications are subject to change without notice.



Copyright © 2002 XEROX CORPORATION. All rights reserved. Contents of this publication may not be reproduced in any form without permission of XEROX CORPORATION. Xerox®, The Document Company®, the digital X®, Phaser®, CentreWare®, PhaserSMART™ and TekColor™ are trademarks of XEROX CORPORATION. Tektronix® is a registered trademark of Tektronix, Inc. licensed to XEROX CORPORATION. All other trademarks are the property of their respective manufacturers.

62XCC-03UC

www.xerox.com/officeprinting