



TEKTRONIX PHASER® 7700
COLOR PRINTER BY XEROX
EVALUATOR GUIDE



XEROX
NETWORK PRINTERS

www.xerox.com/officeprinting



77XEG-01UA

ABOUT THIS GUIDE

This guide will introduce you to the Tektronix Phaser 7700 Color Printer by Xerox, and help you in your printer evaluation process.

CONTENT

Section 1 - Introducing the Tektronix Phaser 7700 Color Laser Printer by Xerox	4
Configurations	6
Feature overview	8
Section 2 - Evaluating Color Laser Printers	10
Suggests specific features to look for in a printer of this class, how to evaluate that feature, and how the Phaser 7700 measures up.	
Print quality and color accuracy	10
Print speed	13
Media format and versatility	14
Reliability	15
Ease of use	16
Cost of ownership	20
Section 3 - Configurations, Specifications, Part Numbers, etc.	21
Competitive comparisons	21
Configuration summary	23
Supplies and accessories	24
Total Satisfaction Services	25
Specifications	26
Printer set-up guide	29
Information sources	31

This guide was printed entirely on a Tektronix Phaser 7700 Color Printer by Xerox.

SECTION 1 – INTRODUCING THE TEKTRONIX PHASER 7700 COLOR LASER PRINTER BY XEROX



The Phaser 7700 is the Premier Tabloid (11 x 17 in.) Color Printer for today's demanding professionals. Combining the highest print quality **and** highest print speed of any printer in this class, the Phaser 7700 sets new standards for quality, performance and versatility.

The Phaser 780 and Phaser 790 clearly established Xerox in the leadership position for **superior image quality**. Similarly, the Phaser 840, 850, 860, 1235, and 2135 have proven that **single pass technology** can reliably provide the high speeds necessary for today's business users.

Now, the revolutionary Phaser 7700 is the first color printer that addresses the requirements of **both** superior image quality and high speed in **one** printer.

EXCEPTIONAL COLOR QUALITY

The Phaser 7700 combines 1200 dpi resolution for crisp text and fine lines, with photo mode to give continuous tone, photographic quality printing with brilliant results.

Unmatched color confidence is provided by these industry leading color technologies:

- TekColor Dynamic Color Correction
- ColorSync™
- Adobe Postscript Level 3
- Pantone Approved
- sRGB color matching
- ICC/ICM support

In addition, the acclaimed PhaserMatch™ ICC Color Management software has been optimized for the Phaser 7700 and included in the GX configuration. (optional in the DN and DX)

OUTSTANDING COLOR PERFORMANCE

At 22 ppm, the Phaser 7700 is over three times faster than competitive A3, four pass color laser printers. Combine that with a fast first-page-out time of less than 13 seconds, a high-speed G4 processor (500 MHz), a monthly duty cycle of up to 100,000 pages, and the Phaser 7700 is an assured productivity asset.

VERSATILITY/FLEXIBILITY

- Paper handling up to 12 x 18 in. Tabloid Extra
- Media weights up to 80 lb. cover or 220 gsm
- Up to 3150 sheet input capacity
- Finishing capabilities including stapling and offset catch tray
- Fully network ready with 10/100Base-TX Ethernet, USB, and bi-directional Parallel connectivity
- CentreWare™ Printer Management, scalable to meet a variety of needs
- Intelligent Ready provides for energy conservation without delaying productivity
- PrintingScout instantly displays pop-up Help if attention is needed
- Automatic two-sided printing in all models
- PhaserSMART™ for extensive online interactive support
- WorkSet™ productivity features



PRODUCT OVERVIEW

COMMON FEATURES

*All three Phaser 7700 configurations come packed with the following performance and productivity features **standard**:*

- 22 ppm color and black & white
- 1200 dpi standard mode
- Photo mode with continuous tone detail
- 500 MHz G4 class processor
- 650 sheet input capacity (500 sheet universal tray plus 150 sheet Multi-purpose tray)
- Adobe® Postscript® 3
- 10/100Base-TX Ethernet, USB, bi-directional Parallel connectivity
- 5 GB Internal Hard Drive
- Automatic two-sided printing
- Offset Catch Tray
- Automatic Color Correction
- CentreWare Internet Services — Embedded Web Server
- PhaserSMART automated troubleshooting
- WorkSet productivity features



PHASER 7700DN FEATURE SET

The Phaser 7700DN comes with 128 MB of memory (expandable to 512 MB) and all the common performance and productivity features listed above.



PHASER 7700GX FEATURE SET

Optimized for the image intensive/graphics customer, the Phaser 7700GX comes with all the common performance and productivity features of the Phaser 7700DN, *plus*:

- Lower Tray Deck consisting of three additional 500 sheet universal input trays (for a total of 2150 sheets)
- PhaserMatch™ ICC 7700 Color Matching Software for consistently predictable and reproducible color matching between the Phaser 7700 and any other target output device
- 256 MB of memory (expandable to 512 MB)



PHASER 7700DX FEATURE SET

Optimized for the performance/production oriented customer, the Phaser 7700DX comes with all the common performance and productivity features of the Phaser 7700DN *plus*:

- 2500 sheet High Capacity Feeder (for a total of 3150 sheets)
- 1000 sheet finisher (stacker/stapler)
- 256 MB of memory (expandable to 512 MB)

PRINTER MANAGEMENT SOFTWARE

Extensive web based printer management tools are common on the Phaser 7700 configurations including:



- CentreWare™ Web Printer Management (Win 2K, NT) for large networks
- CentreWare™ Printer Management Suite (DP, MMC, IS, UNIX/Linux, Tivoli NetView, HP OpenView, CA Unicenter)
- CentreWare™ Internet Services — Embedded Web Server
- PrinterMap
- Xerox NDPS Gateway
- Multiple Printer Installation Tool
- MaiLinX™

FEATURE OVERVIEW

Performance

- 22 ppm
- First-page-out time less than 13 seconds (less than 10 seconds monochrome)

Additional Software Features

- TekColor Dynamic Color Correction
- ColorSync
- Pantone Approved solid-color simulation
- sRGB color matching
- ICC/ICM support
- PhaserMatch™ ICC 7700 Color Management
- PhaserSMART™
- PrintingScout

Memory

- 128 MB standard in the DN model (expandable to 512 MB)
- 256 MB standard in the DX and GX models (expandable to 512 MB)
- 5 GB internal hard drive standard on all models

Supported Printer Personalities

- Adobe Postscript 3
- PCL5C emulation
- Automatic language switching

Fonts

- 136 Resident PostScript fonts, and 45 PCL

Paper Handling (Input)

- 500 sheet Universal Input Tray (all models)
- 150 sheet Multi-purpose Tray (all models)
- Optional Lower Tray Deck (standard on GX model) provides 3 additional 500 sheet Universal Input Trays (for total input capacity of 2150 sheets)
- Optional High Capacity Feeder (standard on DX model) provides one additional 500 sheet Universal Input Tray, and two letter size trays totaling 2000 sheets (for total input capacity of 3150 sheets)

Paper Handling (Output)

- 400 sheet face down offset catch tray (all models)
- Optional 1000 sheet finisher (stapler/stacker) (standard on DX model)

Duplex Printing

- Automatic duplexing standard in all configurations for all paper sizes supported by trays 1 - 4
- Heavier media can be manually duplexed using the Multi-purpose tray

Connectivity

- 10/100Base-TX Ethernet, USB and bi-directional Parallel standard on all models

Options

- 2500 sheet High Capacity Feeder (optional on DN, standard on DX)
- 1500 sheet Lower Tray Deck (optional on DN, standard on GX)
- Finisher/Stapler (optional on DN and GX, standard on DX. DN requires LTD or HCF for this option)
- PhaserMatch ICC 7700 (optional on DN and DX, standard on GX)

Environmental

- Intelligent Ready energy saving feature
- Energy Star Certification
- High Capacity consumables minimize packaging waste

SECTION 2 – EVALUATING COLOR LASER PRINTERS

Tabloid (11 x 17 in.) color laser printers are opening up a wide range of creative possibilities for color professionals. Prints that once had to be outsourced to a costly service bureau can now be produced inexpensively, at the touch of a button. But evaluating a tabloid color printer can be a formidable task. There are several models on the market boasting numerous features. Based on over 15 years of research and experience with the real-world needs of color printer users, the Xerox Office Printing Business has identified some key issues for you to consider as you undertake your own tabloid color printer evaluation.

Research consistently shows the top concerns of tabloid color printer purchasers are:

- Print Quality and Color Accuracy
- Print Speed
- Media Format and Versatility
- Reliability
- Ease of Use

This section of the Evaluation Guide will look at each of these areas, suggest ways you can evaluate a printer's performance against that requirement, and explain how the Phaser 7700 exceeds the expectations of tabloid color printer users on all counts.

PRINT QUALITY AND COLOR ACCURACY



Color users include designers, creative artists, photographers, marketing departments, desktop users, quick printers, anyone with a need to communicate in color. Their needs can vary from simple single pages, to brochures and multiple section documents. Increasingly today, Web design is also a common use.

Print quality is actually the sum of many factors that go into faithfully reproducing the image on your screen to the media you choose to print on — and being able to do that consistently page after page.

Look for color consistency.

Look for uniformity and consistency in large areas of solid fills. Check for smooth transitions where edges meet. Check that the image quality and color remains consistent page after page, particularly after 100 or 200 prints of the same image. Does the printer perform periodic automatic calibration to maintain print to print consistency?

Include a variety of elements in your test pages.

Try color graphics, photo images, adjacent primary colors, large areas of solid color, and text in various typefaces, sizes and colors.

Use a variety of media types.

Many color printers are surprisingly sensitive to the type of paper or other media used. In addition to plain paper (including the common copier paper so often found in offices), also test papers with different colors, textures, or sizes, including gloss, bond, recycled, and newsprint, to see if the colors change or the quality is degraded.

Check source file and platform compatibility.

Can the printer handle all the versions of PCL or Adobe® PostScript® that the software might produce? Some popular graphic applications, such as Adobe® Photoshop® or Adobe® Illustrator®, depend on true PostScript compatibility for the best color quality and most accurate proofing capability.

Test all the types of documents likely to be printed.

In addition to graphic applications, the color intensive office user's applications include presentations, reports, proposals, spreadsheets with highlight color, selling tools, ad comps and brochure layouts.

Consider the range of color-matching capability.

Look at the depth and breadth of color-matching capability — is the printer compatible with the most common industry standards, assuring you of image fidelity from screen to print? Look at the ability to match color from different devices, i.e. copier, digital press, printing press or web pages. Look for the ability to control the consistency of the print engine to give repeatable results.

✓ HOW THE PHASER 7700 MEETS THE QUALITY AND ACCURACY REQUIREMENT:

Color quality is more than counting dots on a page. The Phaser 7700 leverages over 15 years of color expertise, blending the best technologies from the Phaser 780 and 790 to provide the user with the confidence of the high dpi number as well as the superior appearance of the continuous tone from bit depth.

Now in **one** printer.

Image intense/graphics users have all the confidence of the industry leading color technologies available to them including:



- TekColor™ Dynamic Color Correction
- ColorSync
- Adobe Postscript Level 3
- Pantone Approved
- sRGB color matching
- ICC/ICM support

PHASERMATCH™ 7700

Color matching from concept to reality can be a weighty balancing act. But PhaserMatch™ ICC 7700 from Xerox brings stability to the process, delivering consistent, predictable, and reproducible color matching between your Phaser 7700 color printer and any other CMYK output device.

Standard choices for color matching such as Automatic, EuroScale, Commercial Press, and sRGB provide good results but are based on averages and assume plain white paper stock. They don't account for individual user matching requirements or different papers.

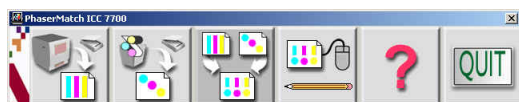
PhaserMatch™ ICC 7700 addresses a wide range of user needs to control color beyond the standard settings. Fully featured, yet easy to use, PhaserMatch™ ICC 7700 lets the user alter the colors printed on the Phaser 7700 Color Printer to more closely match the colors produced on their output device of choice, and even on their paper stock of choice. Linked profiles can then be edited to fine-tune the match even more.

Use PhaserMatch ICC 7700 software to:

- gain control over color — and save time and money
- get greater color accuracy for design comps and prepress proofs
- reduce iterations and ensure digital proofs meet press color expectations

With PhaserMatch ICC 7700 software, you can build custom color profiles that are specific to a particular printing press or other output device. These profiles can be stored and used repeatedly.

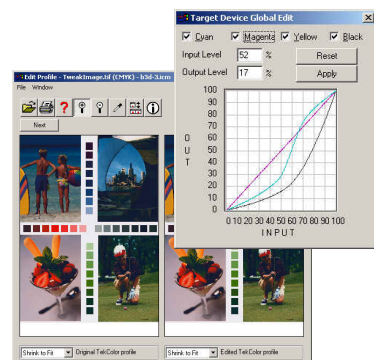
Get it Right the First Time



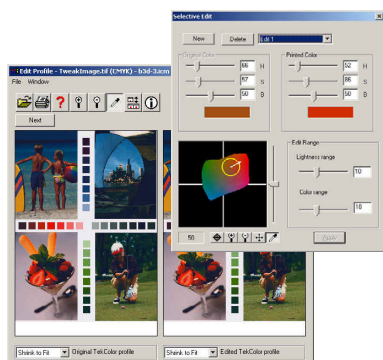
PhaserMatch ICC 7700 can emulate any target device by linking its ICC profile to the Xerox printer profile. New ICC profiles can be created automatically and edited for fine-tuning. Choose from a wide range of device link profiles for U.S. and European color standards.

PhaserMatch ICC 7700 software gives you the ability to input the distinctive color characteristics of industry standard printing presses or other standard proofing systems and simulate them on your Phaser 7700 printer, so that the colors on your proof match the colors on your press.

Customize it Right



Modify and fine-tune a device link profile for your unique printing needs. Using PhaserMatch ICC 7700 software, you can manipulate the tone reproduction curves (toner levels) to capture the individual range of color reproduction of your target printing device. Xerox provides an easy graphical interface, which allows you to add or delete adjustable points and drag the curves to the desired value. The on-screen preview lets you see the changes on your monitor as you fine-tune the color profile. Simple selections help you pick a target profile, a printer profile, and the link options desired. The linked profile is then saved to use again.



Print it Right Every Time

Once a custom profile is created, PhaserMatch ICC 7700 software makes working with color transparent and automatic to all users. PhaserMatch ICC 7700 software automatically updates your print driver with the device link profiles you create. The next time you print, just select the profile you'd like from the color corrections menu in the print dialog box. Simple screen displays help users edit entire profiles or tweak selected colors to fine tune the match to their desired output device.

PRINT SPEED

It is no longer acceptable to provide exceptional color print quality at the expense of user productivity; the two must go together. A color printer must be able to handle a wide variety of documents quickly and reliably. A color printer must keep up with the performance demands of a shared network environment.

Measure overall performance.

To accurately measure overall performance in a real workgroup environment, send a mix of black-and-white and color documents of different length and complexity to the printer over a standard Ethernet network. This combines the network transmission time, first-page-out time, and multi-copy engine speed to paint a clear picture of actual overall performance.

Calculate print job throughput.

Print job throughput is the time it takes from clicking the print button on your computer screen to the final delivery of the color document to the output tray, sometimes called **click-to-clunk**. Raw print speed is only a part of the total print time; image processing speed, particularly of large, complex images, can be even more important to maximizing throughput. Test for large, complex images.

Consider color print speed.

Since color printing, rather than black-and-white printing, is the primary use of most color printers, it makes sense to pay attention to the color print speed. Start with the rated engine speed, but be sure to investigate the total color and black & white **throughput**, including image processing speed and first page out time.

✓ HOW THE PHASER 7700 MEETS THE SPEED REQUIREMENT:

Traditionally, there was a trade-off between image quality and print speed. But the Phaser 7700, at 22 ppm is over three times faster than competitive A3, four pass color laser printers while maintaining the highest image quality.

With over 15 years of color printing experience we have evolved the fastest RIP in the industry, giving us a first-page-out time of less than 13 seconds for letter-size color, less than 10 seconds for black & white.

The resulting productivity means your prints are finished while competitors are still processing.

MEDIA FORMAT AND VERSATILITY

Consider Media Weights and Sizes

Consider the type and variety of media your organization would expect the printer to print on. Obviously a tabloid printer must print on 11 x 17 in. size but will it accept larger media to allow for full bleeds? Will the printer support a variety of sizes automatically from the input trays? Does the printer accept envelopes in multiple sizes? How broad is the media weight range? Will the printer support automatic two-sided printing?

Consider Versatility

Does the printer have high volume input capacity to support large uninterrupted print jobs? Is the input capacity divided to allow for a variety of media selections? What are the finishing options: does the printer separate jobs? Does it staple multi-page jobs?

HOW THE PHASER 7700 MEETS THE MEDIA AND FLEXIBILITY REQUIREMENT:

The Phaser 7700 can handle media sizes ranging from A6 (105 x 148 mm) or US Postcard (4 x 6 in.), to SRA3* (320 x 450 mm) or Tabloid Extra (12 x 18 in.). Media weights can vary from 64 gsm (17 lb. bond) to a maximum of 220 gsm (58 lb. bond, 80 lb. cover stock, or 110 lb. index). This is especially important to designers trying to match the stock for comps to the finished piece.

An input capacity of up to 3150 sheets and an output capacity of 1400 sheets (DX configuration) assures the productivity oriented user of more uninterrupted printing.

*Print quality outside maximum printable area is not guaranteed

PRINTER RELIABILITY

Consider both short- and long-term reliability.

Few problems can ruin an office's productivity faster than a printer that won't print. Obviously, the tests we've recommended can help reveal a printer's reliability in the short term.

For estimating long-term reliability, start with the type and length of the warranty. Also, a color printer's reliability tends to correlate closely with both the simplicity and the ruggedness of its design. Also consider access to the paper path and to customer replaceable parts. What is the recommended and maximum duty cycle?

Finally, consider the manufacturer's color printing expertise — the depth and breadth of experience with color printing technologies — as another good indicator of long-term color printer performance.

HOW THE PHASER 7700 MEETS THE RELIABILITY REQUIREMENT:

The Phaser 7700 combines over 15 years of Tektronix color printing expertise with the strength and experience in document handling of Xerox to provide the robust productivity that you've come to expect from these two technology leaders.

The Phaser 7700 can handle very high monthly duty cycles up to 100,000 prints. And like all Xerox Network Printers, the Phaser 7700 is covered by a 1 year on-site warranty and the Xerox Total Satisfaction Guarantee.



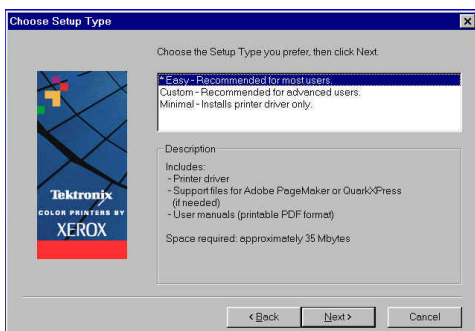
With the Phaser 7700, Xerox introduces PhaserSmart™, an automated, internet-based, support and service delivery tool for customers using Xerox Network printers. This tool leverages information from the user's printer to diagnose and deliver customer self support solutions. Available 24/7, support for your printer is only a mouse click away.

EASE OF USE

The best way to evaluate a printer's ease of use is to use it in a real environment over an extended period of time. But even without that opportunity, the following questions can help uncover a printer's true start-up and day-to-day productivity potential:

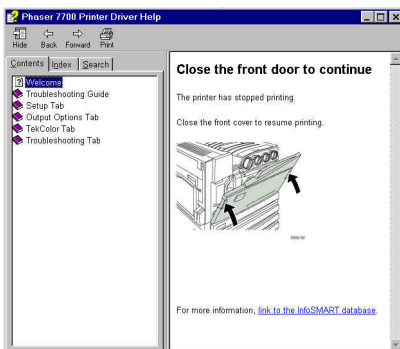
- How many consumables are there and how difficult is it to replace them? Can you easily reach all areas of a printer? Some printers require you access the rear of the printer to replace a consumable.
- Is it easy to check the consumable status before committing to a large or important print job?
- Also, consider what tools are provided to help manage multiple printers in a network.
- How easy is it to learn to use and manage? Does it offer easy control both over the network and from its front panel?

✓ HOW THE PHASER 7700 MEETS THE EASE OF USE REQUIREMENT:



INSTALLATION

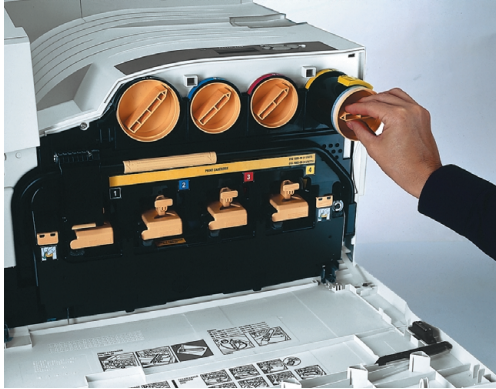
Xerox network printers have ingeniously simplified the installation process so you don't have to be a network genius to get your new printer up and running. This includes automatically assigning the printer's IP address and identifying the printer's set of features. No installation CD? No problem. The same auto installation process can be initiated from the Web, or the hard drive.



OPERATION

When you send a document to a Xerox network printer, our **PrintingScout** will instantly alert you on-screen if the printer needs attention and provide helpful text and graphics about how to fix it. This way, you'll go to the printer completely prepared - no surprises. And no other printer on the market can do this.

What would be better than knowing if your printer needs help before you print? How about avoiding the problem altogether. **MaiLinX** can automatically send an e-mail to an administrative assistant when a printer needs supplies or maintenance. So the printer is always ready.

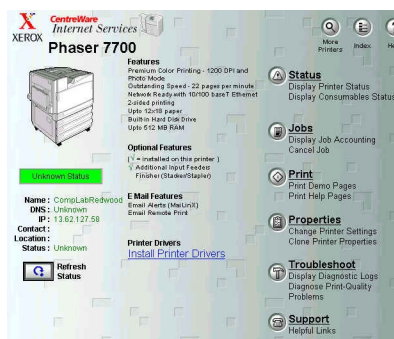


Loading toners is a clean and simple process, easily done from the front of the printer.

The large high-contrast front panel display is simple and intuitive, and it's backlit for comfortable viewing. A list of help topics is available at the main menu. Pressing the **i** button pops up a contextual help message to explain whatever menu function or message is being displayed.



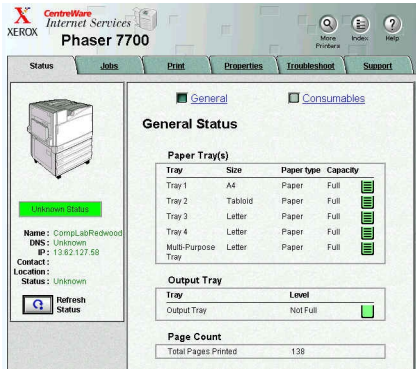
NETWORK PRINTER MANAGEMENT



CENTREWARE® INTERNET SERVICES

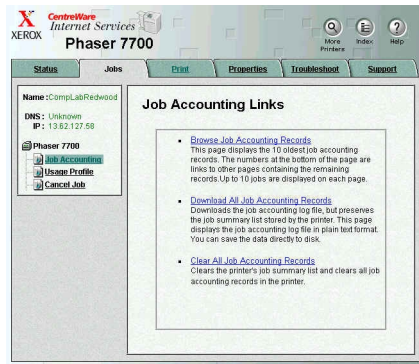
Xerox is the leader in embedded Web server technology. We've been including Web servers on our printers for over six years, five years longer than our closest competitor. This means Xerox network printers will give you the most robust set of intelligent features on the market. Just pull up the printer's **CentreWare® Internet Services** site on your favorite Web browser and easily find all you need to know about it - current status, user manuals, troubleshooting guides, software drivers, and hot links to Xerox product information, software updates, and support resources. It is a simplified, high-level tool for managing one device at a time. Plus, network administrators can easily monitor, configure, and troubleshoot the printer right from

their desktop - keeping the printer and its users running at full speed. It can also discover all of your networked printers and multifunction devices, regardless of manufacturer. You can then see their status and do simple network troubleshooting.



Status

Displays information on input and output trays, capacities, page count, and consumables information. Provides optional link to a supplies ordering site.

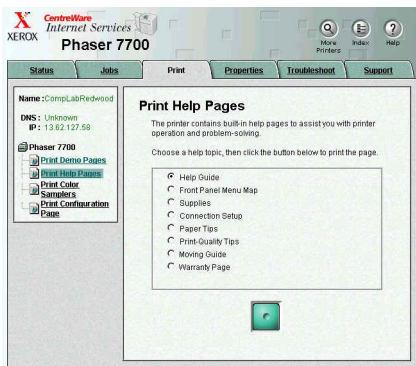


Jobs

Job Accounting provides links to browse, download, or clear Job Accounting Records.

Usage Profile reports provide information on many aspects of printer usage, such as ink or toner used, number of pages printed, and paper types used, gathered during the life of the printer. From this page you can view or print a report, and also send it to an email address you enter below, or to users who are specified in the Usage Profile Properties page.

Cancel Job clears the current print job.

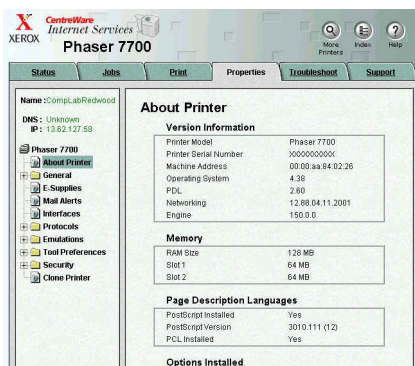


Print

Print Demo Pages prints the demo pages that exhibit the printer's various capabilities for reproducing graphics, business charts and graphs, and 2-sided printing.

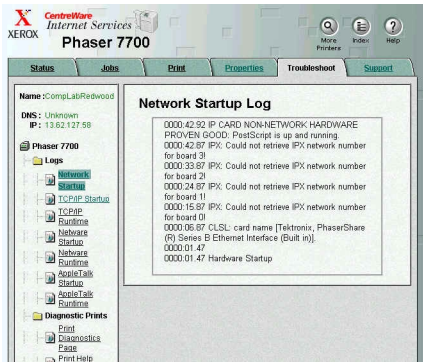
Print Help Pages prints the internal help pages on topics selected including; Front Panel Menu Map, Supplies, Connection Setup, Paper Tips, Print Quality Tips, Moving Guide, and Warranty Page. *Print Color Samplers* (for both CMYK, and RGB) helps users set or match specific colors, by showing what colors you get for different color values. This is useful for matching specific colors, hues, and gradients for graphic arts and office applications.

Print Configuration Page provides general information on the printer, network connectivity and interfaces.



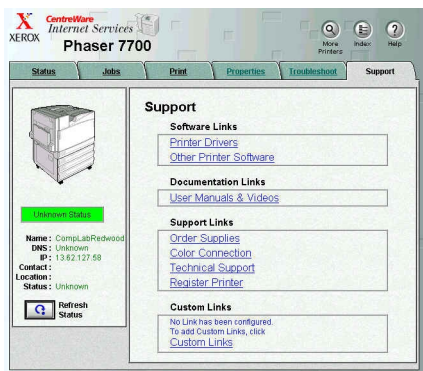
Properties

Provides a wealth of information on general printer settings, protocols, emulations, tool preferences, and security. Primarily used by Network Administrators to configure printers.



Troubleshooting

Provides access to the printer's network logs and diagnostic tools.



Support

Provides links to printer drivers and other software, user manuals and videos, support links, and a user customizable link.

Clicking on Terminal Support launches PhaserSMART, the new automated troubleshooting feature.

CENTREWARE WEB PRINTER MANAGEMENT



CentreWare Web is the newest printer management tool in the CentreWare family. CentreWare Web is designed to provide enterprise management solutions for **all** devices connected to your network – not just Xerox. Install, troubleshoot, configure, and produce asset reports for all of your devices. Simply install CentreWare Web on MS Windows 2000 or NT 4 servers and gain access from anywhere on your network through any standard web browser.

Key Advantages:

- When the system administrator enters the tool they will automatically see all of the printers in **error** state rather than searching for them – saves time.
- Conduct installation, configuration, and troubleshooting on up to 25 printers simultaneously – saves time.
- Install, configure, troubleshoot, and generate reports for all products, Xerox as well as others, with this tool so that you only need one tool for all of your management needs.
- Clone printer configurations to other printers rather than taking the time to set up the printer configurations one at a time.
- Produce asset reports, error history reports, status reports, and accounting reports from all of your devices and have them e-mailed to key recipients.
- Intuitive **Wizards** will guide you through tasks such as upgrading printer firmware, cloning device configurations, installing multiple printers, and other tasks to save time and make seldom conducted tasks easier.

COST OF OWNERSHIP

A customer's first concern is often the initial purchase price of a color printer. But the cost of supplies and the cost of the time spent tending to the printer may have a far larger impact on the total cost of ownership.

HOW THE PHASER 7700 MEETS THE COST OF OWNERSHIP REQUIREMENT:

The Phaser 7700 produces near photo quality color prints at an average cost of under 10 cents for color and under 2 cents for black and white. Bringing color printing in-house saves time and money, and the extensive suite of color tools in the Phaser 7700 helps to **get it right** the first time, avoiding multiple reprints.

With the fast first-page-out time of 13 seconds in color and a print speed of 22 ppm there is no costly wasted time waiting around for the printer to deliver. Also note that the Phaser 7700 is capable of producing up to 100,000 color prints per month. This is a rating that is nearly twice the duty cycle of its four-pass color laser competition. This level of productivity goes straight to the bottom line.

SECTION 3 – CONFIGURATIONS, SPECIFICATIONS, ACCESSORIES AND SUPPLIES, ETC.




COMPETITIVE COMPARISONS

		Phaser 7700 Color Printer	HP Color LaserJet 8550	QMS 6100	Canon imageCLASS 2100
COLOR PERFORMANCE	Speed	22 ppm color 22 ppm black	6 ppm color 24 ppm black	6 ppm color 24 ppm black	6 ppm color 24 ppm black
	First Page Out (color/black)	13/10 seconds	53/38 seconds	No data	34.5/19.5 seconds
	Technology	Single-pass Color Laser	Color Laser	Color Laser	Color Laser
	Processor	500 MHz G4-class	200 MHz, 300 MHz on GN model	200 MHz	133 MHz
	Language Support	Adobe PostScript 3, PCL 5C	PostScript Level 3, HP PCL 5ec, enhanced PDF	PostScript 2, PCL 6, HP GL	Adobe PostScript 3, PCL 5ec emulation
	Memory	Standard - 128 MB Maximum - 512 MB	Standard - 128 MB Maximum - 512 MB	Standard - 64 MB Maximum - 384 MB	Standard - 64 MB Maximum - 256 MB
	Hard Disk	5 GB standard	3.2 GB	2.2 GB	2.1 GB
	Monthly Volume	100,000/month	60,000/month	18,750/month	60,000/month
COLOR QUALITY	Resolution (dpi)	600 x 1200, 600 x 600 photo-quality mode	600 x 600 with ImageREt 2400	1200 x 1200, 600 x 600	600 x 600
	Color Matching	Pantone, ColorSync, ICC, ICM, SWOP, EuroScale, Custom ICC, Automatic	Pantone, ICC, ICM, ColorSync, SWOP, EuroScale, custom ICC profile support	Pantone, ICC, ICM, Colorific, ColorSync, SWOP	Pantone, ICC, ICM, ColorSync, SWOP, EuroScale
	Professional Color Management Support	PhaserMatch ICC 7700 Color Management software	None	Color Encore (optional)	None
PAPER HANDLING	Two-sided Printing	Standard on all models	GN model only	Yes	optional
	Paper Size (max)	12 x 18 in.	12 x 18.5 in.	13 x 19 in.	12 x 18.5 in.
	Media Weights (lb./gsm)	16 lb. bond to 80 lb. cover /60 to 220 gsm	16 lb. bond to 60 lb. cover /60 to 163 gsm	16 lb. bond to 60 lb. cover/60 to 163 gsm	16 lb. bond to 50 lb. cover/60 to 135 gsm
	Standard Paper Input (No. trays/total)	2/650 sheets	2/600 sheets	1/250 sheets	3/1100 sheets
	Optional Paper Tray Capacity (No. trays/total)	3/1,500 sheets or 2,500-sheet high capacity feeder	2/2,500 sheets	3/1,250 sheets	1,000-sheet, or 2000-sheet paper deck
	Max. Paper Capacity	3,150 sheets	3,100 sheets	1,250 sheets	3,100 sheets
	Finishing Capabilities	1,000-sheet stacker /stapler	None	None	7-bin sorter

COMPETITIVE COMPARISONS, CONT'D.

		Phaser 7700 Color Printer	HP Color LaserJet 8550	QMS 6100	Canon imageCLASS 2100
NETWORKING	Network Connectivity	Standard on all models: 10/100Base-TX Ethernet, bi-directional Parallel, USB	Standard: Parallel, 10/100Base-TX Ethernet (on N/DN models only)	Standard: 10/100Base-TX Ethernet, bi-directional Parallel Optional: Token-Ring, LocalTalk	Standard: 10/100Base-TX Ethernet, Parallel
	Browser-based Printer Management	CentreWare Web Printer Administration, CentreWare IS Embedded Web Server (no additional installation required)	HP WebJet Admin	Crownview	Device Management Software, Fiery Webtools, Web Downloader, WebStatus, WebLink, WebSpooler
	Remote Usage	Job accounting, status notification, and complete usage analysis tool	Some consumable status	None	Canon NetSpot Remote
OTHER FEATURES	Proactive Help Tools	PrintingScout: Immediate problem notification and solution suggestions	None	None	None
	Online Troubleshooting Help	PhaserSMART Web-based troubleshooting database	None	None	None
	Warranty	1 year on-site + option to extend (includes Xerox Total Satisfaction Guarantee)	1 year on-site + option to extend	1 year on-site + option to extend	1 year on-site

PHASER 7700 CONFIGURATION SUMMARY

Feature	Phaser 7700DN	Phaser 7700GX	Phaser 7700DX
			
Print Speed	22 ppm in both Color and Black & White		
First Page Out time	<13 seconds color / <10 seconds black & white		
Maximum Resolution	600 x 1200 dpi and Photo mode		
Processor	500 MHz G4		
Connectivity	10/100Base-TX Ethernet, USB, bi-directional Parallel		
Automatic two-sided printing	Standard		
Internal Hard Disk	Standard		
WorkSet Features	Offset Catch Tray, Job Pipelining, Proof Print, Secure Print, Job Collation, Save Print, Remote Print, e-mail Alerts, Separator Page, N-up Printing, Booklet Printing, Watermark, Fax Friendly Black.		
Web-based printer management	CentreWare™ Web for enterprise wide printer administration CentreWare™ IS Embedded Web Server for individual printer support		
Resident Fonts	136 Post Script fonts, 45 PCL		
Memory	128 MB (expandable to 512 MB)	256 MB (expandable to 512 MB)	
2500 sheet High Capacity Feeder	Optional	NA	Standard
1500 Sheet Lower Tray Deck	Optional	Standard	NA
Finisher/stapler	Optional	Optional	Standard
PhaserMatch ICC 7700	Optional	Standard	Optional

SUPPLIES AND ACCESSORIES

Description	Details	Part Number	
Toner cartridges	Color: Black Cyan Magenta Yellow	High Capacity*	Standard Capacity**
		016-1947-00 016-1944-00 016-1945-00 016-1946-00	016-1882-00 016-1879-00 016-1880-00 016-1881-00
		*Average life of each high capacity toner cartridge is 10,000 images CMY, 12,000 images Black at 5% coverage per color. **Average life of each standard capacity toner cartridge is 4,000 images CMY, 5,000 images Black at 5% coverage per color.	
Premium Color Printing Paper	24 lb. bond, 500 sheets A/Letter (8.5 x 11 in.) A4 (210 x 297 mm) 11 x 17 in. A3 (297 x 420 mm) Tabloid Extra (12 x 18 in.)	016-1368-00 016-1369-00 016-1699-00 016-1700-00 016-1900-00	
Phaser 7700 Premium Transparency	50 sheets A/Letter (8.5 x 11 in.) A4 (210 x 297 mm)	016-1950-00 016-1951-00	
Premium Cover Paper,	60 lb., 100 sheets A/Letter (8.5 x 11 in.) A4 (210 x 297 mm)	016-1823-00 016-1824-00	
Premium Coated Cover Paper,	80 lb., 100 sheets Tabloid (11 x 17 in.) A3 (297 x 420 mm) 80 lb., 250 sheets Tabloid Extra (12 x 18 in.)	016-1963-00 016-1964-00 016-1788-00	
Glossy Coated Paper	100 lb., 100 sheets A size (8.5 x 11 in.) A4 (210 x 297 mm) 100 lb., 50 sheets Tabloid (11 x 17 in.) A3 (297 x 420 mm) Tabloid Extra (12 x 18 in.)	016-1704-00 016-1705-00 016-1718-00 016-1719-00 016-1940-00	
Graphics Imaging Paper	80 lb. Cover, 50 sheets Tabloid Extra (12 x 18 in.)	016-1958-00	
Newsprint Proofing Paper	50 lb., 250 sheets Tabloid Extra (12 x 18 in.)	016-1960-00	
Color Laser Labels	100 sheets A size (8.5 x 11 in.), 30 per sheet A4 (210 x 297 mm), 14 per sheet, A size (8.5 x 11 in.), 6 per sheet, A4 (210 x 297 mm), 8 per sheet,	016-1695-00 016-1688-00 016-1696-00 016-1689-00	
Print Cartridge	24,000 print capacity	016-1886-00	
Print Cartridge Kit	Four imaging drums 24,000 print capacity each	016-1883-00	

SUPPLIES AND ACCESSORIES CONT'D

Description	Details	Part Number
Fuser	60,000 print capacity 110V 220V	016-1887-00 016-1888-00
Waste Toner Cartridge	6,000 print capacity	016-1891-00
Staple Pack	3 refills x 5,000 each	016-1971-00
Lower Tray Deck	3-500 sheet universal tray module	7700LTD/A
High Capacity Feeder	1-500 sheet universal tray and 2-A4 trays	7700HCF/A
Finisher (stacker/stapler)	1000 sheet finisher	7700FNS/A
Cart	With wheels and storage drawer	ZCARTC/A
Memory upgrade	128 MB 256 MB 512 MB	ZMC128/A ZMC256/A ZMC512/A
Transparency Pockets	50 sheets, A/Letter size	016-1194-00
Transparency Sleeves	50 sheets, A/Letter size 50 sheets, A4 size	016-1130-00 016-1131-00
PhaserMatch 7700	Color Management Software	7700PM/A

TOTAL SATISFACTION SERVICES™



All Phaser 7700 models come with a one-year on site warranty, extensive web-based technical support, and telephone technical support. In addition, this product is covered by the Xerox Total Satisfaction Guarantee. Optional service offerings, include:

Description	U.S. Part Number	Canadian Part Number
Extended On-Site Service (available during first 90 days of product ownership) 2 years	7700S3	7700S3C
Annual On-Site Service (available <i>after</i> the first 90 days of product ownership)	7700SA	7700SAC
Installation (training and driver installation for max of two computers)	COLBSO	COLBSOC
Help Desk Service Color Core Training Product Training for Phaser 7700 Annual Support Subscription	HDCCORE HD7700 HDYEAR	HDCCORE HD7700 HDYEAR

SPECIFICATIONS

PHYSICAL DIMENSIONS

Dimensions	Value
Height	19.4 in. (493 mm)
Width	25.4 in. (644 mm)
Depth	26.9 in. (682 mm)
Weight	180 lbs. (82 kg)

POWER

Function	Power Used
Warm-up	1000 Watts
Continuous Printing	220 to 600 Watts
Stand-by	130 Watts
Energy Star mode	45 Watts

PRINT QUALITY MODES

Mode	Description	Maximum Speed
Standard	General-purpose mode for color printing Produces vibrant prints with smooth color transitions Suitable for most office uses and images Prints at 600 x 1200 dpi	22 ppm Letter/A4-size Laser Paper 18 ppm Duplex 11 ppm Transparency
Photo	Highest-quality color prints Richest color and near-photographic detail Prints a continuous tone (multiple color densities per pixel) at 600 x 600 dpi	Up to 22 ppm Letter/A4-size Laser Paper

TEKCOLOR CORRECTIONS

Correction	Description
Automatic	Automatically applies the best color correction mode to each element on the page
None	No color correction made to colors Used with the PANTONE® Color Chart for PANTONE® Color matching and ICC Profiles
Vivid sRGB	Produces the brightest possible colors and makes blues appear less purple
sRGB Display	Closely approximates the colors on a standard display screen
SWOP Press	Specification for Web Offset Publications. Used to match U.S. press standards
Euroscale Press	Emulates the Euroscale 4-color process press mode
Commercial Press	Emulates a 4-color process commercial press
SNAP Press	Specifications for Non-heat Advertising Printing used to match standards for printing on uncoated and newsprint papers
DIC	Used to match Dai Nippon printing inks on coated paper
Toyo	Used to match commercial Toyo printing inks on coated paper
Black and White	Grayscale printing Used to print page masters for photocopying in black and white
FAX Friendly Black	Colors are converted to black and white patterns for photocopying or faxing

MEDIA WEIGHTS

Tray 1	16 lb. bond to 60 lb. cover (64-169 gsm)
Trays 2, 3, 4	16-28 lb. bond (64-105 gsm)
Multi-Purpose Tray	16 lb. bond to 80 lb. cover and 110 lb. index (64-220 gsm)
Duplex Module	20-28 lb. bond (75-105 gsm)
Finisher	16-28 lb. (64-105 gsm)

OFFICE LASER PAPER OR PREMIUM BOND PAPER

Paper Size	Universal Tray 1	Universal Trays 2- 4	Multi-Purpose Tray	High Capacity Feeder
Statement (5.5 x 8.5 in.)	✓	✓	✓	
Executive (7.25 x 10.5 in.)			✓	
8 x 10 in.	✓	✓	✓	
UK Foolscap (8 x 13 in.)			✓	
A/Letter (8.5 x 11 in.)	✓	✓	✓	✓
US Folio (8.5 x 13 in.)	✓		✓	
Legal (8.5 x 14 in.)			✓	
B/Tabloid (11 x 17 in.)	✓	✓	✓	
Tabloid Extra (12 x 18 in.)			✓	
A6 (105 x 148 mm)			✓	
A5 (148 x 210 mm)	✓	✓	✓	
A4 (210 x 297 mm)	✓	✓	✓	✓
A3 (297 x 420 mm)	✓	✓	✓	
SP Folio (215 x 315 mm)			✓	
Oficio (215 x 340 mm)			✓	
B6 JIS (128 x 182 mm)			✓	
B5 JIS (182 x 257 mm)	✓	✓	✓	✓
B4 JIS (257 x 364 mm)	✓	✓	✓	
RA3 (305 x 430 mm)			✓	
SRA3* (320 x 450 mm)			✓	

*Print quality outside maximum printable area is not guaranteed

PRINT AREA

Paper	Page size	Image area	Top /bottom margins	Side margins
Statement	5.5 x 8.5 in.	5.1 x 8.1 in.	.2 in.	.2 in.
Executive	7.25 x 10.5 in.	6.85 x 10.1 in.	.2 in.	.2 in.
8 x 10 in.	8 x 10 in.	7.6 x 9.6 in.	.2 in.	.2 in.
UK Foolscap	8 x 13 in.	7.6 x 12.6 in.	.2 in.	.2 in.
Letter	8.5 x 11 in. 215.9 x 279.4 mm	8.1 x 10.6 in. 205.9 x 269.4 mm	.2 in. 5 mm	.2 in. 5 mm
US Folio	8.5 x 13 in.	8.1 x 12.6 in.	.2 in.	.2 in.
Legal	8.5 x 14 in. 216 x 356 mm	8.1 x 13.6 in.	.2 in.	.2 in.
Tabloid	11 x 17 in. 279 x 432 mm	10.4 x 16.4 in. 269 x 432 mm	.2 in. 5 mm	.2 in. 5 mm
Tabloid Extra	12 x 18 in.	11.6 x 17.6 in.	.2 in.	.2 in.
US Postcard	4 x 6 in.	3.6 x 5.6 in.	.2 in.	.2 in.
A6	105 x 148 mm	95 x 138 mm	5 mm	5 mm
A5	148 x 210 mm 5.83 x 8.27 in.	138 x 200 mm 5.43 x 7.87 in.	5 mm .2 in.	5 mm .2 in.
A4	210 x 297 mm 8.3 x 11.7 in.	200 x 287 mm 7.9 x 11.3 in.	5 mm .2 in.	5 mm .2 in.
A3	297 x 420 mm 11.7 x 16.5 in.	287 x 410 mm 11.3 x 16.1 in.	5 mm .2 in.	5 mm .2 in.
SP Folio	215 x 315 mm	205 x 305 mm	5 mm	5mm
Oficio	215 x 340 mm	205 x 330 mm	5 mm	5 mm
B6 JIS	128 x 182 mm	118 x 172 mm	5 mm	5 mm
B5 JIS	182 x 257 mm	172 x 247 mm	5 mm	5 mm
B4 JIS	257 x 364 mm	247 x 354 mm	5 mm	5 mm
RA3	305 x 430 mm	297 x 420 mm	5 mm	4 mm
SRA3*	320 x 450 mm	303 x 404 mm	5 mm	8.5 mm

*Print quality outside maximum printable area is not guaranteed

SPECIALTY PAPER

Paper Type and Size	Tray 1	Trays 2- 4	Multi-Purpose Tray	High-Capacity Feeder
Phaser 7700 Premium Transparency	✓		✓	
Labels			✓	
Paper Envelopes			✓	

PHASER 7700 PRINTER SET-UP GUIDE

Setting up the printer is easy:

- Unpack the printer following the illustrated Getting Started Guide
- Load the toner cartridges supplied with the printer
- Load the paper tray(s)
- Connect a network cable and power supply
- Turn on the printer. Allow it to warm up; if completely cold this takes about 45 seconds
- Install the driver software. Load the driver software onto your host computers, using the Drivers and Utilities CD-ROM included with the printer, or directly from the internal hard drive.

INTELLIGENT READY

All new Phaser Color Printers now come with Intelligent Ready. There is no need to turn off the printer. Intelligent Ready software tracks when and how the printer is used. Tracking these patterns over a rolling 3 week period, the printer automatically places itself in a standby power-saving mode during periods of non-use. The printer will automatically return to its Ready mode, just prior to an expected use period, avoiding any warm-up time and minimizing power usage in periods of non-use.

INSTALLING DRIVER SOFTWARE

The Phaser 7700 Color Printer's Driver Installation process is designed to provide an easy and consistent installation process from all software sources, regardless of platform.

Features include:

- Automatic discovery of the printer on your network
- Automatic port creation
- Automatic printer *model* and feature detection
- Automatic driver installation
- Automatic IP address assignment

Install From the Web technology is used for distribution of software from any of the following sources:

- Product CD
- CentreWare IS Embedded Web Server
- Xerox Web Site www.xerox.com/officeprinting

STEP-BY-STEP (FOR WINDOWS INSTALLATION)

Install Printer Driver link launches the Setup program. Other links take users to Color Connection, Technical Support, Printer Registration, a Power Point Design Wizard, and User Manuals.

After the obligatory license acceptance, choose your installation type.

Easy setup is the default choice. It installs the driver and support for Adobe PageMaker or QuarkXPress (if needed), and User Manuals (in PDF). If any helper applications are not loaded (QuickTime, Acrobat Reader), you are notified and given the opportunity to install or not.

Once the setup options have been chosen, the installer searches for a printer. It looks on physical ports on the computer — LPT and USB — as well as on a network (if present) for TCP/IP printers.

If the printer is found on the network (already has an IP address), it highlights the printer and gives you the option to install this printer or a different one. It won't find the printer if it is on a different subnet. If this isn't the printer you want to install (when on a different subnet), select the **Choose the printer myself** option.

Once your printer selection has been made, you are presented with a default name (the name of the printer) for the printer. The name chosen in this dialog will be the name of the printer in the Printer's window.

After choosing the printer name, setup starts copying the files to your hard drive. PhaserPort (95/98) and LPR (NT4) port monitors are installed automatically during this stage of the installation. A port is also created with the correct IP address for the selected printer.

The automated installation process then identifies the feature set this printer is configured with (Additional Trays, Additional Memory, Hard Drive, etc.). This ensures that all features are readily available. After all selections and choices have been made, setup is complete.

Auto registration is run next.

INSTALL FROM WEB



Making a new network printer available to everyone on the network is as simple as sending an email with a link to the **Install from Web** feature. Users simply follow the link to the familiar next-next-next installation wizard and they're ready to print. In this way, IT departments allow greater connectivity without complexity.

INFORMATION SOURCES

You can press the **Information** key at any time to get additional information about the message displayed on the front panel.

Use the **Printable Pages** menu to print internal pages that give information about the printer configuration, supplies information, paper tips, etc.

The Printers CD-ROM contains:

- Read Me release notes
- Printer drivers
- Driver installers (for Mac and Windows)
- Phaser 7700 Color Printer User Guide
- Advanced Features and Troubleshooting Manual
- Illustrated Getting Started Guide
- How-to videos
- Networking information
- Cleaning instructions
- Consumables instructions
- Repacking instructions
- Adobe Acrobat Reader (for reading the PDF files)
- Adobe Type Manager (ATM)
- Print Quality Tips

Advanced Network Management Tools CD-ROM

This CD-ROM contains network management tools, including CentreWare™ DP, CentreWare™ Web Printer Management, Unix tools, and the Font Downloader application.

On the Web visit www.xerox.com/officeprinting for:

- Product, supplies, and service information
- Downloading printer drivers
- Finding your local reseller
- On-line documentation

Visit www.xerox.com/officeprinting/support for:

- Software and Drivers
- InfoSMART™ Knowledge Base
- Manuals and guides
- Job Request Status

Visit www.colorconnection.xerox.com for:

- Color resource for tools and information to help you get the most from your color printer
- Interactive tutorials and helpful tips for using your printer and favorite software applications
- Easy access to on-line technical support
- Customized features to meet your individual needs

QUESTIONS? COMMENTS? PROBLEMS?

If you have any questions or issues with your evaluation printer, please contact your Xerox sales representative or the Xerox Office Printing Help Desk at:

U.S. AND CANADA 1-877-362-6567

OR VISIT US ON THE WEB AT: WWW.XEROX.COM/OFFICEPRINTING



©2001 XEROX CORPORATION. All rights reserved. Contents of this publication may not be reproduced in any form without permission of XEROX CORPORATION. Phaser®, the TekColor® icon, and Xerox, The Document Company are registered trademarks of XEROX CORPORATION. Total Satisfaction ServicesSM is a service mark of XEROX CORPORATION. Tektronix® is a registered trademark of Tektronix, Inc. licensed to XEROX CORPORATION. Adobe® Illustrator®, Photoshop®, PostScript®, and ATM® are registered trademarks Adobe Systems Incorporated or its subsidiaries which may be registered in certain jurisdictions. Apple®, LocalTalk®, Macintosh®, Mac® OS, AppleTalk®, are registered trademarks of Apple Computer Incorporated. PCL® and HP-GL® are registered trademarks of Hewlett-Packard Corporation. MS-DOS® and Windows® are registered trademarks of Microsoft Corporation. Novell® and NetWare® are registered trademarks of Novell, Incorporated. Sun®, Sun Microsystems®, and Sun Microsystems Computer Corporation® are registered trademarks of Sun Microsystems, Incorporated. Ethernet® is a registered trademark of XEROX CORPORATION. UNIX® is a registered trademark in the US and other countries, licensed exclusively through X/Open Company Limited. Other marks are trademarks or registered trademarks of the companies with which they are associated. PANTONE® Colors generated may not match PANTONE-identified standards. Consult current PANTONE Publications for accurate color. PANTONE® and other Pantone, Inc trademarks are the property of Pantone, Inc. The information in this booklet is subject to change without notice.

JS/SP 8/01