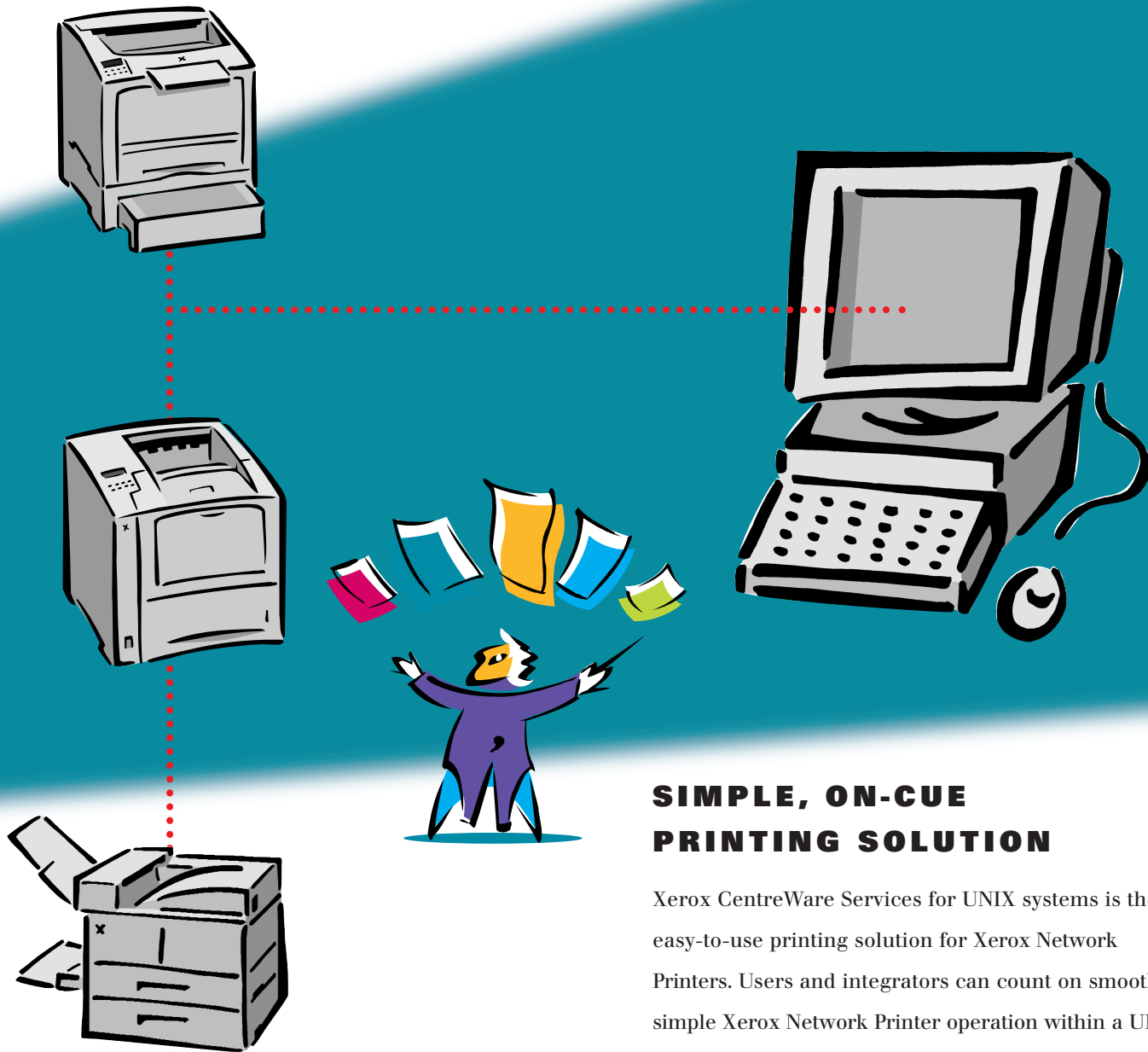


XEROX
CENTREWARE SERVICES FOR
UNIX™ SYSTEMS

FOR XEROX NETWORK PRINTERS

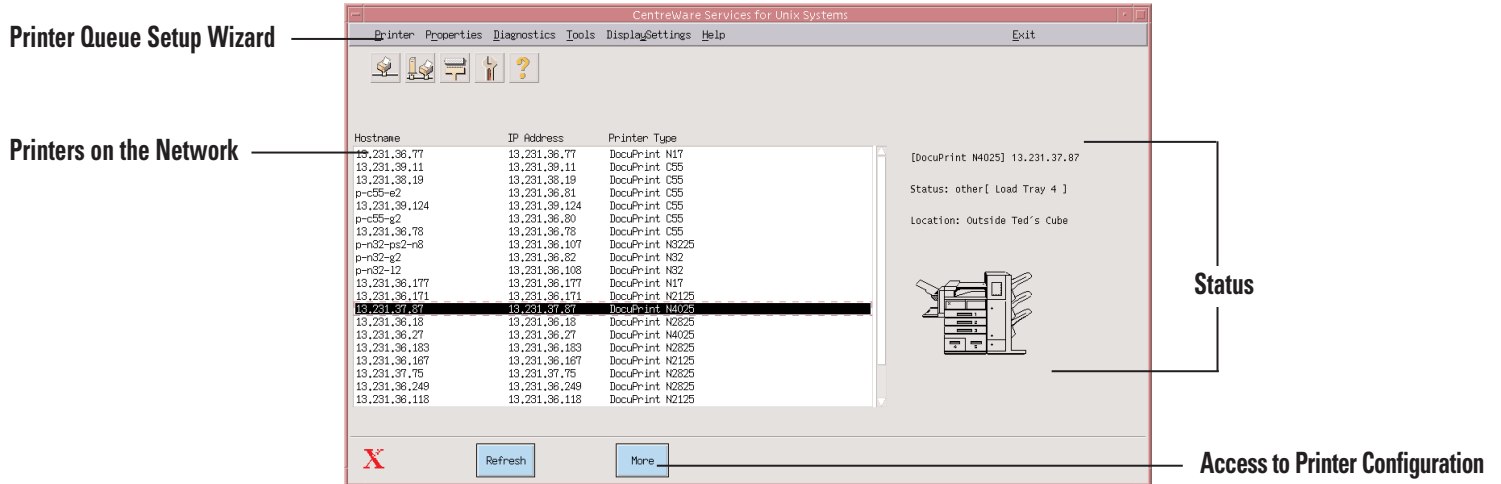


SIMPLE, ON-CUE
PRINTING SOLUTION

Xerox CentreWare Services for UNIX systems is the easy-to-use printing solution for Xerox Network Printers. Users and integrators can count on smooth, simple Xerox Network Printer operation within a UNIX environment. CentreWare Services for UNIX systems, combined with Xerox expertise in network printing, offers a high-performance printing solution users can put to work right out of the box.



KEY FEATURES AND BENEFITS OF XEROX CENTREWARE SERVICES FOR UNIX™ SYSTEMS



Printer Queue Setup Wizard.

CentreWare Services' step-by-step guide simplifies the process of enabling and connecting Xerox printers to a network. Printer queues are easily created and IP addresses automatically discovered, thereby eliminating the need to manually enter IP addresses. The setup options for each printer include peer to peer and client to print server mode.

Streamlined Software Installation.

Driver installation and management has been streamlined with the inclusion of UNIX drivers in CentreWare Services, eliminating the need to locate and install drivers separately. Any driver or CentreWare Services updates can now be handled all at once, reducing the time required for software installation and maintenance. CentreWare needs to be installed on only one print server, and jobs from multiple clients may be processed on a single server.

Robust Print Submission Tool.

Allows user interface enabled or silent print submission using standard lp/lpr command. End users select the printing features such as duplex and stapling from the GUI menu or by using the command line options.

Remote Configuration and Management.

CentreWare Services allows system administrators to remotely configure, monitor and manage all supported Xerox printers on local and wide area networks.

Real Time Status Check.

No need to worry about playing the guessing game when it comes to a printer's status. CentreWare Services allows the administrator to perform up-to-the-minute status checks to keep Xerox printers fully operational.

SUPPORTED ENVIRONMENTS FOR CENTREWARE SERVICES FOR UNIX SYSTEMS:

Solaris™ v2.5, v2.5.1, and v2.6 and Solaris 7

Xerox TTY Print Services

A simplified text based printing solution that supports printer queue setup, full featured printing, and streamlined software installation is also available. This version does not support device discovery or GUI-based print submission.

SUPPORTED ENVIRONMENTS FOR TTY PRINT SERVICES:

HP UX V10.X and V11.X, AIX v4.2 and v4.3, DEC v4.0, SGI V6.2 and SGI v6.4, SCO Unixware 7, Redhat Linux V5.2 and V6.X

PRINTER SUPPORT (CENTREWARE & TTY):

Xerox DocuPrint C55, N17, N24, N32, N40, NC20, NC60, C55, 4512*, 4517**, N2125, N2025, N2825, N3225, N4025, and Xerox Phaser® 860 and 7700.

* DocuPrint 4512 requires firmware software version 600.146 or higher.

** DocuPrint 4517 requires firmware software version 2.0 or higher.

Limited status information is provided for Hewlett-Packard JetDirect connected printers.

SOFTWARE DISTRIBUTION:

Xerox CentreWare Services can be obtained with the purchase of a Xerox network printer, or from our web site at www.xerox.com

XEROX™, The Document Company, the digital X™ CentreWare™, DocuPrint™, Phaser®, Keep the Conversation Going. Share the Knowledge., the "Maestro" logo, and all Xerox product names are trademarks of XEROX CORPORATION. Other product and/or company names herein are trademarks of their respective owners. Product appearance and/or specifications are subject to change without notice. 11/01 NETFS-05UC

**KEEP THE CONVERSATION GOING.
SHARE THE KNOWLEDGE.**

THE DOCUMENT COMPANY
XEROX®