

# PHASERLINK

## NETWORK PRINTER MANAGEMENT

### SIMPLIFYING PRINTER MANAGEMENT

PhaserLink™ printer management software is a printer administration and support tool using World Wide Web technology. PhaserLink software lets you get easy, fast access to all the information about your Tektronix printer right from your desktop, using a standard web browser. Easily set up, configure and remotely monitor printers over the network. Quickly access on-line manuals and technical support information by using built-in links to the Tektronix web site. PhaserLink software is standard equipment—built into the new generation of Tektronix color printers.

#### FOR USERS:

##### PRINTER STATUS

PhaserLink software makes networking easy by providing access to real-time printer and job-status information. You can set printer defaults for print resolution, tray selections, color rendering options, and more, or check on the status of your print job and the location of the printer—all from your desktop.

##### SEARCH AND ASSIST

PhaserLink software provides fast and easy access to Tektronix support web sites. Search through a virtual library of information in seconds. Get up-to-date user documentation and software updates.

PhaserLink software also provides fast links to useful tools and tutorials for using color in your documents.

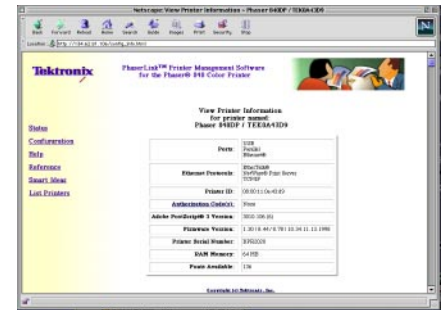
#### FOR ADMINISTRATORS:

##### PRINTER CONFIGURATION AND MANAGEMENT

PhaserLink software provides unsurpassed ease-of-use for setting up and configuring printers on a network and for ongoing printer support.

Centralized setup, and the ability to view and configure the settings for all network protocols, along with setting printer defaults, simplifies the task of integrating printers. Built-in password protection prevents unauthorized changes.

Real-time alerts notify key operators of consumables status or printing problems, to keep downtime to a minimum. And job accounting lets you track printing usage and statistics to better allocate resources.



### PHASERLINK KEY FEATURES

#### LIST PRINTERS

Network-wide monitoring tool.

#### CONFIGURATION

Set printer defaults, and view and configure settings for all network protocols.

#### REMOTE PRINTER MONITORING

Check printer status, change settings, and troubleshoot without leaving your desk.

#### PROACTIVE PRINTER NOTIFICATION

The printer sends you an email when it needs attention.

#### CONSUMABLES STATUS

Check on ink and consumables before levels get low.

#### JOB ACCOUNTING

Track printing usage and job statistics.

#### SECURITY FEATURES

Printer access passwords prevent unauthorized changing of settings.

#### LINKS TO SUPPORT AND COLOR TOPICS

Download Tektronix drivers and support documents, and get quick access to color tools and tutorials.

#### LOCAL HELP-PAGE LINK

Add pointers to your local web site for site-specific printer assistance and information.

PLSDS-01UA

[www.tektronix.com/Color\\_Printers/](http://www.tektronix.com/Color_Printers/)

**Tektronix®**

