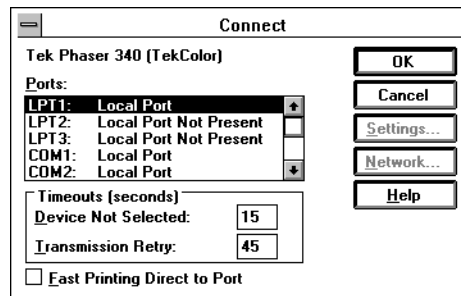


Configuring the driver

1. The **Printers** dialog box should already be displayed; if not, open the **Control Panel** and double-click the **Printers** icon.
2. Choose your printer from the list of installed printers.
3. Choose the **Set As Default Printer** button if you want to select your printer as the default.
4. Choose the **Connect** button; the **Connect** dialog box appears.



5. Select the port your printer is connected to.

The printer’s configuration page contains the information you need to set up the printer’s port.

Interface	Select	Then do the following
Parallel	LPTx	Go to Step 6.
Serial	COMx	<ol style="list-style-type: none">1. Click the Settings button to open the Settings dialog box.2. Fill in each item based on your configuration, then click OK.3. Refer to your Microsoft Windows documentation for details, or ask your network administrator for help.
Network	Network port (LPTx or COMx)	<ol style="list-style-type: none">1. Click the Network button to open the Printers-Network Connections dialog box.2. Fill in each item based on your configuration, then click OK.3. Refer to your Microsoft Windows documentation for details, or ask your network administrator for help.

Note *You can use the **FILE:** port to send a PostScript document to a file instead of to the printer. For more information, see your Microsoft Windows documentation.*

6. Set the **Timeouts**. These options regulate your computer's communications with its printer ports.
 - **Device Not Selected:** Type a value of **0**, or between **15** and **999**, in this text box to change the number of seconds Windows waits before notifying you that a printer is off-line. The default is **15** seconds.
 - **Transmission Retry:** On large or multiple page documents you may see an Alert message that the printer is no longer accepting data before the job is completely downloaded to the printer. When using the Print Manager with a shared printer, you should set this option to a larger value, such as **850** to avoid these unnecessary timeouts. Type a value between **45** and **850** in this text box; the default setting is **45** seconds.
7. Choose the **OK** button to return to the **Printers** dialog box, then choose the **Setup** button. A dialog box appears with the name of the printer you selected across the top. Use this dialog box to select paper source, paper size and image orientation.
8. Choose the **Options** button to see the **Options** dialog box. Check the **Color** box to print in color.
9. From the **Options** dialog box, choose the **Advanced** button to see the **Advanced Options** dialog box. Make sure the **Use PostScript Level 2 Features** check box is checked *on*. Choose the **OK** button to return to the **Options** dialog box.

Note *The **Use PostScript Level 2 Features** option affects the print time of bitmapped (raster) images by improving the image transfer time from the computer to the printer, and by improving the image processing time in the printer. This option is only available to applications that use this Tektronix driver with Tektronix PostScript Level 2 printers, such as the Phaser 340. When this box is checked, the **Compress Bitmaps** option is unavailable (grayed out).*

10. Choose the **OK** button to return to the **Options** dialog box.
11. In the **Options** dialog box, choose the **Printer Features** button to see the **Tektronix Printer Features** dialog box. Make color correction, print quality, and tray selections as desired. Choose the **OK** button to return to the **Options** dialog box.
12. Choose the **OK** button to return to the dialog box that lists your printer's name across the top.
13. Choose the **OK** button to return to the **Printers** dialog box.
14. Choose the **Close** button.

If you are using PC/NFS

If you have PC/NFS software installed on your computer, you need to make the following selection in the **Network Options** dialog box:

1. From the **Main** window, double-click the **Print Manager** icon.
2. From the **Options** menu in the **Print Manager**, select **Network Settings**.
3. In the **Network Options** dialog box, uncheck the **Print Net Jobs Direct** box.
4. Choose the **OK** button.