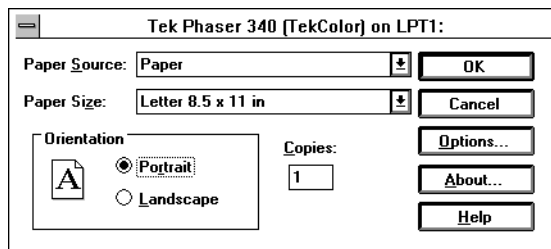


## Using the driver's options

Use the following dialog boxes to select printing options.

### Making selections in the Setup dialog box

To reach the **Printer Setup** dialog box without running an application, open the **Control Panel**, double-click on the **Printers** icon, then choose the **Setup** button. Make printer selections in the fields described in the following table.

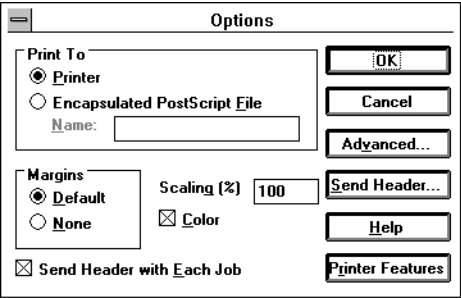


### Setup dialog box options

Dialog box options	Option description
Paper Source	Select one of the following Paper Source options: <ul style="list-style-type: none"><li>■ Upper Tray</li><li>■ Lower Tray</li><li>■ Paper</li><li>■ Manual Paper</li><li>■ Transparency</li><li>■ Manual Transparency</li></ul>
Paper Size	Select a paper size from the pop-up menu.
Orientation	Select one of the following options to determine how an image is placed on the paper: <ul style="list-style-type: none"><li>■ <b>Portrait</b> (vertical)</li><li>■ <b>Landscape</b> (horizontal)</li></ul>
Copies	Type in the number of copies (prints) you want. (You may want to set the number of copies from your application because the number of copies in the Setup dialog box remains the same until you change it again.)  If you are printing multiple copies, make sure the Transmission Retry is set for at least 600 seconds (10 minutes).

## Making selections in the Options dialog box

From the **Setup** dialog box, choose the **Options** button to see the **Options** dialog box. Refer to your Microsoft Windows documentation for details on the options in this dialog box. Make printer selections in the fields described in the following table.



### Options dialog box options

Dialog box options	Option descriptions
Print To	Select one of the following options: <ul style="list-style-type: none"><li>■ <b>Printer</b></li><li>■ Encapsulated PostScript File (This option generates an EPS graphic that can be imported into other applications. This option does not create a printable file.)</li></ul>
Scaling	Type in a percentage value to scale the printed image.
Margins	Select one of the following options: <ul style="list-style-type: none"><li>■ Default</li><li>■ None</li></ul>
Color	Check this box <b>on</b> to print in color.
Send Header with Each Job	This box must be checked <b>on</b> . (The Header contains important PostScript information that must accompany each print job; it is <i>not</i> a banner page printed with each job. If this box is not checked, an error message is displayed on your computer screen and your job does not print.)
Printer Features button	Choose this button to see the <b>Tektronix Printer Features</b> dialog box.

## Making selections in the Tektronix Printer Features dialog box

From the **Options** dialog box, choose the **Printer Features** button to see the **Tektronix Printer Features** dialog box. Make printer selections in the fields described in the following table.

Tektronix Printer Features

Color Correction:

Vivid Color

OK

Print Quality:

300 dpi

Cancel

Help...

### Tektronix Printer Features dialog box options

Dialog box options	Option description
Color Correction	Select one of the following options: <ul style="list-style-type: none"><li>■ None</li><li>■ Vivid Color*</li><li>■ Simulate Display</li><li>■ SWOP Press</li><li>■ Euroscale Press</li><li>■ Commercial Press</li><li>■ Monochrome</li><li>■ Use Printer Setting</li></ul>
Print Quality**	Select one of the following options: <ul style="list-style-type: none"><li>■ 300 dpi*</li><li>■ 600x300 dpi</li></ul>

\* These are the factory default settings.

\*\* These options are available with the optional Plus configuration of the printer. See the *Phaser 340 Color Printer User Manual* for more information.