

LaserWriter 8.x printer driver

You can use Apple's LaserWriter driver version 8.x with a Phaser 340 printer. Some applications, such as Aldus PageMaker 5.x, use the LaserWriter 8.x driver instead of the Tektronix driver.

Installing the LaserWriter 8.x driver

Note *During installation, the LaserWriter 8.x driver leaves other versions of the LaserWriter driver intact, so this driver can co-exist with the Tektronix driver.*

Refer to the LaserWriter driver's documentation, *LaserWriter 8.x Update Guide*, for instructions on installing the driver.

Using the LaserWriter 8.x driver with a Phaser 340

The LaserWriter 8.x driver uses printer-specific 4.x PPDs (PostScript Printer Description files) for information on a printer's page sizes, printing options, and media type options. To use the LaserWriter 8.x driver with a Phaser 340 printer, do the following steps. If the printer is busy, it may take some time to complete this configuration procedure; you may want to do this procedure when the printer is idle. You only have to configure a printer once.

1. Decompress the *Phaser 340 Apps.sea* archive file on the Macintosh Driver and Printer Utilities diskette to a folder on your hard disk.
2. Locate and open the *4.x PPDs Folder* in the folder on your hard disk containing decompressed files.

3. Place the correct PPD file with other PPDs for the LaserWriter 8.x driver in the *Printer Descriptions* folder, in the *Extensions* folder, inside the *System Folder*.
 - Use the *TK340171.PPD* file with the standard version of the printer (with 17 fonts).
 - Use the *TK340691.PPD* file with the optional Plus configuration of the printer (with 69 fonts).

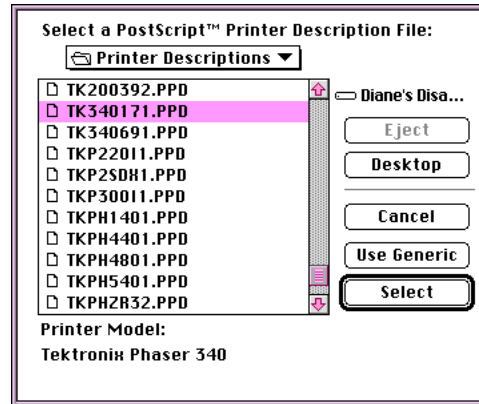
Note *If you are not sure of the number of fonts installed in your printer, the printer's startup page lists the number of fonts installed. Refer to the web **topic "Startup page, disabling"** for instructions on printing a copy of the printer's startup page.*

4. Open the **Chooser**.
5. Select the **LaserWriter 8.x** driver icon.
6. Select your printer from the list.
7. Still in the **Chooser**, click the **Setup** button to see a list of options.
8. In the dialog box that appears, click the **More Choices** button to see the full range of options.

Note *Do not use the Auto Setup button; errors can occur with the PPD files. Continue with this procedure to properly set up the driver.*

9. Click the **Printer Info** button, then click the **Update info** button in the next dialog box.
10. Record the information on **PostScript Version** and **Total Memory Installed**; you will need this information later. Click **OK**.

11. Click the **Select PPD** button; the *Printer Descriptions* folder in the *Extensions* folder, inside the *System Folder*, is displayed.

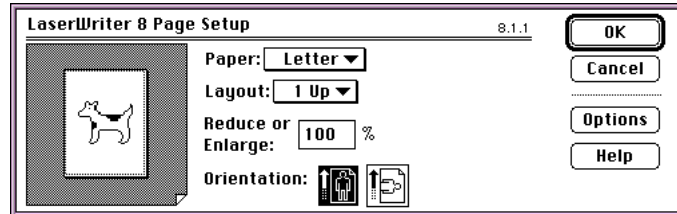


12. Select the PPD file you installed in Step 3, either *TK340171.PPD* or *TK340691.PPD*.
13. Make sure the information under **Printer Model** matches the printer you have and the **PostScript Version** information you got in Step 9.
14. Click **Select**.

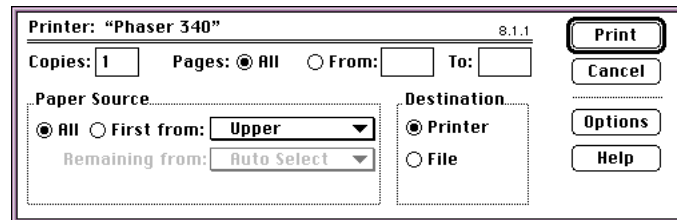
Note *If the information under **Printer Model** is not an exact match, use the closest printer name, and call Tektronix Customer Support in the U.S. and Canada at **1-800-835-6100** for the latest PPD file. Outside the U.S. and Canada, contact your local Tektronix reseller. You can also download the latest PPD files from the Tektronix Bulletin Board Service (BBS).*

15. Click **Configure**. In the field for **Memory Configuration** under **Installable Options**, select the amount of memory your printer has installed. Check other options either **Installed** or **Not Installed**, as appropriate.

16. Click **OK** in two dialog boxes and close the **Chooser**.
17. Open the **Page Setup** dialog box to see a pop-up menu with all of the printer's supported paper sizes.



18. Open the **Print** dialog box and select the **Paper Source**.



19. In the **Print** dialog box, click the **Options** button to see the **Print Options** dialog box. There are printer-specific **TekColor** features listed at bottom of the dialog box.

