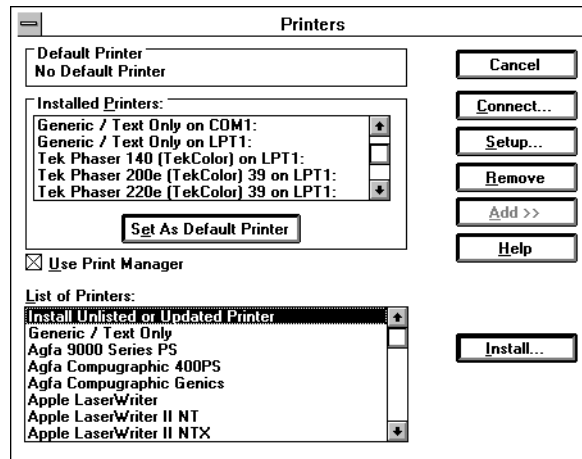


Installing the driver

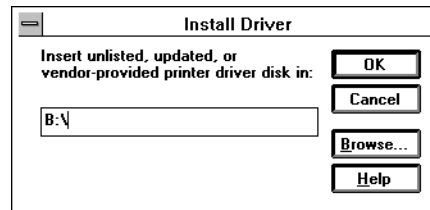
The Tektronix Windows driver is a Windows PostScript driver customized for Tektronix printers. These instructions assume a basic familiarity with Windows operation and terminology. For additional information about Windows, refer to your Microsoft Windows documentation.

1. Insert the Tektronix Windows 3.1 Driver and Printer Utilities diskette into your computer's disk drive, for example, drive **B:**.
2. Start **Windows**.
3. Open the **Control Panel**. Double-click on the **Printers** icon; the **Printers** dialog box appears.
4. Choose the **Add>>** button.
5. In the **List of Printers**, select **Install Unlisted or Updated Printer**.



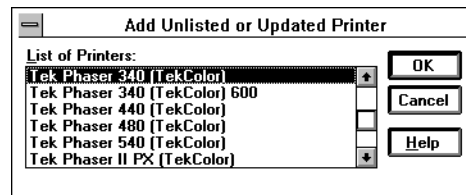
6. Choose the **Install** button.

7. Type in the drive containing the PC diskette, for example, drive **B:**, and select the **OK** button.



8. To install your printer, do the following:
- Print a startup page to determine your printer's configuration: Standard or Plus.
 - If you have the standard version of the printer, select **Tek Phaser 340 (TekColor)**.

If you have the optional Plus configuration of the printer, select **Tek Phaser 340 (TekColor) 600**.



Note *If you have the Plus configuration of the printer, you must install the **Tek Phaser 340 (TekColor) 600** for Windows to recognize and use all of the printer's fonts.*

*If you select **Tek Phaser 340 (TekColor) 600** and you have only the standard version of the printer with 17 fonts, any of the additional fonts selected within an application are printed in the Courier font.*

- c.** Choose the **OK** button. The driver software you need is automatically installed.
- 9.** Continue the installation by configuring the driver.