

Using ColorSync color matching

ColorSync 2.0 is a color matching system that attempts to match the screen's colors to the printer's colors. The software for the Phaser 340 printer includes a printer profile that contains specific color information required by ColorSync.

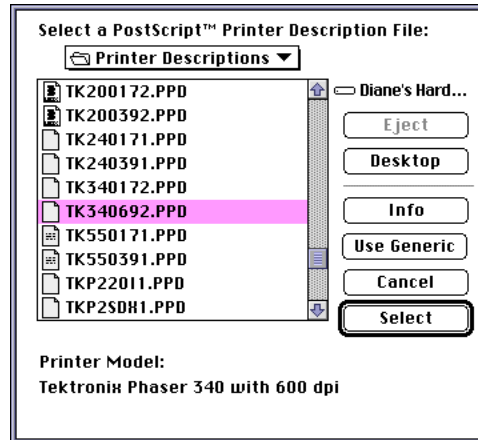
ColorSync adjusts an image's colors on the computer. The TekColor color corrections adjust an image's colors in the printer. You should use only one method of color adjusting at a time, or you may get unexpected results.

To use ColorSync color matching, you need to do the following:

1. Install the LaserWriter 8 printer driver version 8.3. For a copy of this driver, see your local Apple dealer, CompuServe, or America OnLine. This driver supports ColorSync 2.0, which is installed with the driver software.
2. Use the installer application to install the Phaser 340 printer software. Select one of the standard options, or install *both* the **PPD files for drivers and applications** option *and* the **ColorSync Profiles** option.
3. Set up the driver:
 - a. Open the **Chooser** from the Apple menu.
 - b. Select the **LaserWriter 8** driver.
 - c. Select your printer in the list.
 - d. Click the **Setup** button.

- e. If the correct PPD file is installed on your hard disk, it is automatically selected.

If the correct PPD file is not properly installed, the following dialog box opens showing the location of the PPD files you installed in Step 1.



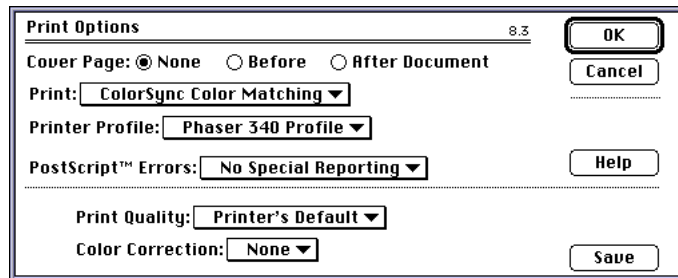
Select the *PPD* file you installed in Step 2:

- Use the *TK340172.PPD* file with the standard version of the printer (with 17 fonts).
- Use the *TK340692.PPD* file with the printer's extended features option (with 69 fonts).

Note *If you are not sure of the number of fonts installed in your printer, the printer's startup page lists the number of fonts installed.*

- f. Click the **Select** button.
- g. Click **OK**, then close the **Chooser**.

4. Select **ColorSync System Profile** in the **Control Panel**, and select the profile for your monitor.
5. Open an application that supports ColorSync 2.0.
6. Select **Print** from the **File** menu.
7. In the **Print** dialog box, click **Options**.



8. In the **Options** dialog box, make the following selections:
 - a. Select **ColorSync Color Matching** in the **Print** pop-up menu.
 - b. Select your printer in the **Printer Profile** pop-up menu.
 - c. Select **None** in the **Color Corrections** pop-up menu.
 - d. Click **OK**.
9. Click **Print** in the **Print** dialog box.