

Using the PC utility files

In addition to using the printer's front panel or the options in a supported driver, the utility files offer another method for changing the way the printer operates. In some cases, a selection can only be made with a utility file. To use the files, send or download them to the printer from the communications port your printer is connected to. You can use either the DOS method or the Windows method.

Click on the following topics for more information:

- [Installing the files](#)
- [Downloading files from Windows 3.1](#)
- [Downloading files from Windows 95](#)
- [Downloading files from DOS](#)

Installing the files

You can use the installer application on either the Phaser 340 CD-ROM or the Printer Software for Windows diskette, to load the printer description files, color sampler charts, the fonts sampler, and the printer utility files to your computer's hard disk. Or, you can copy the software from the CD-ROM or diskette to your hard disk.

Click on the following topics for more information:

- [Using the installer application](#)
- [Copying files from the CD-ROM or diskette](#)

Using the installer application

1. Insert the Phaser 340 CD-ROM in your computer's CD-ROM drive, or insert the Printer Software for Windows diskette in your computer's disk drive.
2. Do one of the following depending on your Windows system:

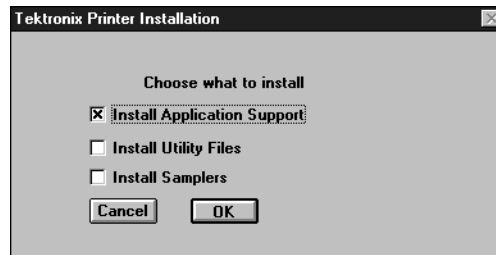
Windows 95:

- a. Click the **Start** icon in the taskbar on your screen. In the menu that appears, click **Run**.
- b. In the **Run** window, type in the drive the CD-ROM or diskette is in, followed by the file name *SETUP.EXE*.
- c. Click **OK**.

Windows 3.1:

- a. In the **Program Manager**, select **Run** from the **File** menu.
- b. At the **Command Line**, type in the drive the CD-ROM or diskette is in followed by the file name *SETUP.EXE*.
- c. Click **OK**.

3. In the **Tektronix Printer Installation** window, select one or more of the following options, then click **OK**:



- **Install Application Support** installs PPDs and a PDF for use with specific applications.
 - **Install Utility Files** installs printer utility files.
 - **Install Samplers** installs color and font samplers.
4. When prompted for a directory name to use for installing the software, use the default directory name *PHSRTOOL* or type in a new name, then click **OK**.



5. At the message dialog box, click **OK**; the **Control Panel** opens.

Copying files from the CD-ROM or diskette

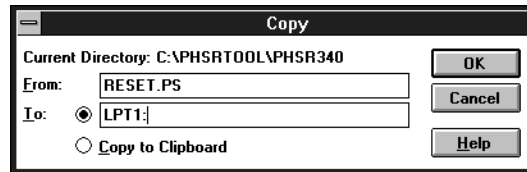
You can copy any of the files from the Phaser 340 CD-ROM or Printer Software for Windows diskette to your computer's hard disk. You can also use the files directly from the CD-ROM or diskette.

Follow usual Windows or DOS procedures for copying files to your hard disk.

Downloading files from Windows 3.1

You can use the **Copy** command in the Windows **File Manager** to download PostScript files to the printer.

1. Locate the directory containing the printer's utility files. This directory was created when you ran the installer application.
2. Select the utility file you want to send to the printer, for example *RESET.PS*.
3. From the **File** menu, select **Copy**. The **Copy** dialog box appears with the utility file you selected listed in the **From** field:



4. In the **To** field, type the port your printer is connected to. For example, type **LPT1:** for a parallel port connection, then click **OK**.
5. If the **Confirm File Replace** dialog box appears, click **Yes** to continue; the file is downloaded to the printer.

Downloading files from Windows 95

Use the DOS **COPY** command to send the desired file to the printer. To find the DOS prompt:

1. Click **Start** in the taskbar on your screen.
2. In the menu that appears select **Programs**.
3. Select **MS-DOS Prompt** from the list.

Downloading files from DOS

You can use the DOS **COPY** command to download PostScript files to the printer.

Use the DOS **COPY** command to send the desired file to the printer. For example, to reset the printer you would send the *RESET.PS* file to the printer.

- If your printer is connected to the parallel (LPT) port, type the following command (where *x* is 1, 2, or 3):

COPY RESET.PS LPTx:

- If your printer is connected to the optional serial (COM) port, type the following command (where *x* is 1, 2, or 3):

COPY RESET.PS COMx:

- If your printer is connected to an optional Novell or TCP/IP network, you should follow the instructions provided with your network software.

List of downloadable utility files

All of the files in the following table can be downloaded to the printer using the DOS **COPY** command or the **File/Copy** command in Windows 3.1.

Downloadable utility files	
■ CTRLD.PS	
■ 300_DPI.PS*	■ 600X300.PS*
■ ANYTRAY.PS	■ UPPRTRAY.PS
■ LOWRTRAY.PS	
■ COMRCIAL.PS	■ RAWCMYK.PS
■ DISPLAY.PS	■ RAWRGB.PS
■ EUROSCAL.PS	■ SWOPRESS.PS
■ MONOCHRM.PS	■ VIVDCOLR.PS
■ NOCORECT.PS	
■ CMYK.PS	■ PANT340.PS
■ HSB.PS	■ RGB.PS
■ FONTS.PS	
■ SETSCRN.PS	■ TEKEHAND.PS
■ CTRLD.PS	■ DEVPARAM.PS
■ PRNTNAME.PS	■ RESET.PS
■ PRNTCNFG.PS	■ PRNTSTPG.PS
■ NOSTRTPG.PS	■ STARTPG.PS
■ BIDIR.PS	■ UNIDIR.PS
■ MENULONG.PS	■ MENUSHRT.PS
■ PIPE_OFF.PS*	■ PIPE_ON.PS*
■ FRMTDISK.PS	■ NOSYSTRT.PS
■ INITDISK.PS	■ SYSTART.PS
■ AIS.PS	■ HPGLTEST.PLT
■ HPGL.PS	■ PSTEST.PS
■ HPGLPENS.PS	■ PSCRIPT.PS
■ CONFIG.PS	

* These utility files are for use with the printer's extended features option only.