

Using the printer with Windows 3.1

The following procedure automatically installs the Adobe PS3 printer driver and PostScript printer description files (PPDs) required by some applications. The Adobe PS3 driver works faster and more efficiently with the Adobe PostScript interpreter inside your Phaser 340 printer than other drivers, especially if you are using TrueType fonts.

Click on the following topics for more information:

- [Installing a printer driver](#)
- [Using printer options in the Adobe PS3 driver](#)

Installing a printer driver

1. Make sure Windows 3.1 is running.
2. The driver installation overwrites an older version of the Adobe PostScript printer driver. If you already have an Adobe driver installed, you may want to remove your installed Tektronix printers before continuing, and reinstall them later with the newer driver.

Follow these steps to remove printers with an older driver:

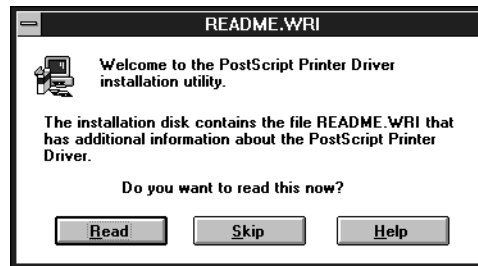
- a. From the **Control Panel**, double-click **Printers**.
 - b. In the **Printers** dialog box, select a printer that was set up with an older version of the Adobe driver, and click **Remove**.
 - c. Repeat Steps **a** and **b** for all printers installed with the Adobe driver.
 - d. After you have installed the new driver, you can reinstall your existing printers (PPDs) through the **Adobe PostScript Printers** dialog box in the **Control Panel** from software available on the Phaser 340 CD-ROM or diskettes.
3. Quit all applications, including the **Control Panel**.
 4. Use either the Phaser 340 CD-ROM or floppy diskette:
 - **CD-ROM:** Insert the Phaser 340 CD-ROM into your CD-ROM drive.
 - **Diskette:** Insert the Adobe PS3 Driver for Windows 3.1 diskette from Tektronix into your computer's disk drive.
 5. In the **Program Manager**, select **Run** from the **File** menu.

6. At the **Command Line**, type one of the following, replacing A: with the correct drive, then click **OK**.

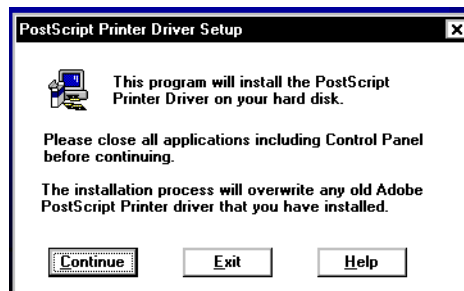
■ **CD-ROM:** *A:\win31drv\setup*

■ **Diskette:** *A:setup*

7. At the **README.WRI** dialog box, click one of the buttons. The *README* file contains information on installing the driver and application notes. Clicking **Read** opens the *README* file. Clicking **Skip** (or quitting the *README* file) moves you to the next dialog box listed in Step 8.



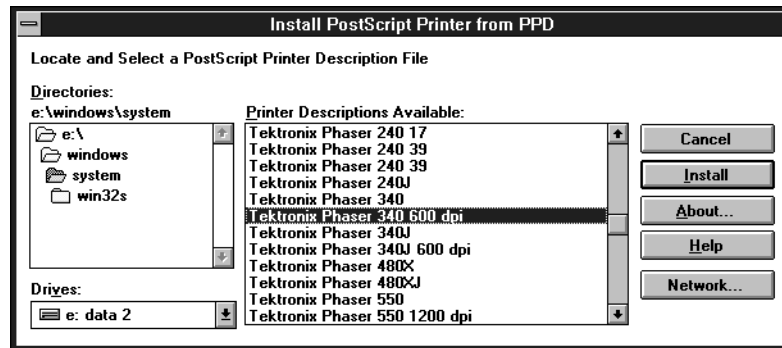
8. In the **PostScript Printer Driver Setup** dialog box, click **Exit** if you need to quit any open applications, or click **Continue** to start the driver installation.



9. You will see a status dialog box during the installation procedure. At the end of the installation, click the **Restart Windows** button.



10. After Windows restarts, the **Install PostScript Printer from PPD** dialog box opens.



11. Select your printer in the **Printer Descriptions Available** list and click **Install**:
 - Select **Tektronix Phaser 340** if you have the standard version of the printer with 17 fonts.
 - Select **Tektronix Phaser 340 600 dpi** if you have the printer's extended features option with 69 fonts.

Note *If you are not sure of the number of fonts installed in your printer, the printer's startup page lists the number of fonts installed.*

12. At the installation successful message, click OK.
13. Click Close in the **Install PostScript Printer from PPD** dialog box.
14. At the message, click **OK**; the **Control Panel** opens.
15. From the **Control Panel**, double-click **Printers**.
16. In the **Printers** dialog box, select the **Tektronix Phaser 340** printer you just installed, then click **Connect**.
17. In the **Connect** dialog box, select the port the printer is connected to, then click **OK**.
18. Continue with the topic [Using printer options in the Adobe PS3 driver](#).

Note *Refer to the README file on the Adobe PS3 Driver for Windows 3.1 diskette from Tektronix, or to the Adobe PostScript Printer Driver User Guide, for more detailed information on installing and using the Adobe PS3 driver.*

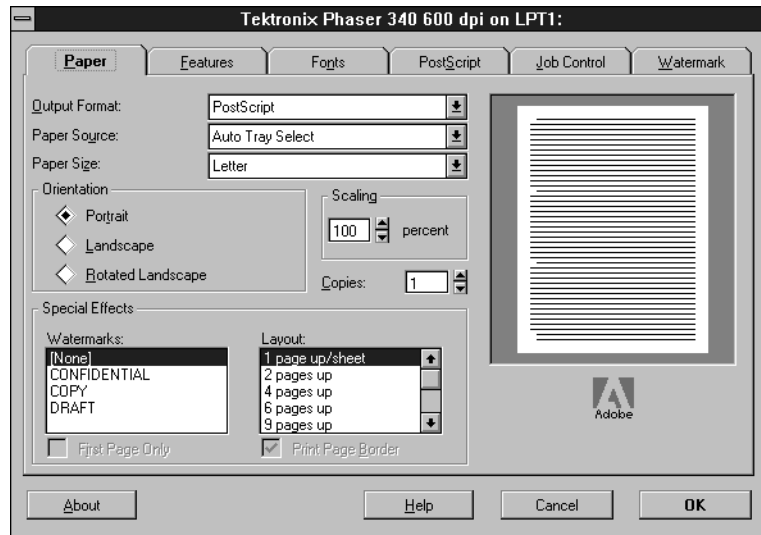
Using printer options in the Adobe PS3 driver

To select printing options, follow these steps:

1. From the **Control Panel**, double-click **Printers**.
2. In the **Printers** dialog box, select the **Tektronix Phaser 340** printer, then click **Setup**. A dialog box appears with the printer's name across the top.
3. Select the following tabs to select printing options:
 - [Paper](#)
 - [Features](#)
 - [PostScript](#)
 - [Job Control](#)

Paper

Click the **Paper** tab to see the following options:



- Select a media size in the **Paper size** field.

■ Letter (U.S.)	■ A4 (metric)
-----------------	---------------

- Select a media tray or media type in the **Paper Source** field.

■ AutoSelect Tray

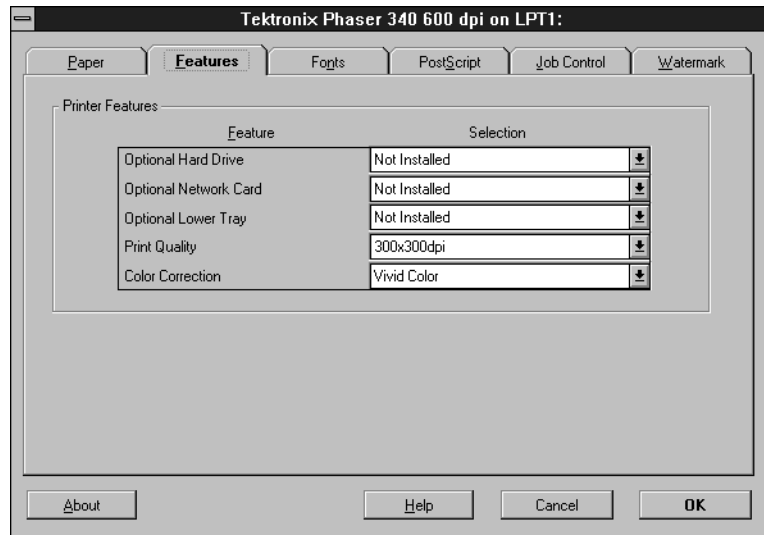
■ Upper	■ Lower
---------	---------

■ Paper	■ Transparency
---------	----------------

■ Manual Paper	■ Manual Transparency
----------------	-----------------------

Features

Click the **Features** tab to see the following options:



- To select TekColor printer color corrections, follow these steps:

- Select **Color Correction** in the scroll list.
- Select a color correction in the pop-up list.

■ None	■ Vivid Color	■ Simulate Display
■ SWOP Press	■ Euroscale Press	■ Commercial Press
■ Monochrome	■ Use Printer Setting	

- To select print quality modes, follow these steps:
 - a. Select **Print Quality** in the scroll list.
 - b. Select a print quality mode in the pop-up list.

■ 300x300 dpi*	■ 600x300 dpi*
----------------	----------------

* These options are available only with the printer's extended features option.

PostScript

Click the **PostScript** tab to see PostScript-related options.

- In the **Performance Options** field, select the **Use PostScript Level 2 Features** option.

Job Control

Click the **Job Control** tab to see print job-related options.

- The PostScript header contains important PostScript information that must accompany each print job; it is not a banner page printed with each job. If an option is not selected, an error message is displayed on your computer screen and your job does not print. Click one of the following in the **PostScript Header** field:
 - Select **Download Each Job**. This option downloads PostScript header information with each print job.
 - Select the **Already Downloaded** option to save the PostScript header information in the printer, then click the **Download** button. This option makes print files a little smaller and faster than the first option, but you need to click the **Download** button every time the printer is turned off or reset.
- For better performance, select the **Binary Mode** option.