

# Using the printer with Windows 95

For better performance and added features when printing from Windows 95, it is recommended that you use the Windows 95 printer driver and not the Windows 3.1 printer driver. Using the Windows 3.1 printer driver in Windows 95 may cause printing problems.

To print to a Phaser 340 printer from Windows 95, do the following steps:

- Remove Windows 3.1 printer drivers, if you have any installed under Windows 95. For better printing performance, use the Windows 95 printer driver.
- Add the Phaser 340 printer to the **Printers** window from software available on the Phaser 340 CD-ROM or floppy diskettes.

Click on the following topics for more information:

- [Removing a Windows 3.1 driver in Windows 95](#)
- [Adding the Phaser 340 printer to the Windows 95 driver](#)
- [Using printer options in the Windows 95 driver](#)

## Removing a Windows 3.1 driver in Windows 95

If you installed a Tektronix Windows 3.1 printer driver in Windows 3.1, then upgraded from Windows 3.1 to Windows 95, the driver will appear in Windows 95. You should remove any Windows 3.1 drivers and install the Windows 95 driver and your printer.

### Removing printers and older drivers

1. Start Windows 95.
2. Click the **Start** icon in the taskbar on your screen; a menu appears.
3. Move the cursor over **Settings**; another menu appears.
4. In the menu, click **Printers**; the **Printers** window appears.
5. Look for any Tektronix Phaser printers with **(TekColor)** as part of the printer's name.

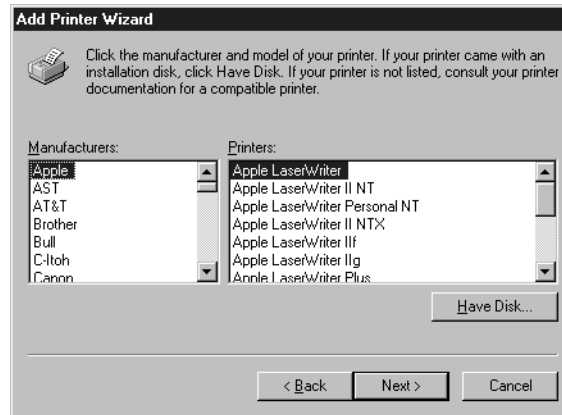
**Note** *If you renamed your printer and **(TekColor)** is not part of the printer's name, but you think a Tektronix Phaser printer icon is an older printer file, move the cursor over the printer icon, and click the right mouse button. In the menu that appears, click **Properties**; the **Properties** dialog box appears. If **General** and **Details** are the only tabs available, then this is an older printer file. Continue with the steps below to remove the printer.*

6. Move the cursor over a printer icon, and click the *right* mouse button; a menu appears.
7. In the menu, click **Delete**. When prompted, click **Yes** to delete the printer files. If you are prompted to delete other software files associated with the printer, click **Yes**.
8. The printer's icon should now be removed from the **Printers** window.
9. Repeat Steps 6 and 7 for all Tektronix printers you have installed.
10. You can use the instructions in [Adding the Phaser 340 printer to the Windows 95 driver](#) to reinstall any Tektronix printers for Windows 95. PPD files for Phaser printers are available on the Phaser 340 CD-ROM and diskettes shipped with your printer.

## Adding the Phaser 340 printer to the Windows 95 driver

1. Start Windows 95.
2. Insert the Phaser 340 CD-ROM into your computer's CD-ROM drive, or insert the Printer Software for Windows diskette into your computer's disk drive.
3. Click the **Start** icon in the taskbar on your screen. In the menu that appears, click **Settings**.
4. In the menu that appears, click **Printers**; the **Printers** window appears.
5. In the **Printers** window, double-click **Add Printer**; the **Add Printer Wizard** appears. Click **Next**.
6. Select your printer's connection:
  - Select **Local Printer** if your printer is connected directly to your computer, then click **Next**.
  - Select **Network Printer** if you are accessing your printer through a network. Click **Browse** to search the network and select a printer queue. Then click **Next**.

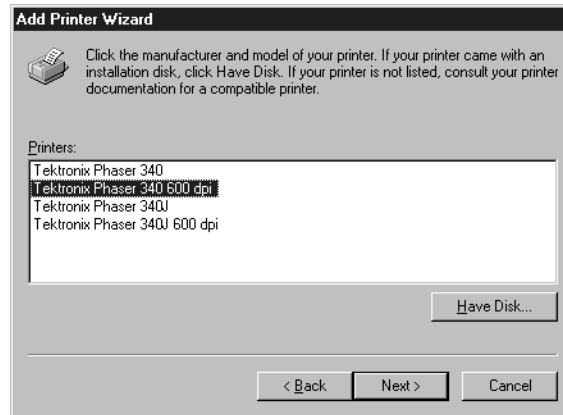
7. In the window listing **Manufacturers/Printers**, click **Have Disk**.



8. In the **Install From Disk** dialog box, type in the drive for the Phaser 340 CD-ROM or for the Printer Software for Windows diskette, and click **OK**.



9. A list of Tektronix printers appears. Select your printer in the list, then click **Next**.



- Select **Tektronix Phaser 340** if you have the standard version of the printer with 17 fonts.
- Select **Tektronix Phaser 340 600 dpi** if you have the printer's extended features option with 69 fonts.

**Note** *If you are not sure of the number of fonts installed in your printer, the printer's startup page lists the number of fonts installed.*

10. Select the port your printer is connected to, then click **Next**.
11. It is recommended that you use the default printer name shown under **Printer name**. Click **Yes** if you want this printer to be the default printer. Then click **Next**.
12. At the prompt, *Would you like to print a test page?* click **Yes** to verify the printer's connection, or click **NO**. Then click **Finish**.

A status bar appears while files are copied to your computer.

13. If prompted, select the path for the PostScript driver file *ICONLIB.DLL*; this should be in your *WINDOWS/SYSTEM* directory.

If the file isn't installed on your hard disk, do one of the following:

- Insert the Microsoft CD-ROM for Windows 95, select the *WIN95* directory, and click **OK**.
- Insert the requested Microsoft floppy diskette for Windows 95, select the drive, and click **OK**.

The software you need is installed.

14. If your printer is set up correctly, and you clicked **Yes** in Step 12, a test page prints showing the Windows 95 logo and information on your printer.

Your Phaser 340 printer is added to the **Printers** window.

## Using printer options in the Windows 95 driver

In the **Printers** window, click the **Phaser 340** printer icon with the right mouse button, then select **Properties** from the menu. Click the following tabs to see printing options; refer to your Windows 95 documentation for information on other tabs and options.

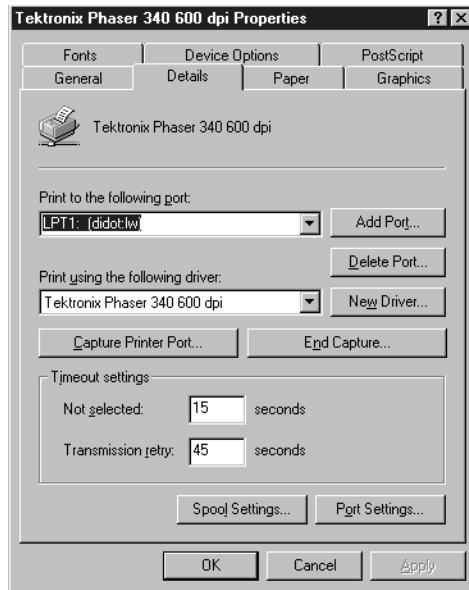
Click on the following topics for more information:

- [Details](#)
- [Paper](#)
- [Graphics](#)
- [Device Options](#)
- [PostScript](#)



## Details

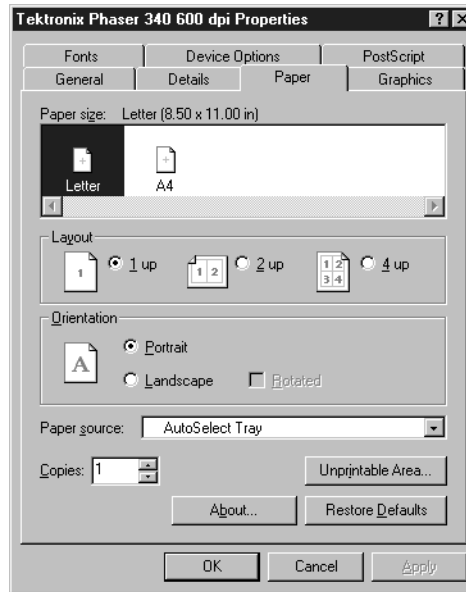
Click the **Details** tab to see the following options:



- Set the **Timeout settings**.
  - **Not Selected:** Type a value of **0**, or between **15** and **999**, in this text box to change the number of seconds Windows waits before notifying you that a printer is off-line. The default is **15** seconds.
  - **Transmission Retry:** On large or multiple-page documents you may see an Alert message that the printer is no longer accepting data before the job is completely sent to the printer. When using a shared printer, you should set this option to a larger value, such as **850** to avoid these unnecessary timeouts. Type a value between **45** and **850** in this text box; the default setting is **45** seconds.

## Paper

Click the **Paper** tab to see the following options:



- Select a media size in the **Paper size** field.

---

■ Letter (U.S.)	■ A4 (metric)
-----------------	---------------

---

- Select a media tray or media type in the **Paper source** field.

---

■ AutoSelect Tray
-------------------

---

■ Upper	■ Lower
---------	---------

---

■ Paper	■ Transparency
---------	----------------

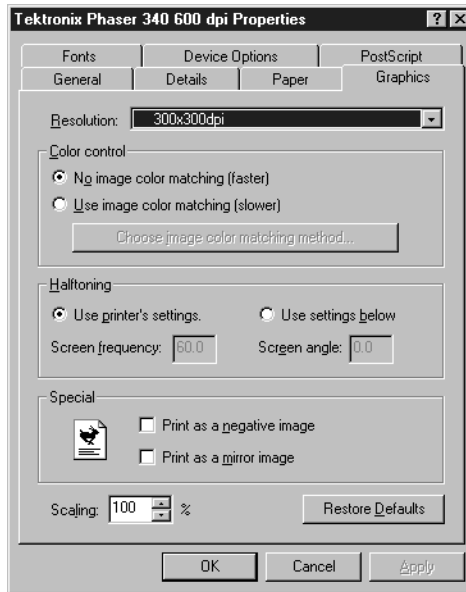
---

■ Manual Paper	■ Manual Transparency
----------------	-----------------------

---

## Graphics

Click the **Graphics** tab to see the following options:

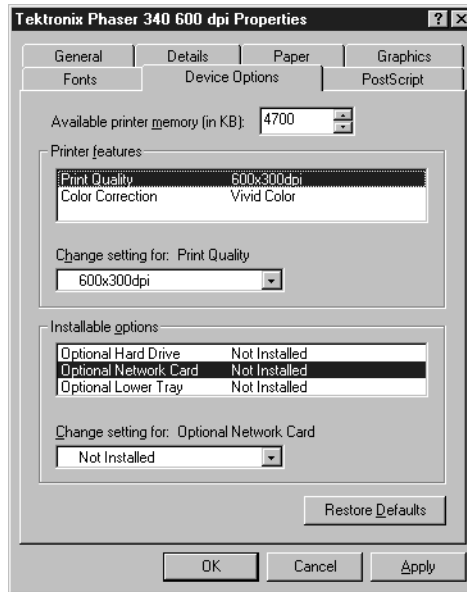


**Note** Use the **Print Quality** selections in the **Device Options** tab to select 300 x 300 dpi and 600 x 300 dpi options.

**Note** If you are using host color correction, you need to make selections in the **Graphics** and **Device Options** tabs.

## Device Options

Click the **Device Options** tab to see the following options:



- To select TekColor printer color corrections, follow these steps:
  - a. Highlight **Color Correction** in the **Printer features** field.
  - b. Select a color correction in the **Change setting for: Color Correction** field.

■ None	■ Vivid Color	■ Simulate Display
■ SWOP Press	■ Euroscale Press	■ Commercial Press
■ Monochrome	■ Use Printer Setting	

- To select print quality modes, follow these steps:
  - a. Highlight **Print Quality** in the **Printer features** field.
  - b. Select a print quality mode in the **Change setting for: Print Quality** field.

---

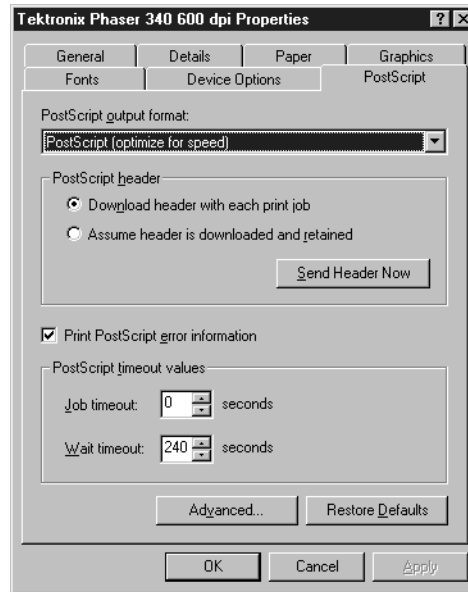
■ 300x300 dpi*	■ 600x300 dpi*
----------------	----------------

---

\* These options are available only with the printer's extended features option.

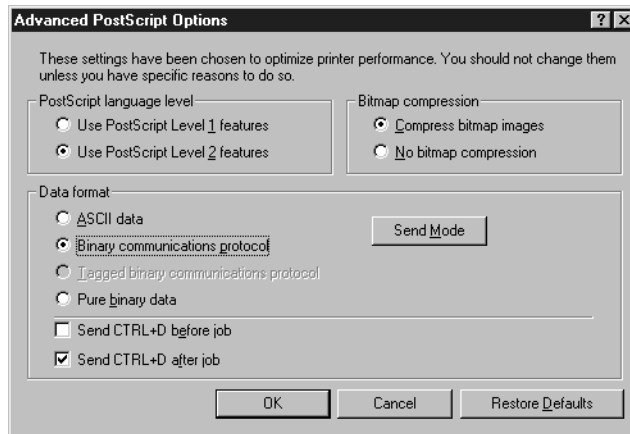
## PostScript

Click the **PostScript** tab to see the following options:



- The PostScript header contains important PostScript information that must accompany each print job; it is not a banner page printed with each job. If an option is not selected, an error message is displayed on your computer screen and your job does not print. Click one of the following in the **PostScript header** field:
  - Select **Download header with each print job**. This option downloads PostScript header information with each print job.
  - Click the **Send Header Now** button to save the PostScript header information in the printer, then select the **Assume header is downloaded and retained** option. This option makes print files a little smaller and faster than the first option, but you need to click the **Send Header Now** button every time the printer is turned off or reset.

- Click the **Advanced** button to see the following options.
- Select **Use PostScript Level 2 features**. Click **OK** when finished.



**Note** For faster printing, select **Binary communications protocol** under **Data format**.