

Using the Tektronix driver's options

Use the **Page Setup**, **Print**, and **TekColor Options** dialog boxes to select printing options.

Applications that use their own drivers

Some Macintosh applications, such as Aldus PageMaker 5.x, do not recognize settings made with the Tektronix driver. With PageMaker 5.x, it is best to use the LaserWriter 8.x printer driver configured with the version 4.x PPD PostScript Printer Description file for the Phaser 340.

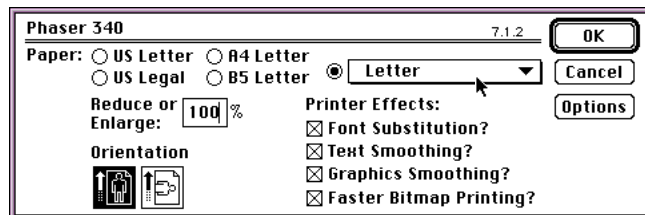
Extensions to the Print dialog box

Some applications add their own extensions to the Print dialog box. Refer to the application's documentation for information on extra options.

Making selections in the Page Setup dialog box

Choose **Page Setup** from the **File** menu to see the **Page Setup** dialog box. Make printer selections in the **Page Setup** dialog box as desired. Most options are standard LaserWriter driver options.

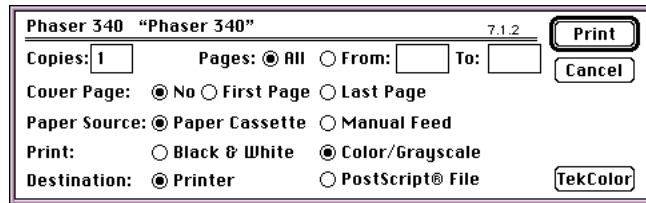
When selecting a **Paper** size, use the pop-up menu.



Making selections in the Print dialog box

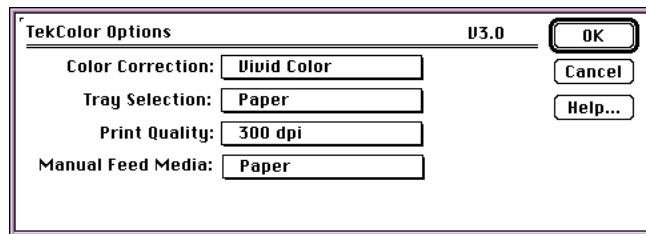
Choose **Print** from the **File** menu to see the **Print** dialog box. Make printer selections in the **Print** dialog box as desired. Most options are standard LaserWriter driver options.

Click the **TekColor** button to see the **TekColor Options** dialog box.



Making selections in the TekColor Options dialog box

Click the **TekColor** button in the **Print** dialog box to see the **TekColor Options** dialog box.



Make printer selections in the fields described in the following table.

TekColor Options dialog box options

Dialog box options	Option descriptions
Color Correction	Select one of the following options: <ul style="list-style-type: none">■ None■ Vivid Color*■ Simulate Display■ SWOP Press■ Euroscale Press■ Commercial Press■ Monochrome■ Use Printer Setting
Tray Selections	Select one of the following options when Paper Cassette is the selected Paper Source in the Print dialog box. <ul style="list-style-type: none">■ Upper■ Lower■ Paper*■ Transparency
Print Quality**	Select one of the following options: <ul style="list-style-type: none">■ 300 dpi*■ 600x300 dpi
Manual Feed Media	Select one of the following options when Manual Feed is the selected Paper Source in the Print dialog box. <ul style="list-style-type: none">■ Paper*■ Transparency

* These are the factory default settings.

** These options are available with the optional Plus configuration of the printer. See the *Phaser 340 Color Printer User Manual* for more information.