

Moving Your Printer

Waiting 30 minutes before moving

Before you move the printer, you'll want to wait for the printer to display the Ready message or the printer's network name, then turn off the printer using the rear-panel **On/Off** switch.

CAUTION



To avoid damaging the printer, let the printer cool down for at least 30 minutes before you move it so that the ink has time to solidify. Failure to wait 30 minutes will likely result in an ink spill that will damage the printer's internal components.

Removing the maintenance tray

- 1 Remove the maintenance tray from the printer, keeping it level. Remove, empty, and replace the waste tray.
- 2 Place the maintenance tray in a plastic bag and seal the bag.

The maintenance tray contains drum fluid that leaks if the tray is tipped. Keep the maintenance tray level and in a sealed plastic bag while transporting it.

C A U T I O N



To avoid damaging your printer and invalidating your printer's warranty, remove the maintenance tray before moving the printer. Always store a used maintenance tray in a leak-proof package. When handling the maintenance tray, keep it level. Never ship a partially used maintenance tray. Contact with the drum fluid poses no known health risk.

Locking the transit restraint

Refer to the following illustration while performing these steps.

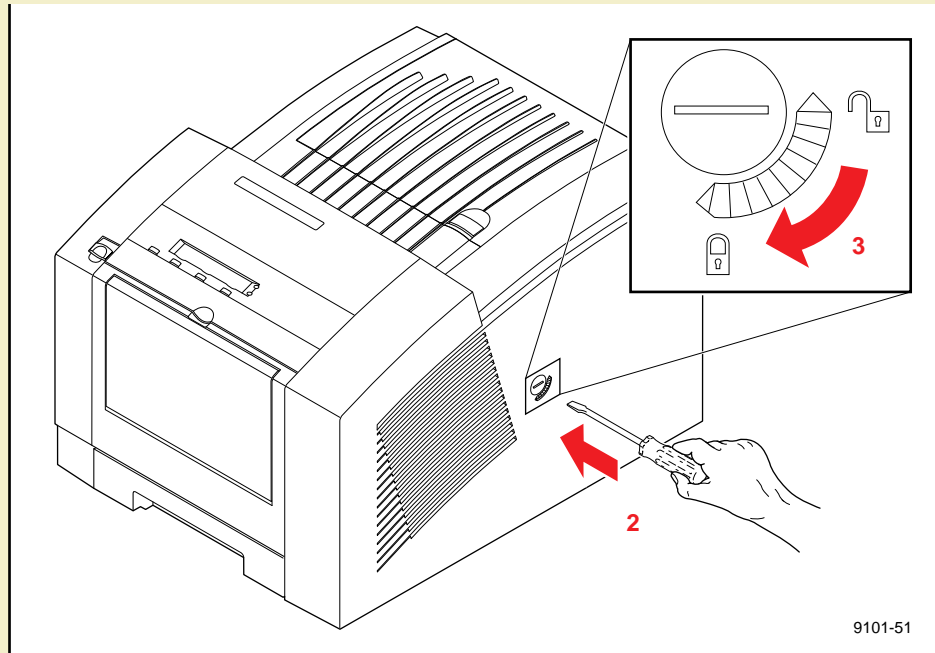
- 1 When the printer displays the Ready message or the printer's name, power it down using the rear-panel **On/Off** switch. The printer places the print head in the locking position.

C A U T I O N



To avoid damaging the printer's internal components, always turn the printer power off and lock the transit restraint before moving the printer. Failure to do so may result in damage to the printers' internal components and may invalidate your printer's warranty.

- 2** Locate the transit restraint on the right side of the printer and insert a wide flat-blade screwdriver into the transit restraint slot.



- 3** While pressing inward with medium pressure, turn the transit restraint slot in a *clockwise* direction to lock the printhead in position. The lock button is recessed from the side of the printer when fully engaged.