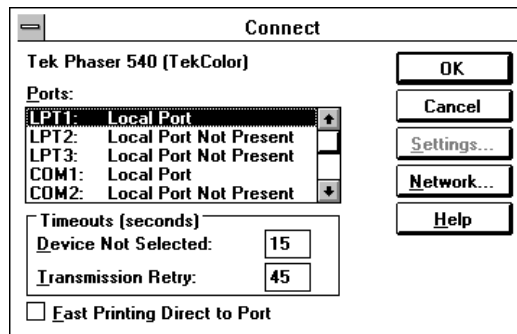


## Configuring the driver

1. The **Printers** dialog box should already be displayed; if not, open the **Control Panel** and double-click the **Printers** icon.
2. Select your printer from the list of installed printers.
3. Click the **Set As Default Printer** button if you want to select your printer as the default.
4. Click the **Connect** button to display the **Connect** dialog box.



5. Select the port that your printer is connected to.

Interface	Select	Then do the following
Parallel	<b>LPT1</b> or <b>LPT2</b>	Go to Step 6.
Serial	<b>COM1</b> or <b>COM2</b>	<ol style="list-style-type: none"><li>1. Click the <b>Settings</b> button to open the <b>Settings</b> dialog box.</li><li>2. Fill in each item based on your configuration, then click <b>OK</b>.</li><li>3. Refer to your Microsoft Windows documentation for details, or ask your network administrator for help.</li></ol>
Network	Network port ( <b>LPT</b> or <b>COM</b> )	<ol style="list-style-type: none"><li>1. Click the <b>Network</b> button to open the <b>Printers-Network Connections</b> dialog box.</li><li>2. Fill in each item based on your configuration, then click <b>OK</b>.</li><li>3. Refer to your Microsoft Windows documentation for details, or ask your network administrator for help.</li></ol>

The printer's configuration page contains the information you need to set up the printer's port.

**Note**    *You can use the **FILE:** port to send a PostScript document to a file instead of to the printer. For more information, see your Microsoft Windows documentation.*

6. Set the **Timeouts**. These options regulate your computer's communications with its printer ports.
  - **Device Not Selected**  
Type a value of **0**, or between **15** and **999**, in this text box to change the number of seconds Windows waits before notifying you that a printer is off-line. The default is **15** seconds.
  - **Transmission Retry**  
On large or multiple-page documents, you may see an alert message that the printer is no longer accepting data before the job is completely downloaded to the printer. When using the Print Manager with a shared printer, set this option to a larger value, such as **850**, to avoid these unnecessary timeouts. Type a value between **45** and **850** in this text box; the default value is **45** seconds.
7. Click **OK** to return to the **Printers** dialog box, then click the **Setup** button. A dialog box appears with the name of the printer you selected across the top. Use this dialog box to select the paper source, paper size, and image orientation.
8. Click the **Options** button to open the **Options** dialog box. Make sure that the **Color** box is checked to print in color.
9. From the **Options** dialog box, click the **Advanced** button to open the **Advanced Options** dialog box. Make sure the **Use PostScript Level 2 Features** check box is checked.

**Note**     *The **Use PostScript Level 2 Features** option affects the print time of bitmapped (raster) images by improving the image transfer time from the computer to the printer, and by improving the image processing time in the printer. This option is available only to applications that use this Tektronix driver with Tektronix PostScript Level 2 printers, such as the Phaser 540. When this box is checked, the **Compress Bitmaps** option is unavailable (grayed out).*

10. Click **OK** to return to the **Options** dialog box.
11. In the **Options** dialog box, click the **Printer Features** button to open the **Tektronix Printer Features** dialog box. Make color correction and print quality selections as desired. Click **OK** to return to the **Options** dialog box.
12. Click **OK** to return to the dialog box that lists your printer's name across the top.
13. Click **OK** to return to the **Printers** dialog box; then choose the **Close** button.

### If you are using PC/NFS

If you have PC/NFS software installed on your computer, you need to make the following selection in the **Network Options** dialog box:

1. Double-click the **Print Manager** icon in the **Main** window.
2. Select **Network Settings** from the **Options** menu in the **Print Manager**.
3. Uncheck the **Print Net Jobs Direct** box in the **Network Options** dialog box.
4. Click **OK**.