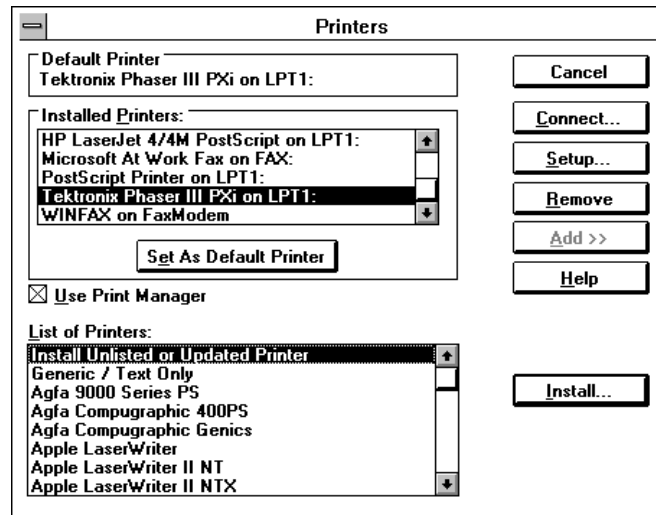


## Installing the driver

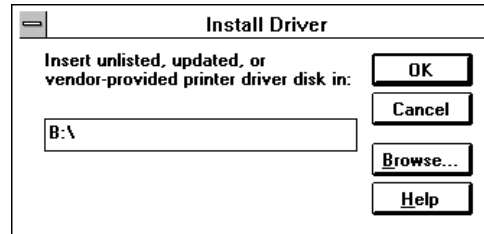
The Tektronix Windows driver is a Windows PostScript driver customized for Tektronix printers. These instructions assume a basic familiarity with Windows operation and terminology. For additional information about Windows, refer to your Microsoft Windows documentation.

1. Insert the Tektronix Windows 3.1 Driver and Printer Utilities diskette into your computer's disk drive; for example, drive **B:**.
2. Start Windows.
3. Open the **Control Panel**. Double-click on the **Printers** icon; the **Printers** dialog box appears.
4. Click the **Add>>** button.
5. In the **List of Printers**, select **Install Unlisted or Updated Printer**.

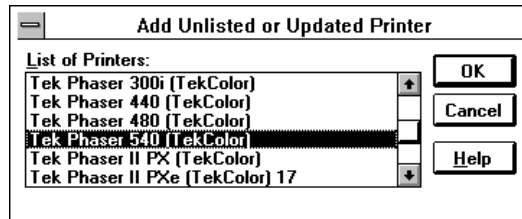


6. Click the **Install** button.

7. Type in the name of the drive containing the PC diskette (for example, drive B:) and choose **OK**.



8. Select your printer and click **OK**.



The driver software you need is automatically installed. Continue with the installation by configuring the driver.