

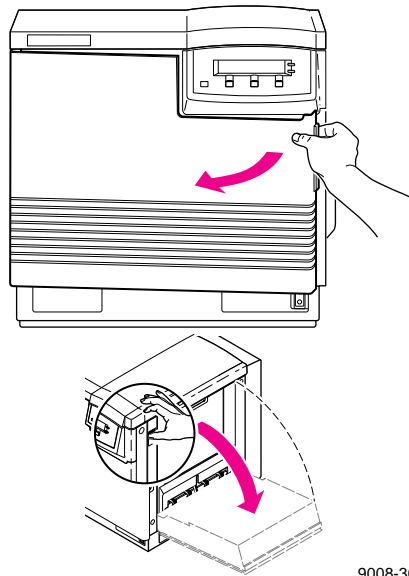
Replacing the fuser

Replace the fuser soon after the front panel reads **Fuser: replace** or immediately when the front panel reads: **Stopped: replace fuser!**.

Remove the used fuser

Leave the power *on* when you replace any of the components.

1. Open the front door *and* the right side door.



9008-30

2. Wait 10 minutes to allow the fuser to cool.

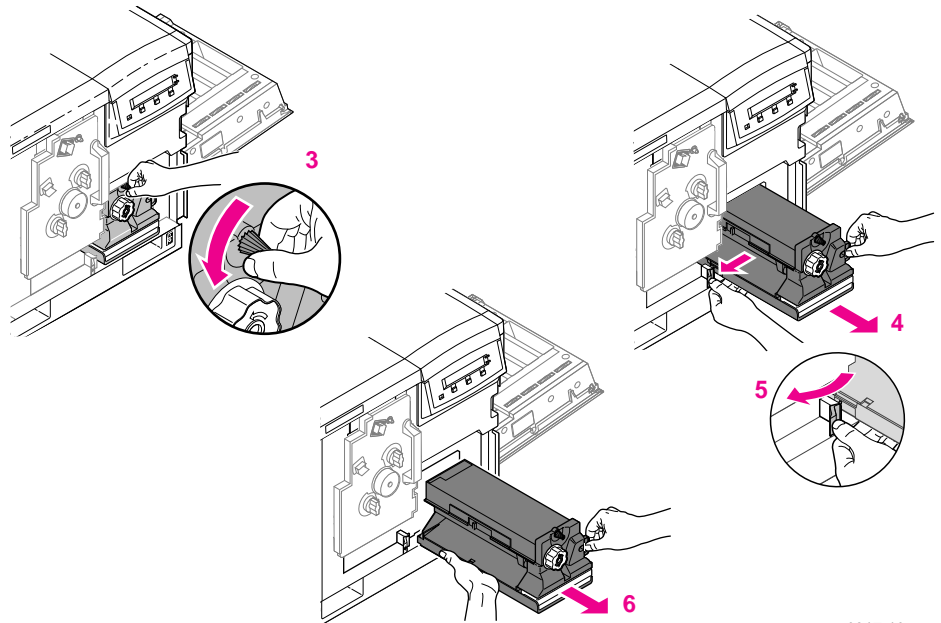
3. To unlock the fuser, turn the *small* blue screw that is above the large knob *counterclockwise* (about four turns) until it is loose.
4. Holding the blue tab on the right, pull the fuser until the safety catch stops it.
5. Press the blue lever to release the safety catch.

Caution *The fuser may be hot. Be careful not to touch the areas marked with this caution icon:*



The fuser weighs about 4.1 kg (9 lbs.); take care to handle the fuser as shown in the illustrations.

6. Slide the fuser out all the way, and dispose of it as normal office waste.

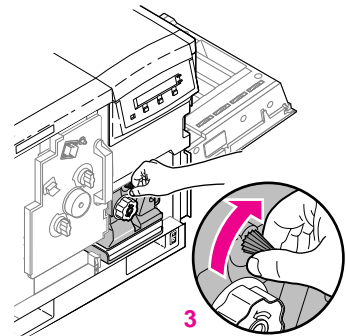
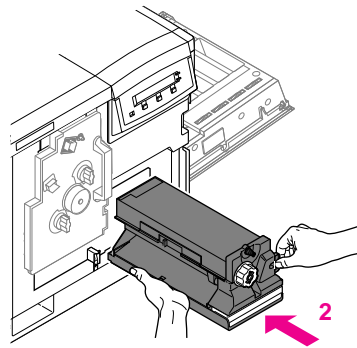


Insert the new fuser

1. Remove the new fuser from its packaging.

Note Save all packing material in case moving or subsequent shipment is necessary.

2. Using both hands, slide the new fuser into the printer. Push firmly to seat the fuser in place.
3. To lock the fuser, turn the *small* blue screw *clockwise* about four turns until it is tightened.



9317-20

4. Close the right side door and the front door.

Reset the copy count

When you close the front door after replacing the fuser, the front panel displays the following question:

New fuser?
No Yes

Press the **Yes** button, then the **Confirm** button to automatically reset the copy count.

Note *If you changed the fuser before the front panel reported a need to replace it, you will have to reset the copy count manually:*

- Press the **Menu** button to enter the menu.
- Navigate to the **Fuser Count** menu; press **Reset** and **Confirm** for the fuser.