

Replacing the imaging unit

Replace the imaging unit when the front panel reads
Imaging Unit: replace.

The kit consists of these items:

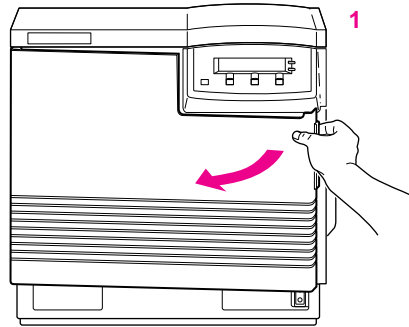
- Imaging unit
- Filter
- Blower/brush cleaning tool

Caution *When replacing the imaging unit, make sure that you do not expose either the new or used unit to light for more than 45 seconds. Place the used unit in a dark closet or empty box to protect it from the light. (When diagnosing a print quality symptom, you may replace the imaging unit and find it was not the solution, and then need to put the original unit back into the printer.)*

Remove the used imaging unit

Leave the power *on* when you replace any of the components.

1. Open the front door.

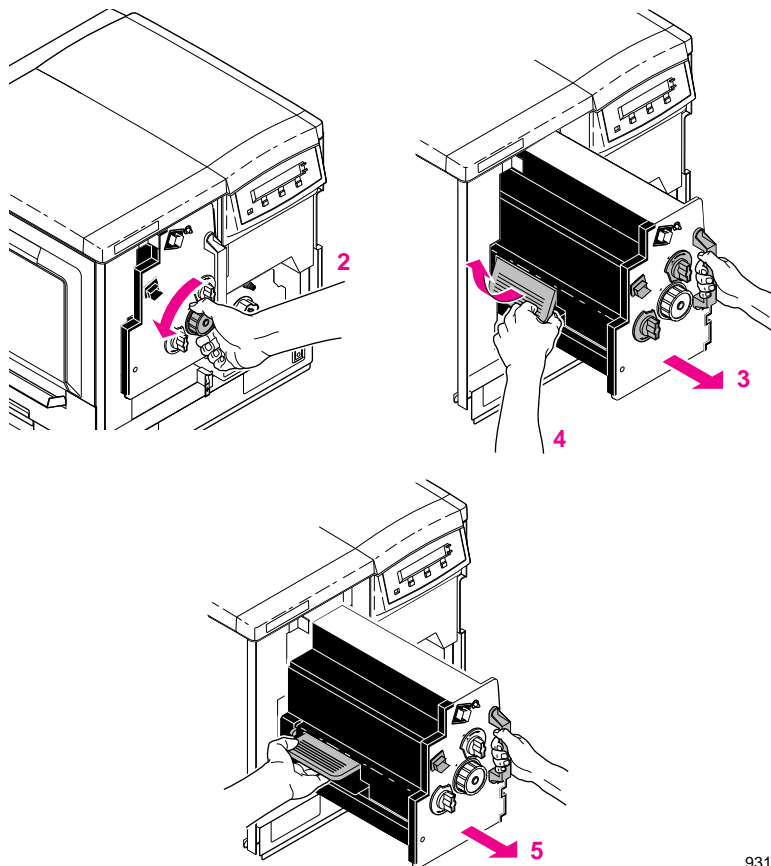


9317-14

2. To unlock the imaging unit, turn the large blue knob *counterclockwise*.
3. Holding the blue front handle, pull out the imaging unit until it stops.
4. Lift up the blue handle to the left of the imaging unit to release the catch.

Caution *The imaging unit weighs about 5.9 kg (13 lbs.); take care to handle the imaging unit as shown to avoid damage to the unit and personal injury.*

5. Slide the imaging unit out all the way; cover it completely to prevent damage from exposure to light, and set it aside.



Unpack the new imaging unit

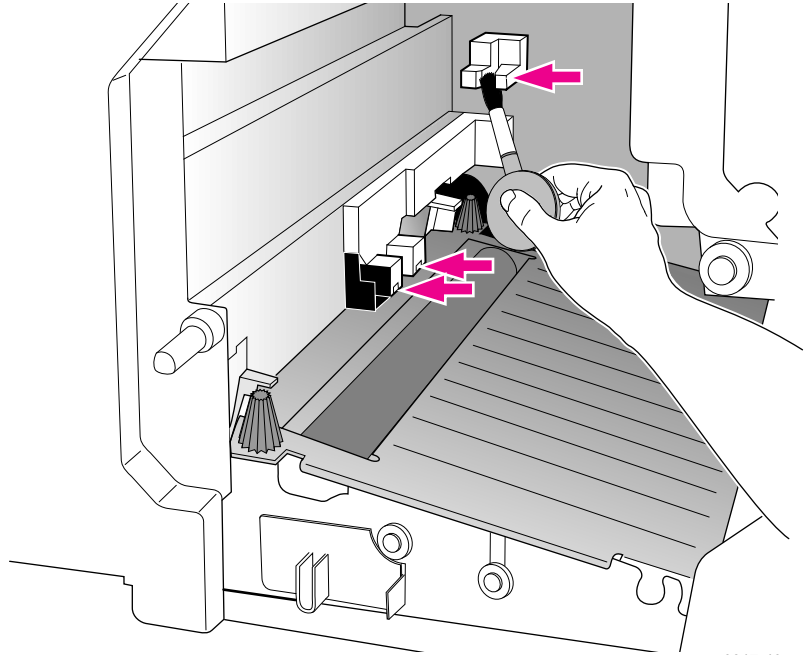
1. Remove the contents from the packaging, but leave the protective plastic sheet on the imaging unit until you insert it into the printer.
2. Save all packing material in case moving or subsequent shipment is necessary.

Caution *To ensure print quality, do not touch the underside or the right side of the imaging unit; you may see fingerprints on your output.*

Never allow exposure to direct sunlight, which can cause permanent damage in only a few seconds. Do not leave the imaging unit exposed to any light for more than 45 seconds. If you do, the unit may be damaged and need to be replaced. When installing it, leave the protective cover on until immediately before you insert it into the printer; then, promptly close the front door.

Clean the sensors

1. Using the blower/brush cleaning tool that was included in the imaging unit packaging, clean the three sensors inside the printer.

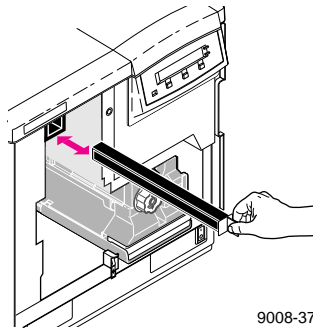


9317-49

Replace the filter

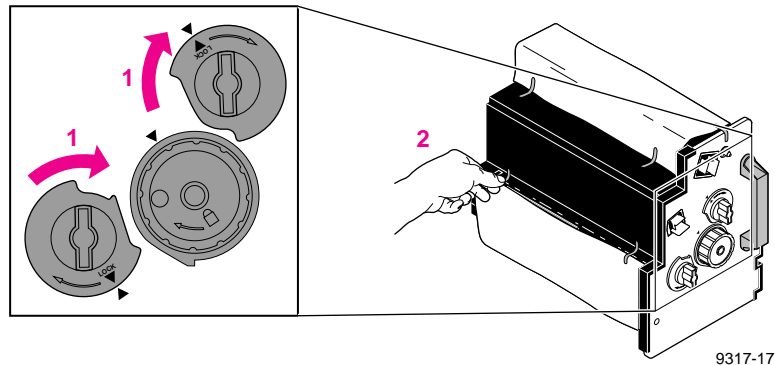
1. Pull out the used filter and dispose of it as normal office waste.

2. Insert the new filter.

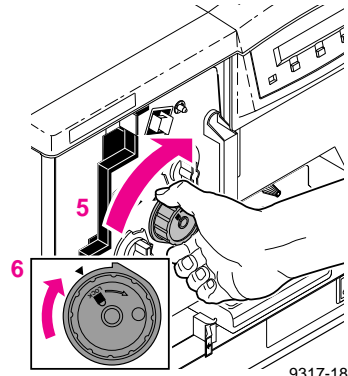
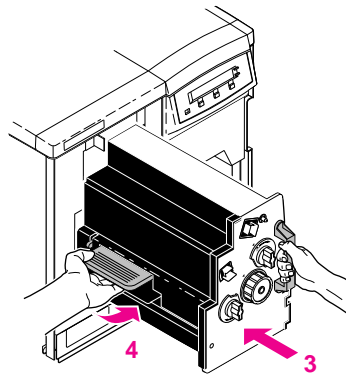


Insert the new imaging unit

1. Turn the two small blue knobs *clockwise* to align the triangles.
2. Remove the tape from the protective plastic sheet; then remove the sheet from the imaging unit.



3. Insert the new imaging unit into the printer, holding it by the blue handles.
4. Release the left handle and slide the unit in until it stops.
5. Turn the large blue knob *clockwise* to insert the imaging unit completely and to lock it.
6. When properly installed, the lock icon aligns with the triangle.
7. Close the front door.



Reset the copy count

When you close the front door after replacing the imaging unit, the front panel displays the following question:

New imaging unit?
No Yes

Press the **Yes** button, then the **Confirm** button to automatically reset the copy count.

Note *If you changed the imaging unit before the front panel reported a need to replace it, you will have to reset the copy count manually:*

- Press the **Menu** button to enter the menu.
- Navigate to the **Imaging Unit count** in the **System Counts** menu; press **Reset** and **Confirm** for the imaging unit.

What to do with the used imaging unit

Once you determine that the new imaging unit takes care of whatever print-quality symptom you observed, dispose of the used imaging unit as normal office waste.