

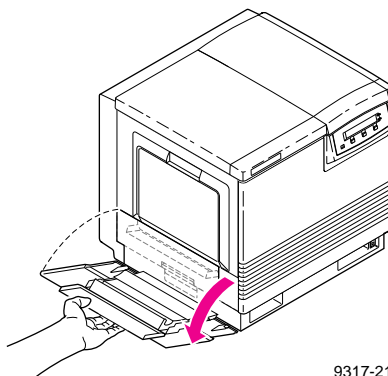
Replacing the transfer kit

Replace the transfer kit (consisting of the transfer roller and the waste bin) when the front panel reads **Transfer Kit: replace.**

Remove the used transfer roller

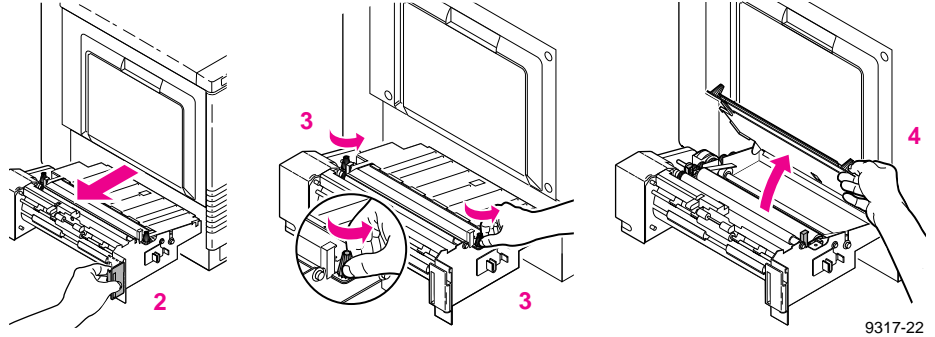
Leave the power *on* when you replace any of the components.

1. Open the left side door. (If you have an optional Lower Tray Assembly, open the upper of the two left side doors).

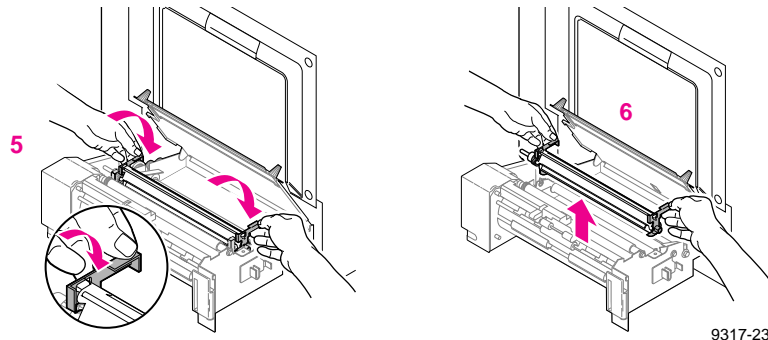


9317-21

2. Use the blue handle to pull out the paper feeder.
3. Turn the blue screws *counterclockwise* about four turns to unlock the cover.
4. Lift the cover until it catches and stays open.



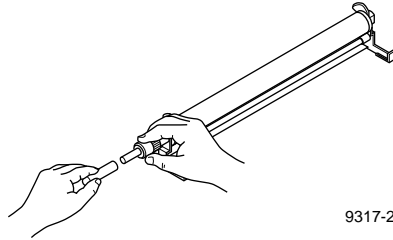
5. Hold the transfer roller by its blue handles; rotate the handles toward the printer.
6. Lift out the used transfer roller and dispose of it as normal office waste.



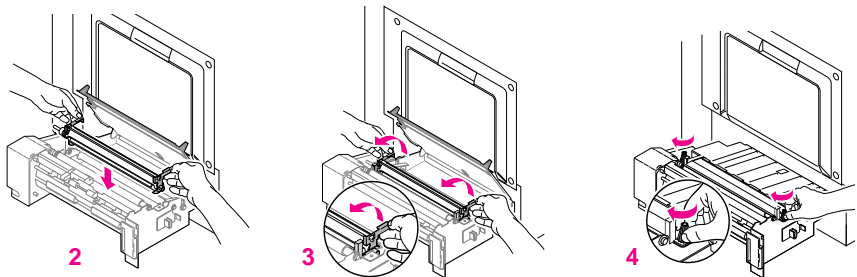
Insert the new transfer roller

1. Remove the plastic cover from the new roller.

Caution *Take care when removing the plastic cover because the tip of the transfer roller is coated with a lubricant that can be difficult to remove from hands or clothing.*

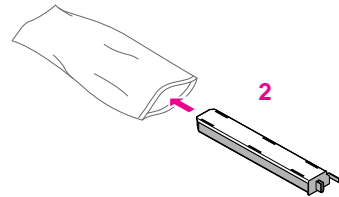
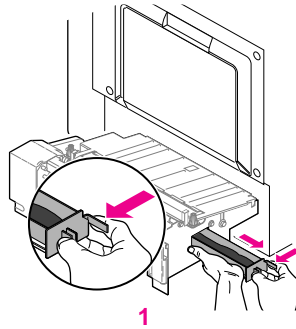


2. Holding the new transfer roller by its blue handles, place the roller into the paper feeder.
3. Rotate the handles away from the printer to seat the roller securely.
4. Close the cover and tighten the two blue screws (*clockwise*).



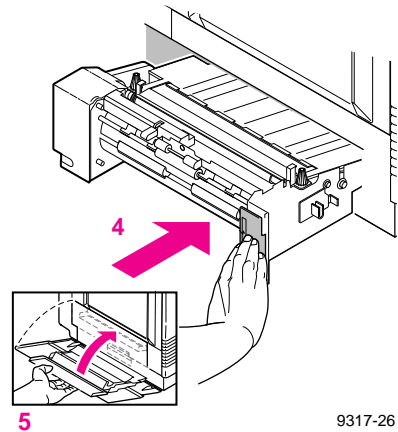
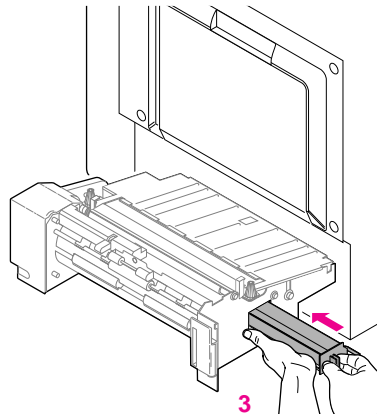
Replace the waste bin

1. With the paper feeder still out, pinch the waste bin's handle; press the safety catch to release it and remove the waste bin.
2. Place the used waste bin in the plastic bag provided in the kit; *close the plastic bag securely* and dispose of it as normal office waste.



9008-27

3. Insert the new waste bin.
4. Slide the paper feeder back into the printer.
5. Close the left side door.



9317-26

Reset the copy count

When you close the door after replacing the transfer kit, the front panel displays the following question:

New transfer kit?
No Yes

Press the **Yes** button, then the **Confirm** button to automatically reset the copy count.

- Note** *If you changed the transfer kit before the front panel reported a need to replace it, you will have to reset the copy count manually:*
- Press the **Menu** button to enter the menu.
 - Navigate to the **Transfer Kit count** menu; press **Reset** and **Confirm** for the transfer kit.