

# Using the Phaser 550 GX driver

If you are using Apple Macintosh QuickDraw GX and System Software 7.5 or later, use the Phaser 550 GX driver to print to your Phaser 550 printer.

Click on the following topics for more information:

- [Overview](#)
- [System requirements](#)
- [Installing the Phaser 550 GX printer driver](#)
- [Creating a desktop printer](#)
- [Setting up unique desktop printers](#)
- [Printing with a desktop printer](#)
- [Using the Printing menu](#)
- [Setting up a shared printer](#)
- [Using a shared printer](#)
- [Printing from QuickDraw GX applications](#)
- [Printing from non-QuickDraw GX applications](#)
- [Viewing printer status](#)
- [Disabling QuickDraw GX](#)

## Overview

- The Phaser 550 GX driver works with QuickDraw GX and non-QuickDraw GX applications.
- QuickDraw GX does not work with non-QuickDraw GX printer drivers. If you want to print from non-QuickDraw GX applications with a driver such as the LaserWriter 8.x, you must first disable QuickDraw GX; see [Viewing printer status](#) for instructions.

## System requirements

**Note** *You must have an optional PhaserShare card installed in the printer before using the installed software.*

The Tektronix Phaser 550 GX printer driver requires the following hardware and software:

- An Apple Macintosh II computer, or later
- At least 8 Mbytes of RAM
- QuickDraw GX and System Software version 7.5 or later

## Installing the Phaser 550 GX printer driver

Follow the instructions in [Using the Installer](#) to install the *Phaser 550 GX* printer driver. Select one of the standard options to automatically install all of the printer's software, or select the **Phaser 550 GX printer driver** option. The driver is only installed if you are running QuickDraw GX on your Macintosh.

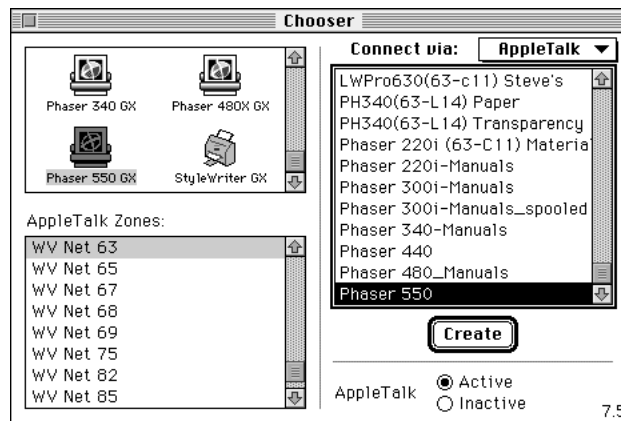
Then, go on to [Creating a desktop printer](#) for instructions on creating a desktop printer.

## Creating a desktop printer

QuickDraw GX requires you to create desktop printers for printing. Depending on the type of application you are using, printing is as easy as dragging a document onto a desktop printer icon.

**Note** *If you want to rename the printer listed in the **Chooser**, do so before creating any desktop printers. If you rename the printer in the **Chooser**, any desktop printers referring to that printer will not work, and must be removed to the Trash and recreated. Use the LaserWriter Utility to rename the printer.*

1. Select **Chooser** from the **Apple** menu.



2. Click the **Phaser 550 GX** printer driver icon on the left side of the **Chooser**. A list appears with the printers available on your network. (If the printer driver icon does not appear, **Restart** your Macintosh, and repeat the printer driver installation procedure; also check the cable connections on your computer and printer.)

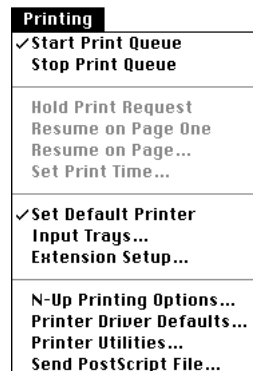
3. In the **Connect via** field's pop-up menu, select your printer's communication method:
  - The **AppleTalk** option is the standard network connection.
  - The **Servers** option is used to select a shared desktop printer; see [Setting up a shared printer](#) for details.
4. Click on your Phaser 550 printer in the list of printers on the right side of the **Chooser**.
5. Click the **Create** button to create a desktop printer. An icon of the printer appears on the desktop with the same name as the printer selected in the Chooser.
6. Close the **Chooser** by clicking its close box.

## Setting up unique desktop printers

You can create more than one desktop printer of the same physical printer. Each desktop printer can be set up with different print modes or options and given a descriptive name. This feature makes it easy to print to a specific printer with the options you want already selected. In the illustration below, a desktop printer has been created of a Phaser 550 printer with the Vivid Color color correction and the Paper media type selections.



1. Create a desktop printer according to instructions in [Creating a desktop printer](#).
2. Select (highlight) a desktop printer icon.  
The **Printing** menu appears in the menu bar at the top of the Macintosh screen.



3. Use the **Printer Driver Defaults** command in the **Printing** menu to select options for desktop printers; see [Selecting printing options](#) for details.
4. To rename the desktop printer, highlight the icon on the desktop and type a new name. Renaming a desktop printer has no effect on the printer's name in the **Chooser**.



## Printing with a desktop printer

If you are using QuickDraw GX applications, do one of the following:

- Select any desktop printer in the **Print** dialog box.
- Drag a document onto a desktop printer icon. The application corresponding to the document opens, prints the document, and then quits.

If you are using non-QuickDraw GX applications, do one of the following:

- Print to the *default* desktop printer with the **Print** command from the **File** menu.
- Drag a document onto a desktop printer icon. The application corresponding to the document opens, displays the **Print** dialog box, and waits for you to click **Print**. After printing the document, the application quits.

## Using the Printing menu

Most of the commands in the **Printing** menu are standard QuickDraw GX driver commands, and are documented by Apple (see the *Macintosh Guide* on-line document for details). The last group of commands in this menu are printer-specific.

Printing
✓ Start Print Queue Stop Print Queue
Hold Print Request Resume on Page One Resume on Page... Set Print Time...
✓ Set Default Printer Input Trays... Extension Setup...
N-Up Printing Options... Printer Driver Defaults... Printer Utilities... Send PostScript File...

## Control printing

Use the **Start Print Queue** and **Stop Print Queue** commands in the **Printing** menu to control the print queues on individual desktop printers.

1. Select (highlight) a desktop printer icon.
2. From the **Printing** menu, select either **Start Print Queue** or **Stop Print Queue**.

## Designating a default desktop printer

1. Select (highlight) a desktop printer icon.



2. From the **Printing** menu, select **Set Default Printer**.  
A check-mark appears next to the command, and a bold outline appears around the desktop printer icon.



## Controlling the printer's paper trays

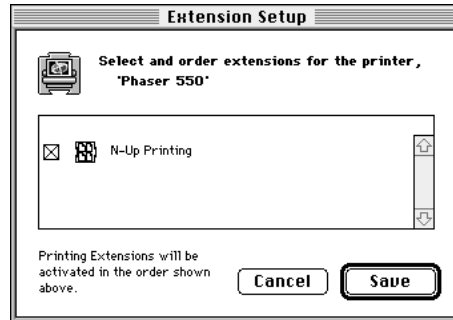
If you select the **Input Trays** command in the **Printing** menu, the following message appears:

*Please use the Printer Driver Defaults command to specify media options for this printer.*

Click **OK** to continue, then use the **Printer Driver Defaults** command in the **Printing** menu to select media trays.

## Using printing extensions

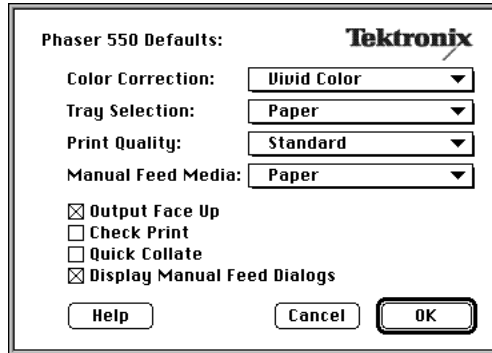
Use the **Extension Setup** command in the **Printing** menu to specify which third-party printing extensions you want enabled for the currently selected desktop printer. By default, all printing extensions are enabled.



1. Select (highlight) a desktop printer icon.
2. Select **Extension Setup** from the **Printing** menu.
3. Make selections as desired.
4. Click **Save**.

## Selecting printing options

Use the **Printer Driver Defaults** command in the **Printing** menu to set default options for the selected desktop printer. This dialog box includes such options as the color corrections, tray selections, and print quality modes.



**Note** *The printer defaults dialog box is also available through the **Print** command in the **File** menu for QuickDraw GX applications.*

## Phaser 550 printer options

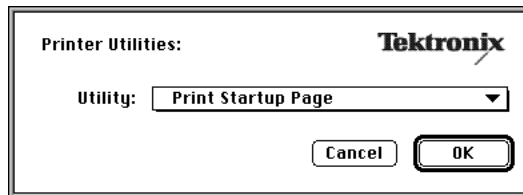
Phaser 550 Defaults	Options
Color Correction	<ul style="list-style-type: none"><li>■ None</li><li>■ Vivid Color</li><li>■ Simulate Display</li><li>■ SWOP Press</li><li>■ Euroscale Press</li><li>■ Commercial Press</li><li>■ Monochrome</li><li>■ Use Printer Setting</li></ul>
Tray Selection	<ul style="list-style-type: none"><li>■ Upper Tray</li><li>■ Middle Tray</li><li>■ Lower Tray</li><li>■ Paper</li><li>■ Transparency</li></ul>
Print Quality	<ul style="list-style-type: none"><li>■ Fast Color</li><li>■ Standard</li><li>■ Enhanced*</li><li>■ Premium*</li></ul>
Manual Feed Media	<ul style="list-style-type: none"><li>■ Paper</li><li>■ Transparency</li></ul>
Output Face Up	Check box <b>on</b> to print your document face up.
Check Print*	Check box <b>on</b> to print only the first page of a document before continuing with a multiple-page document.
Quick Collate*	Check box <b>on</b> to perform collation in the printer.
Display Manual Feed Dialogs	Check box <b>on</b> to see a dialog box confirming each page you want to print with manual feed. If you check this box <b>on</b> , then go to the <b>Print</b> dialog box to select <b>Use Manual Feed</b> .

\*These options are available with the printer's extended features option.  
See the *Phaser 550 Color Printer User Manual* for more information.

## Downloading printer utilities

Use the **Printer Utilities** command in the **Printing** menu to download printer utility files to the selected desktop printer. This command cannot be used on a shared printer, except by the Macintosh hosting the shared printer.

1. Select (highlight) a desktop printer icon.
2. Select **Printer Utilities** from the **Printing** menu.
3. In the **Utility** pop-up menu, select the utility you want downloaded to the printer, then click **OK**. See [Printer utilities](#) for a list of utilities available in this dialog box.



4. If you see an alert message, click **OK** or **Cancel** as desired.

The utilities in the following table can be downloaded to the printer with the **Printer Utilities** command from the **Printing** menu.

### Printer utilities

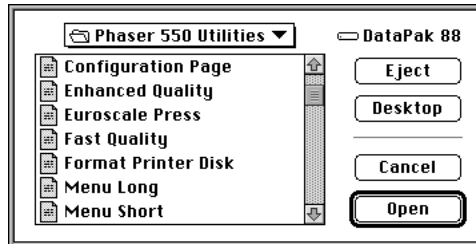
Utilities	
■ Print Startup Page	■ Print Configuration Page
■ Disable Startup Page	■ Enable Startup Page
■ Disable SysStart Job	■ Enable SysStart Job
■ Download Tek Error Handler	
■ Disable Setscreen	■ Enable Setscreen
■ Initialize Printer Disks	■ Format Printer Disks
■ Reset Printer	
■ Use Lower Tray	■ Use Upper Tray
■ Use Middle Tray	■ Use Any Tray
■ Use Fast Color Quality	■ Use Enhanced Quality*
■ Use Standard Quality	■ Use Premium Quality*
■ Enable No Color Corrections	■ Enable SWOP Press
■ Enable Vivid Color	■ Enable Monochrome
■ Enable Simulate Display	■ Enable Raw RGB Colors
■ Enable Commercial Press	■ Enable Raw CMYK Colors
■ Enable Euroscale Press	
■ Disable Job Pipelining*	■ Enable Job Pipelining*
■ Print CMYK Sampler	■ Print Fonts Sampler
■ Print RGB Sampler	■ Print PANTONE Sampler
■ Print HSB Sampler	

\* These utilities are for use with the printer's extended features option only.



## Download PostScript files

Use the **Send PostScript File** command in the **Printing** menu to download PostScript files to the selected desktop printer. For example, use this command to download the utility files included on the CD-ROM and diskettes shipped with the printer. This command cannot be used on a shared printer, except by the Macintosh hosting the shared printer.



1. Select (highlight) a desktop printer icon.
2. Select **Send PostScript File** from the **Printing** menu.
3. Select the PostScript file you want to download.
4. Click **Open** to send the file to the printer.

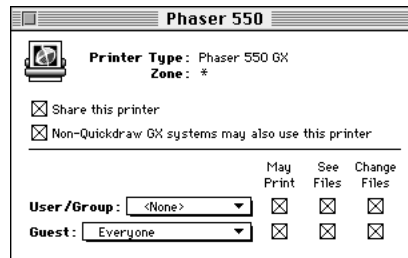
## Setting up a shared printer

You can share a desktop printer in the same way you share files, folders, or volumes, with the **Sharing** command in the **File** menu. Both the host and client computers must have a copy of the same printer driver.

1. Create a desktop printer according to instructions in [Creating a desktop printer](#).
2. Highlight the desktop printer icon you want to share.



3. Select **Sharing** from the **File** menu.
4. Click the check box to turn on **Share this printer**.



5. Click the close box.
6. At the alert message, click **Save**.
7. The desktop printer's icon changes to reflect the change in status to a shared printer.



## Using a shared printer

If you want to use a printer hosted by another user's computer, do the following:

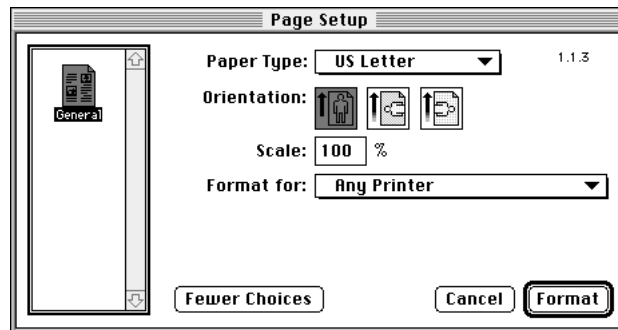
1. Open the **Chooser** from the **Apple** menu.
2. Click the **Phaser 550 GX** printer driver icon on the left side of the **Chooser**.
3. In the **Connect via** field's pop-up menu, select **Servers**.
4. The list of printers in the **Chooser** changes to show only shared printers. Click on the shared printer you want to use.
5. Close the **Chooser**.

## Printing from QuickDraw GX applications

Use the following dialog boxes if you are using QuickDraw GX applications with the Phaser 550 GX driver.

### Using the Page Setup dialog box

Select **Page Setup** from the **File** menu, then click the **More Choices** button to see the following dialog box:



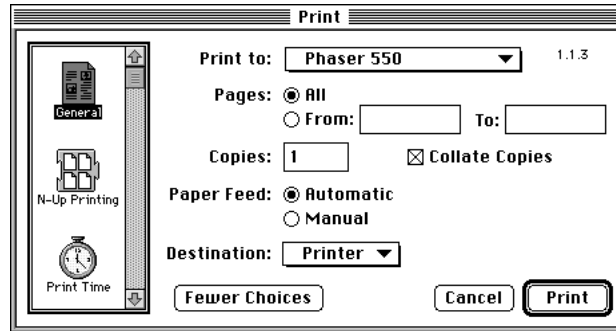
- **Row of icons:** The scrollable icon list on the left side of the dialog box shows the printing extensions that are available to the printer driver. When selected, the **General** icon displays the normal **Page Setup** options. Select another icon to see a new set of options.

Refer to Apple's QuickDraw GX documentation for instructions on installing printing extensions; refer to [Using printing extensions](#) to use the **Extensions Setup** command in the **Printing** menu to enable installed printing extensions.

- **Paper Type:** This is a list of page sizes available for the selected printer.
- **Orientation and Scale:** These are standard driver options described in Apple's documentation.
- **Format for:** This pop-up menu allows you to select a different desktop printer for formatting your document.

## Using the Print dialog box

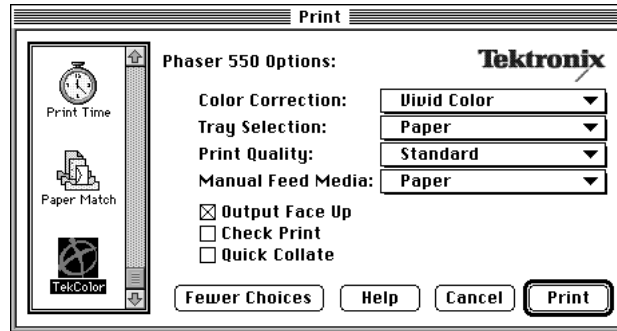
Select **Print** from the **File** menu, then click the **More Choices** button to see the following dialog box:



- **Row of icons:** The scrollable icon list on the left side of the dialog box shows the printing extensions that are available to the printer driver. When selected, the **General** icon displays the normal **Print** options. Select another icon to see a new set of options. **Print Time** and **Paper Match** are part of the QuickDraw GX software and are always available.
- The rest of the options in this dialog box are standard driver options described in Apple's documentation.
- **Paper Feed: Automatic or Manual**  
When printing on manually fed media, you need to select **Manual** in this dialog box, *and* select the appropriate **Manual Feed Media** option in the **TekColor** printing extension described in [Using the TekColor printing extension](#).

## Using the TekColor printing extension

In the **Print** dialog box, select the **TekColor** icon in the scrollable list at the left of the dialog box to see printer options:



**Note** *This dialog box is similar to the one that appears when you select **Printer Driver Defaults** from the **Printing** menu; refer to [Selecting printing options](#) for details.*

The default settings in this dialog box reflect the defaults for the selected desktop printer. With most applications, you can change the printing options and save those options with each document.

## Using the Paper Match printing extension

In the **Print** dialog box, the Paper Match printing extension lets you specify paper trays. A paper tray selection in the **Paper Match** printing extension overrides the tray selection choice in the **TekColor** printing extension. For best results, you should use the **TekColor** printing extension for selecting *all* printing options.

## Printing from non-QuickDraw GX applications

If you are using non-QuickDraw GX applications with the Phaser 550 GX driver, the **Page Setup** and **Print** dialog boxes look similar to the standard LaserWriter driver. However, these dialog boxes have no printer-specific options, such as TekColor color corrections. These dialog boxes reflect the selections made in the default desktop printer. You cannot change these printer settings from an application, but you can change them by selecting (highlighting) the default desktop printer and using the **Printer Driver Defaults** command in the **Printing** menu.

You can also change the default desktop printer before you change printing selections. To change the default desktop printer, see [Designating a default desktop printer](#).

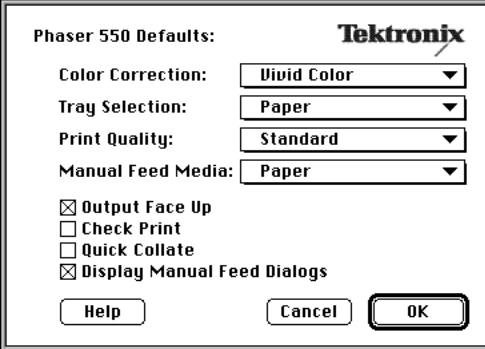
### Changing a desktop printer's default selections

1. Click to highlight the default desktop printer.





2. From the **Printing** menu, select **Printer Driver Defaults**. The following dialog box appears:



The image shows a dialog box titled "Phaser 550 Defaults:" with the Tektronix logo in the top right corner. The dialog contains four dropdown menus: "Color Correction" set to "Vivid Color", "Tray Selection" set to "Paper", "Print Quality" set to "Standard", and "Manual Feed Media" set to "Paper". Below these are four checkboxes: "Output Face Up" (checked), "Check Print" (unchecked), "Quick Collate" (unchecked), and "Display Manual Feed Dialogs" (checked). At the bottom are three buttons: "Help", "Cancel", and "OK".

Phaser 550 Defaults: <b>Tektronix</b>	
Color Correction:	Vivid Color ▼
Tray Selection:	Paper ▼
Print Quality:	Standard ▼
Manual Feed Media:	Paper ▼
<input checked="" type="checkbox"/> Output Face Up	
<input type="checkbox"/> Check Print	
<input type="checkbox"/> Quick Collate	
<input checked="" type="checkbox"/> Display Manual Feed Dialogs	
Help      Cancel      OK	

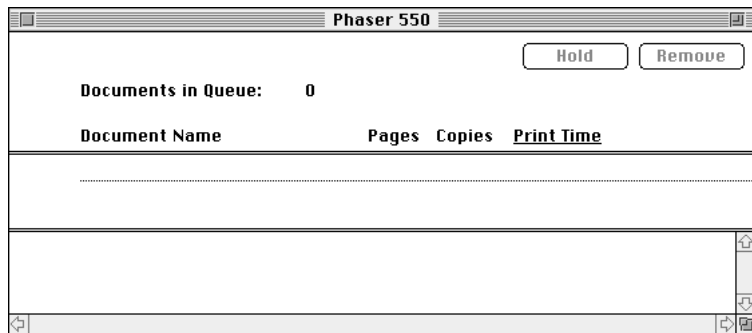
3. Make desired printer selections, then click **OK** and return to your application.

## Viewing printer status

Once you send a print job to a desktop printer, you can monitor the status of the print job in the **Printer Status** dialog box.

There are two ways to open the **Printer Status** dialog box:

- Select (highlight) the appropriate desktop printer icon, then select **Open** from the **File** menu.
- Double-click the appropriate desktop printer icon.



## Disabling QuickDraw GX

You may want to disable QuickDraw GX when printing from some non-QuickDraw GX applications so you can use a driver such as the LaserWriter 8.x driver.

There are two ways to disable QuickDraw GX:

### Method 1

1. Open the **Extensions** folder inside the **System Folder**.
2. Drag the **QuickDraw™ GX** extension onto the desktop.
3. Select **Restart** from the **Special** menu.

### Method 2

1. Select **Extensions Manager** in the **Control Panel**.
2. Click to disable all QuickDraw GX entries, such as **QuickDraw GX** and **QuickDraw Helper**.
3. Select **Restart** from the **Special** menu.

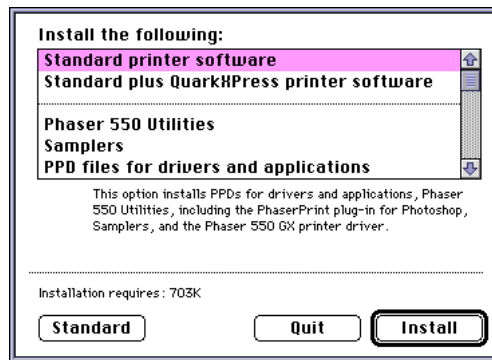
Any desktop printers created before you disabled QuickDraw GX will have an “X” drawn through their icons. These desktop printers remain unavailable for use until QuickDraw GX is re-enabled.

**Note** *During installation, QuickDraw GX altered the Fonts folder inside your System Folder. If you disable QuickDraw GX, you may need to reinstall some fonts.*

## Using the Installer

To install the printer's software, follow this procedure:

1. Disable virus detection software before starting the *Installer* application. Either refer to the virus software's documentation for instructions, or **Restart** the Macintosh while holding down the **Shift** key to start the computer with extensions off.
2. Use either the Phaser 550 diskettes or CD-ROM.
  - **Floppy diskettes:** Insert the Printer Software for the Macintosh diskette into your computer's disk drive.
  - **CD-ROM:** Insert the Phaser 550 CD-ROM into your computer's CD-ROM drive.
3. Double-click the **Phaser 550 Installer** icon. Click **Continue** until the following dialog box appears:



4. Select one of the standard options or select individual options; **Command**-click to select more than one item. Then click **Install**.

5. If you click the **Standard** button, the following dialog box appears. This option installs the **Standard printer software**.

