

Using host color correction

Note *Host color correction is available only with Windows 95.*

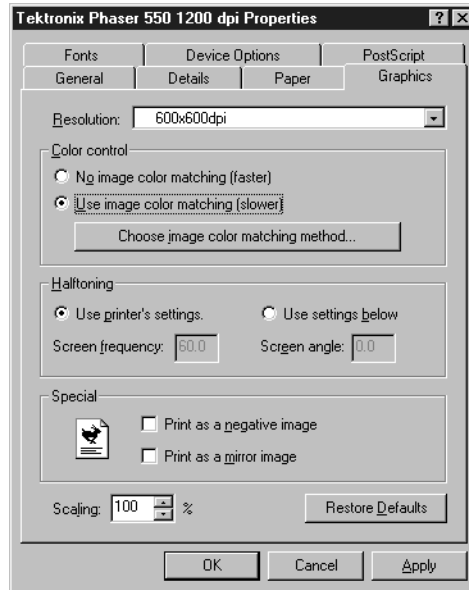
Color correction from the host (your computer) attempts to match the screen's colors to the printer's colors. The software for the Phaser 550 printer includes a profile that contains specific color information required by the host color correction system.

You can adjust an image's colors on the computer, or use the TekColor color corrections to adjust an image's colors in the printer. You should use only one color correction method at a time, or you may get unexpected results.

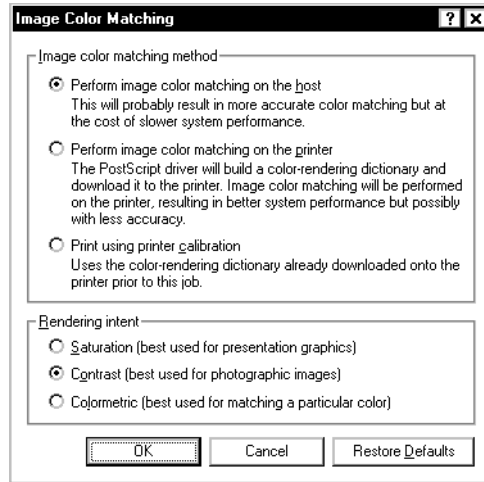
To use host color correction, do the following:

1. Follow the instructions in [Installing the files](#) to install the printer's software. The printer profile and the PPD file are both automatically installed.
2. In the **Printers** window, move the cursor over the Phaser 550 printer icon, and click the right mouse button.
3. In the menu that appears, click **Properties**; the **Properties** dialog box appears.
4. Click the **Graphics** tab.

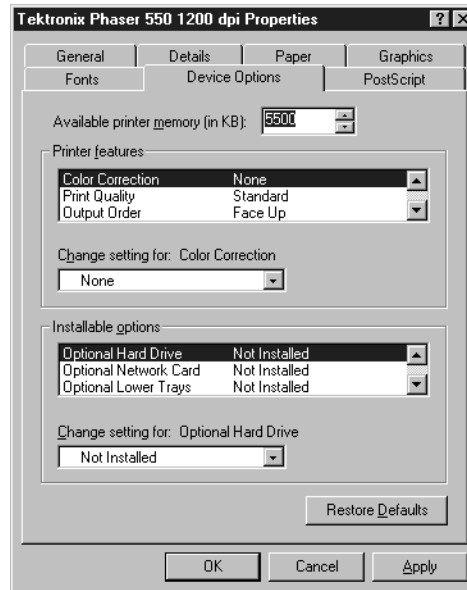
5. In the **Color Control** field, select the **Use image color matching** option, then click the **Choose image color matching method** button.



6. In the **Image Color Matching** dialog box, select **Perform image color matching on the host**, and click **OK**.



7. Click the **Device Options** tab to see the following options:



8. Highlight **Color Correction** in the **Printer features** field.
9. Select **None** as the **Change setting for: Color Correction** field.
10. Click **OK** when finished.

Installing the files

You can use the installer application on either the Phaser 550 CD-ROM or the Printer Software for Windows diskette, to load the color sampler charts, the fonts sampler, and the printer utility files to your computer's hard disk. Or, you can copy the software from the CD-ROM or diskette to your hard disk.

Click on the following topics for more information:

- [Using the installer application](#)
- [Copying files from the CD-ROM or diskette](#)

Using the installer application

1. Insert the Phaser 550 CD-ROM in your computer's CD-ROM drive, or insert the Printer Software for Windows diskette in your computer's disk drive.
2. Do one of the following depending on your Windows system:

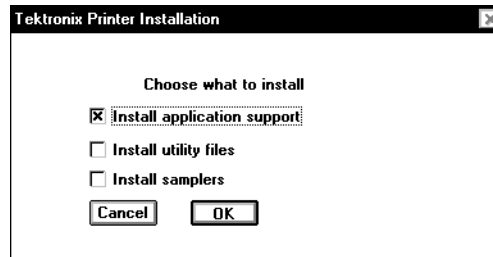
Windows 95:

- a. Click the **Start** icon in the taskbar on your screen. In the menu that appears, click **Run**.
- b. In the **Run** window, type in the drive the CD-ROM or diskette is in, followed by the file name *SETUP.EXE*.
- c. Click **OK**.

Windows 3.1:

- a. In the **Program Manager**, select **Run** from the **File** menu.
- b. At the **Command Line**, type in the drive the CD-ROM or diskette is in followed by the file name *SETUP.EXE*.
- c. Click **OK**.

3. In the **Tektronix Printer Installation** window, select one or more of the following options, then click **OK**:



- **Install Application Support** installs PPDs and a PDF for use with specific applications.
 - **Install Utility Files** installs printer utility files.
 - **Install Samplers** installs color and font samplers.
4. When prompted for a directory name to use for installing the software, use the default directory name *PHSRTOOL* or type in a new name, then click **OK**.



5. At the message dialog box, click **OK**; the **Control Panel** opens.

Copying files from the CD-ROM or diskette

You can copy any of the files from the Phaser 550 CD-ROM or Printer Software for Windows diskette to your computer's hard disk. You can also use the files directly from the CD-ROM or diskette.

Follow usual Windows or DOS procedures for copying files to your hard disk.