

Using a LaserWriter 8.x driver

Some printer drivers use PostScript printer description files (PPDs) to get information about a specific printer. The following instructions are for using the printer with the LaserWriter 8.x driver; follow manufacturer's instructions when using other drivers.

Click on the following topics for more information:

- [Installing a LaserWriter 8.x driver](#)
- [Setting up a LaserWriter 8.x driver with a Phaser 550 printer](#)
- [Using a LaserWriter 8.x driver with a Phaser 550 printer](#)

Installing a LaserWriter 8.x driver

Note *During installation, the LaserWriter 8.x driver leaves other versions of the LaserWriter driver (such as 7.x and 6.x) intact, but overwrites an earlier version of the LaserWriter 8.x driver.*

The LaserWriter 8.x driver software is available from Apple Computer; see your local Apple dealer for details. Refer to the LaserWriter driver's documentation, *LaserWriter 8.x Update Guide*, for instructions on installing the driver.

Setting up a LaserWriter 8.x driver with a Phaser 550 printer

The LaserWriter 8.x driver uses printer-specific PPDs (PostScript Printer Description files) for information on a printer's page sizes, printing options, and media type options. To use the LaserWriter 8.x driver with a Phaser 550 printer, do the following steps depending on the version of the driver you are using. If the printer is busy, it may take some time to complete this configuration procedure; you may want to do this procedure when the printer is idle. You only have to configure a printer once.

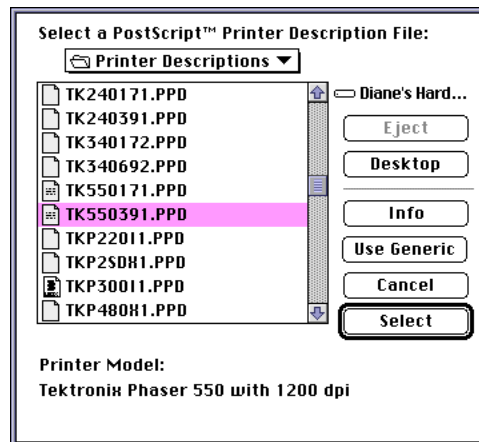
Click on the following topics for more information:

- [Setting up the LaserWriter 8.3 driver](#)
- [Setting up an earlier version \(8.0, 8.1, 8.2\) the LaserWriter 8.x driver](#)

Setting up the LaserWriter 8.3 driver

1. Follow the instructions in [Using the Installer](#) to install the *PPD* printer description files. Select one of the standard options to automatically install all of the printer's software, or select the **PPD files for drivers and applications** option.
2. Open the **Chooser**.
3. Select the **LaserWriter 8** driver icon.
4. Select your printer from the list.
5. Still in the **Chooser**, click the **Setup** button to see a list of options.
6. If the correct PPD file is installed on your hard disk, it is automatically selected.

If the correct PPD file is not properly installed, the following dialog box opens showing the location of the PPD files you installed in Step 1.



Highlight one of the following *PPD* files and click **Select**:

- Use the *TK550171.PPD* file with the standard version of the printer (with 17 fonts).
- Use the *TK550391.PPD* file with the printer's extended features option (with 39 fonts).

Note *If you are not sure of the number of fonts installed in your printer, the printer's startup page lists the number of fonts installed.*

7. In the dialog box that appears, select the appropriate items under **Installable Options** then click **OK**.
8. Click the **Chooser's** close box.

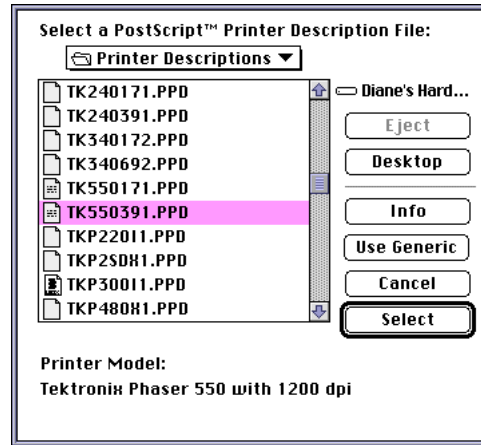
Setting up an earlier version (8.0, 8.1, 8.2) the LaserWriter 8.x driver

1. Follow the instructions in [Using the Installer](#) to install the *PPD* printer description files. Select one of the standard options to automatically install all of the printer's software, or select the **PPD files for drivers and applications** option.
2. Open the **Chooser**.
3. Select the **LaserWriter 8** driver icon.
4. Select your printer from the list.
5. Still in the **Chooser**, click the **Setup** button to see a list of options.
6. In the dialog box that appears, click the **More Choices** button to see the full range of options.

Note *Do not use the **Auto Setup** button; errors can occur with the PPD files. Continue with this procedure to properly set up the driver.*

7. Click the **Printer Info** button, then click the **Update info** button in the next dialog box.
8. Record the information on **PostScript Version** and **Total Memory Installed**; you will need this information later. Click **OK**.

9. Click the **Select PPD** button; the *Printer Descriptions* folder in the *Extensions* folder, inside the *System Folder*, is displayed.



10. Highlight one of the following *PPD* files you installed in Step 1, and click **Select**:
- Use the *TK550171.PPD* file with the standard version of the printer (with 17 fonts).
 - Use the *TK550391.PPD* file with the printer's extended features option (with 39 fonts).

Note *If you are not sure of the number of fonts installed in your printer, the printer's startup page lists the number of fonts installed.*

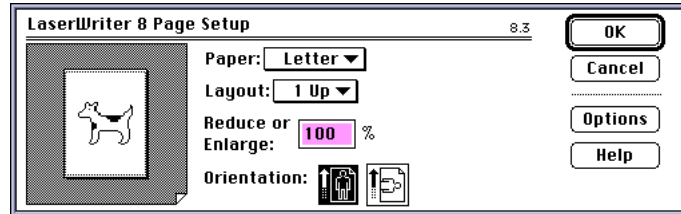
11. Make sure the information under **Printer Model** matches the printer you have and the **PostScript Version** information you got in Step 8.
12. Click **Select**.

Note *If the information under **Printer Model** is not an exact match, use the closest printer name, and call Tektronix Customer Support in the U.S. and Canada at 1-800-835-6100 for the latest PPD file. Outside the U.S. and Canada, contact your local Tektronix reseller. You can also download the latest PPD files from the Tektronix Bulletin Board Service (BBS).*

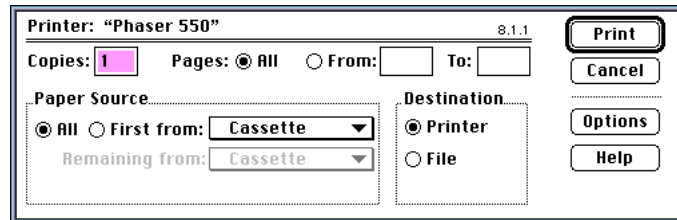
13. Click **Configure**. In the field for **Memory Configuration** under **Installable Options**, select the amount of memory your printer has installed. Check other options either **Installed** or **Not Installed**, as appropriate.
14. Click **OK** in two dialog boxes and close the **Chooser**.

Using a LaserWriter 8.x driver with a Phaser 550 printer

From the **File** menu, open the **Page Setup** dialog box. Use the **Paper** pop-up menu to select the printer's supported paper sizes.



From the **File** menu, open the **Print** dialog box. Select media options and paper trays in the **Paper Source** field.



In the **Print** dialog box, click the **Options** button to see the **Print Options** dialog box. There are printer-specific features listed at bottom of the dialog box.

The LaserWriter 8.3 driver offers ColorSync options.

The screenshot shows the 'Print Options' dialog box for the LaserWriter 8.3 driver. The title bar reads 'Print Options' with a version number '8.3' on the right. The dialog contains several settings: 'Cover Page' with radio buttons for 'None' (selected), 'Before', and 'After Document'; 'Print' with a dropdown menu set to 'Color/Grayscale'; 'Printer Profile' with a dropdown menu set to 'Phaser 550 Profile'; 'PostScript™ Errors' with a dropdown menu set to 'No Special Reporting'; 'Color Correction' with a dropdown menu set to 'Vivid Color'; 'Print Quality' with a dropdown menu set to 'Standard'; and 'Output Order' with a dropdown menu set to 'Face Up'. On the right side, there are buttons for 'OK', 'Cancel', 'Help', and 'Save'. A vertical scrollbar is located on the right side of the main content area.

Print Options 8.3

Cover Page: ☒ None ☐ Before ☐ After Document

Print: Color/Grayscale ▼

Printer Profile: Phaser 550 Profile ▼

PostScript™ Errors: No Special Reporting ▼

Color Correction: Vivid Color ▼

Print Quality: Standard ▼

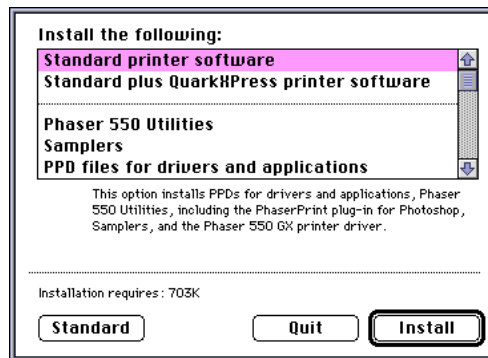
Output Order: Face Up ▼

OK Cancel Help Save

Using the Installer

To install the printer's software, follow this procedure:

1. Disable virus detection software before starting the *Installer* application. Either refer to the virus software's documentation for instructions, or **Restart** the Macintosh while holding down the **Shift** key to start the computer with extensions off.
2. Use either the Phaser 550 diskettes or CD-ROM.
 - **Floppy diskettes:** Insert the Printer Software for the Macintosh diskette into your computer's disk drive.
 - **CD-ROM:** Insert the Phaser 550 CD-ROM into your computer's CD-ROM drive.
3. Double-click the **Phaser 550 Installer** icon. Click **Continue** until the following dialog box appears:



4. Select one of the standard options or select individual options; **Command**-click to select more than one item. Then click **Install**.

5. If you click the **Standard** button, the following dialog box appears. This option installs the **Standard printer software**.

