

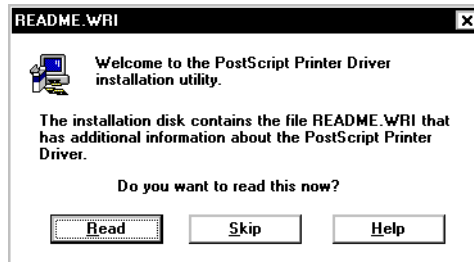
## Installing the Adobe PS3 driver

1. Make sure Windows 3.1 is running.
2. The driver installation overwrites an older version of the Adobe PostScript printer driver. If you already have an Adobe driver installed, you may want to remove your installed Tektronix printers before continuing, and reinstall them later with the newer driver.

Follow these steps to remove printers with an older driver:

- a. From the **Control Panel**, double-click **Printers**.
  - b. In the **Printers** dialog box, select a printer that was set up with an older version of the Adobe driver, and click **Remove**.
  - c. Repeat Steps **a** and **b** for all printers installed with the Adobe driver.
  - d. After you have installed the new driver, you can reinstall your existing printers (PPDs) through the **Adobe PostScript Printers** dialog box in the **Control Panel**.
3. Quit all applications, including the **Control Panel**.
  4. Use either the Phaser 550 CD-ROM or floppy diskette:
    - **CD-ROM:** Insert the Phaser 550 CD-ROM into your CD-ROM drive.
    - **Diskette:** Insert the Adobe PS3 Driver for Windows 3.1 diskette from Tektronix into your computer's disk drive.

5. In the **Program Manager**, select **Run** from the **File** menu.
6. At the **Command Line**, type one of the following, replacing A: with the correct drive, then click **OK**.
  - **CD-ROM:** `A:\win31drv setup`
  - **Diskette:** `A:setup`
7. At the **README.WRI** dialog box, click one of the buttons. The *README* file contains information on installing the driver and application notes. Clicking **Read** opens the *README* file. Clicking **Skip** (or quitting the *README* file) moves you to the next dialog box listed in Step 8.



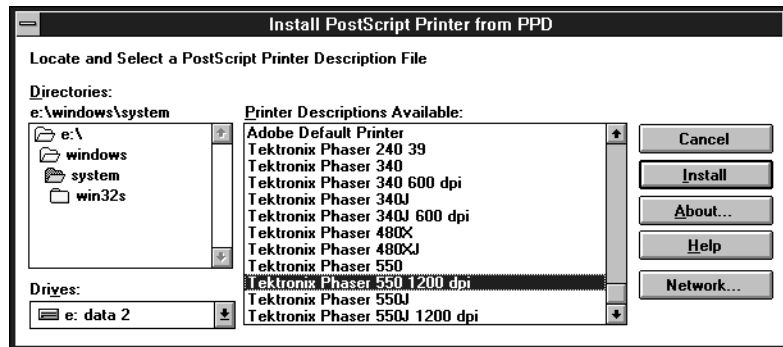
8. In the **PostScript Printer Driver Setup** dialog box, click **Exit** if you need to quit any open applications, or click **Continue** to start the driver installation.



9. You will see a status dialog box during the installation procedure. At the end of the installation, click the **Restart Windows** button.



10. After Windows restarts, the **Install PostScript Printer from PPD** dialog box opens.



11. Select your printer in the **Printer Descriptions Available** list and click **Install**:
- Select **Tektronix Phaser 550** if you have the standard version of the printer with 17 fonts.
  - Select **Tektronix Phaser 550 with 1200 dpi** if you have the printer's extended features option with 39 fonts.

**Note** *If you are not sure of the number of fonts installed in your printer, the printer's startup page lists the number of fonts installed.*

12. At the installation successful message, click OK.
13. Click Close in the **Install PostScript Printer from PPD** dialog box.
14. At the message, click **OK**; the **Control Panel** opens.
15. From the **Control Panel**, double-click **Printers**.
16. In the **Printers** dialog box, select the **Tektronix Phaser 550** printer you just installed, then click **Connect**.
17. In the **Connect** dialog box, select the port the printer is connected to, then click **OK**.

**Note**     *Refer to the README file on the Adobe PS3 Driver for Windows 3.1 diskette from Tektronix, or to the Adobe PostScript Printer Driver User Guide, for more detailed information on installing and using the Adobe PS3 driver.*