

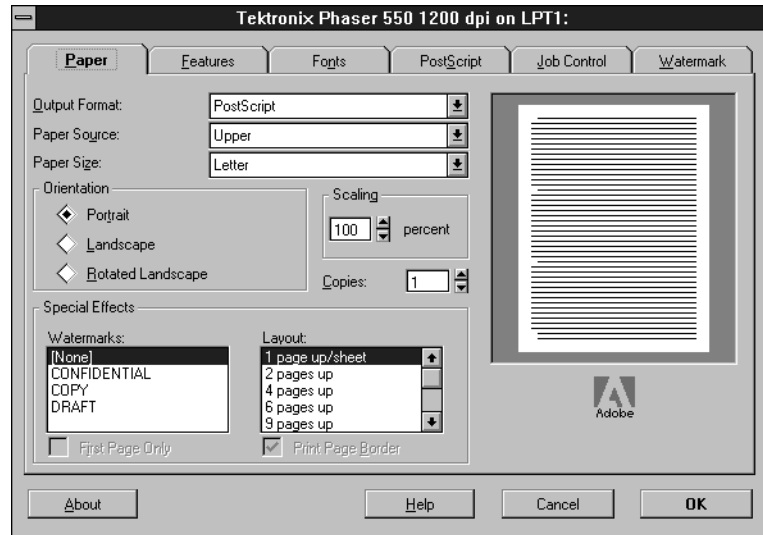
Using printer options in the Adobe PS3 driver

To select printing options, follow these steps:

1. From the **Control Panel**, double-click **Printers**.
2. In the **Printers** dialog box, select the **Tektronix Phaser 550** printer, then click **Setup**. A dialog box appears with the printer's name across the top.
3. Select the following tabs to select printing options:
 - [Paper](#)
 - [Features](#)
 - [PostScript](#)
 - [Job Control](#)

Paper

Click the **Paper** tab to see the following options:



- Select a media size in the **Paper size** field.

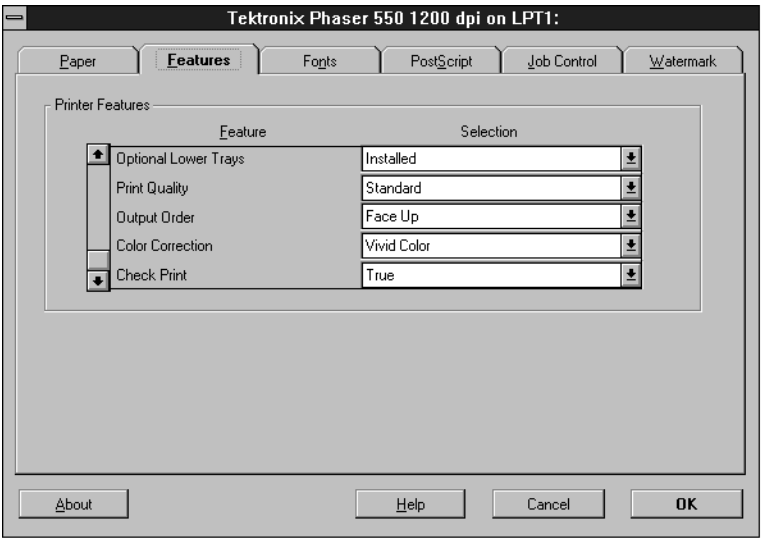
■ Letter (U.S.)	■ A4 (metric)	■ Legal
-----------------	---------------	---------

- Select a media tray or media type in the **Paper Source** field.

■ AutoSelect Tray	■ Upper
■ Middle	■ Lower
■ Paper	■ Transparency
■ Manual Paper	■ Manual Transparency

Features

Click the **Features** tab to see the following options:



- To select TekColor printer color corrections, follow these steps:
 - a. Select **Color Correction** in the scroll list.
 - b. Select a color correction in the pop-up list.

■ None	■ Vivid Color	■ Simulate Display
■ SWOP Press	■ Euroscale Press	■ Commercial Press
■ Monochrome	■ Use Printer Setting	

- To select print quality modes, follow these steps:
 - a. Select **Print Quality** in the scroll list.
 - b. Select a print quality mode in the pop-up list.

■ Fast Color	■ Enhanced*
■ Standard	■ Premium*

- To select the print output order, follow these steps:
 - a. Select **Output Order** in the scroll list.
 - b. Select an option (**Face Down** or **Face Up**) in the pop-up list
- To select printer collation*, follow these steps:
 - a. Select **Quick Collate** in the scroll list.
 - b. Select an option (**False** or **True**) in the pop-up list

When you use **Quick Collate**, make sure the **Output Order** option is set to **Face Down**.

- To select the check print feature*, follow these steps:
 - a. Select **Check Print** in the scroll list.
 - b. Select an option (**False** or **True**) in the pop-up list.

* These options are available only with the printer's extended features option.

PostScript

Click the **PostScript** tab to see PostScript-related options.

- In the **Performance Options** field, select the **Use PostScript Level 2 Features** option.

Job Control

Click the **Job Control** tab to see print job-related options.

- The PostScript header contains important PostScript information that must accompany each print job; it is not a banner page printed with each job. If an option is not selected, an error message is displayed on your computer screen and your job does not print. Click one of the following in the **PostScript Header** field:
 - Select **Download Each Job**. This option downloads PostScript header information with each print job.
 - Select the **Already Downloaded** option to save the PostScript header information in the printer, then click the **Download** button. This option makes print files a little smaller and faster than the first option, but you need to click the **Download** button every time the printer is turned off or reset.