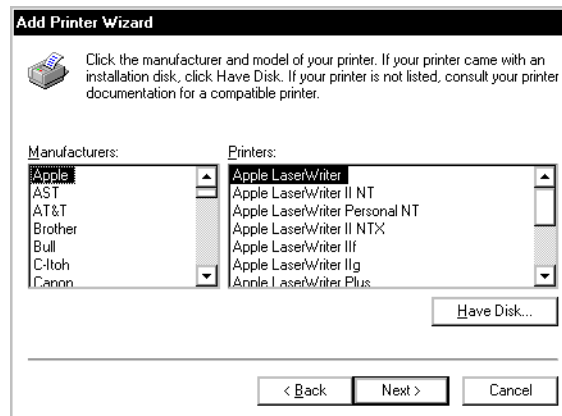
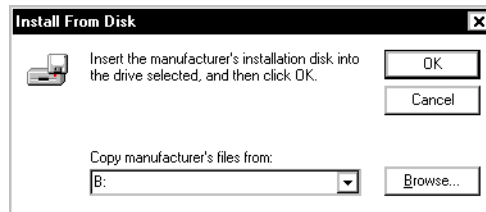


## Adding the Phaser 550 printer to the Windows 95 driver

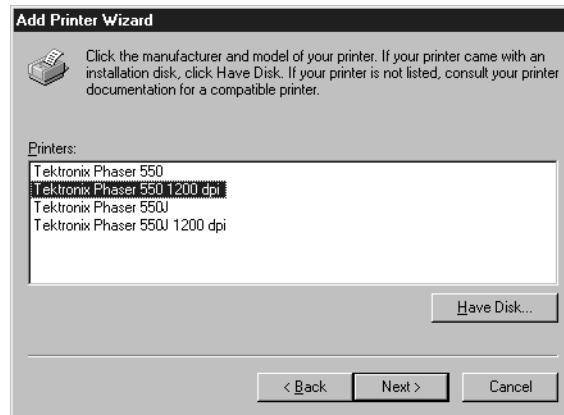
1. Start Windows 95.
2. Insert the Phaser 550 CD-ROM into your computer's CD-ROM drive, or insert the Printer Software for Windows diskette into your computer's disk drive.
3. Click the **Start** icon in the taskbar on your screen. In the menu that appears, click **Settings**.
4. In the menu that appears, click **Printers**; the **Printers** windows appears.
5. In the **Printers** window, double-click **Add Printer**; the **Add Printer Wizard** appears. Click **Next**.
6. Select your printer's connection:
  - Select **Local Printer** if your printer is connected directly to your computer, then click **Next**.
  - Select **Network Printer** if you are accessing your printer through a network. Click **Browse** to search the network and select a printer queue. Then click **Next**.
7. In the window listing **Manufacturers/Printers**, click **Have Disk**.



8. In the **Install From Disk** dialog box, type in the drive for the Phaser 550 CD-ROM or for the Printer Software for Windows diskette, and click **OK**.



9. A list of Tektronix printers appears. Select your printer in the list, then click **Next**.



- Select **Tektronix Phaser 550** if you have the standard version of the printer with 17 fonts.
- Select **Tektronix Phaser 550 with 1200 dpi** if you have the printer's extended features option with 39 fonts.

**Note** *If you are not sure of the number of fonts installed in your printer, the printer's startup page lists the number of fonts installed.*

10. Select the port your printer is connected to, then click **Next**.
11. It is recommended that you use the default printer name shown under **Printer name**. Click **Yes** if you want this printer to be the default printer. Then click **Next**.
12. At the prompt, *Would you like to print a test page?* click **Yes** to verify the printer's connection, or click **NO**. Then click **Finish**.

A status bar appears while files are copied to your computer.

13. If prompted, select the path for the PostScript driver file *ICONLIB.DLL*; this should be in your *WINDOWS/SYSTEM* directory.

If the file isn't installed on your hard disk, do one of the following:

- Insert the Microsoft CD-ROM for Windows 95, select the *WIN95* directory, and click **OK**.
- Insert the requested Microsoft floppy diskette for Windows 95, select the drive, and click **OK**.

The software you need is installed.

14. If your printer is set up correctly, and you clicked **Yes** in Step 12, a test page prints showing the Windows 95 logo and information on your printer.

Your Phaser 550 printer is added to the **Printers** window.