

Using printer options in the Windows 95 driver

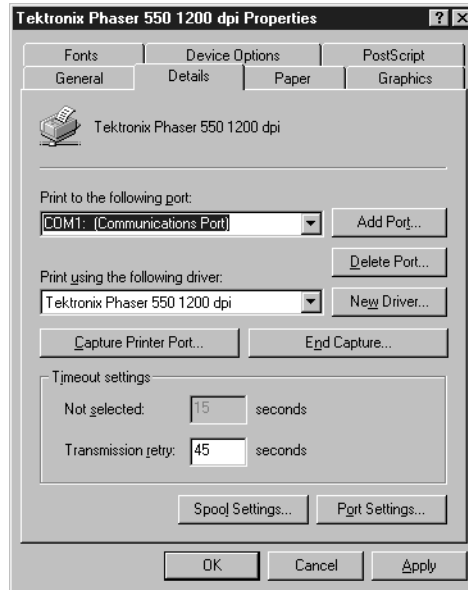
In the **Printers** window, click the **Phaser 550** printer icon with the right mouse button, then select **Properties** from the menu. Click the following tabs to see printing options; refer to your Windows 95 documentation for information on other tabs and options.

Click on the following topics for more information:

- [Details](#)
- [Paper](#)
- [Graphics](#)
- [Device Options](#)
- [PostScript](#)

Details

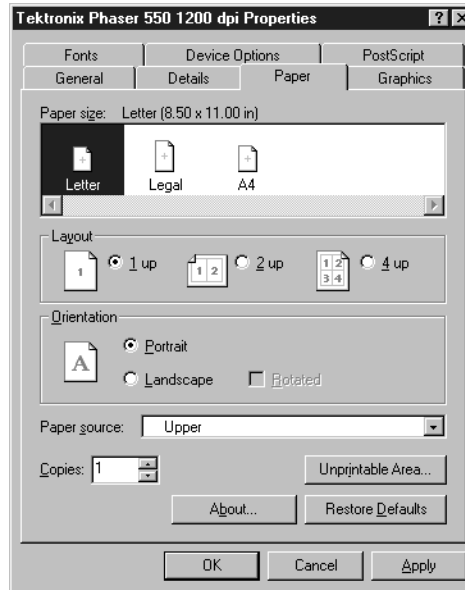
Click the **Details** tab to see the following options:



- Set the **Timeout settings**.
 - **Not Selected:** Type a value of **0**, or between **15** and **999**, in this text box to change the number of seconds Windows waits before notifying you that a printer is off-line. The default is **15** seconds.
 - **Transmission Retry:** On large or multiple-page documents you may see an Alert message that the printer is no longer accepting data before the job is completely sent to the printer. When using a shared printer, you should set this option to a larger value, such as **850** to avoid these unnecessary timeouts. Type a value between **45** and **850** in this text box; the default setting is **45** seconds.

Paper

Click the **Paper** tab to see the following options:



- Select a media size in the **Paper size** field.

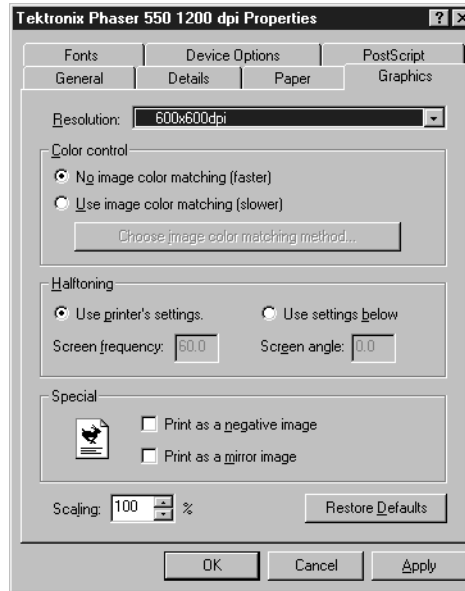
■ Letter (U.S.)	■ A4 (metric)	■ Legal
-----------------	---------------	---------

- Select a media tray or media type in the **Paper source** field.

■ AutoSelect Tray	■ Upper
■ Middle	■ Lower
■ Paper	■ Transparency
■ Manual Paper	■ Manual Transparency

Graphics

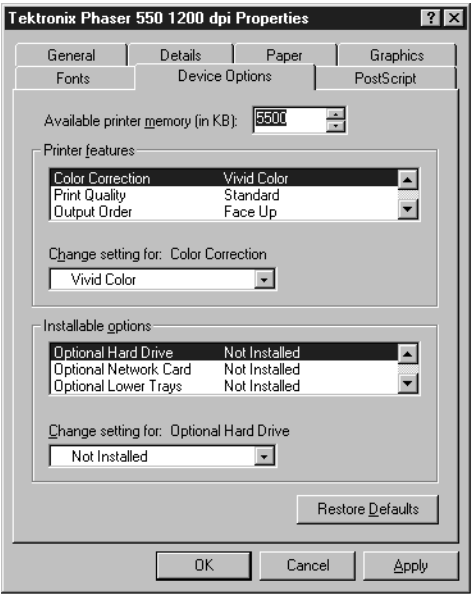
Click the **Graphics** tab to see the following options:



Note *If you are using host color correction, you need to make selections in the **Graphics** and **Device Options** tabs.*

Device Options

Click the **Device Options** tab to see the following options:



- To select TekColor printer color corrections, follow these steps:
 - a. Highlight **Color Correction** in the **Printer features** field.
 - b. Select a color correction in the **Change setting for: Color Correction** field.

■ None	■ Vivid Color	■ Simulate Display
■ SWOP Press	■ Euroscale Press	■ Commercial Press
■ Monochrome	■ Use Printer Setting	

- To select print quality modes, follow these steps:
 - a. Highlight **Print Quality** in the **Printer features** field.
 - b. Select a print quality mode in the **Change setting for: Print Quality** field.

■ Fast Color	■ Enhanced*
■ Standard	■ Premium*

- To select the print output order, follow these steps:
 - a. Highlight **Output Order** in the **Printer features** field.
 - b. Select an option (**Face Down** or **Face Up**) in the **Change setting for: Output Order** field.
- To select printer collation*, follow these steps:
 - a. Highlight **Quick Collate** in the **Printer features** field.
 - b. Select an option (**False** or **True**) in the **Change setting for: Quick Collate** field.

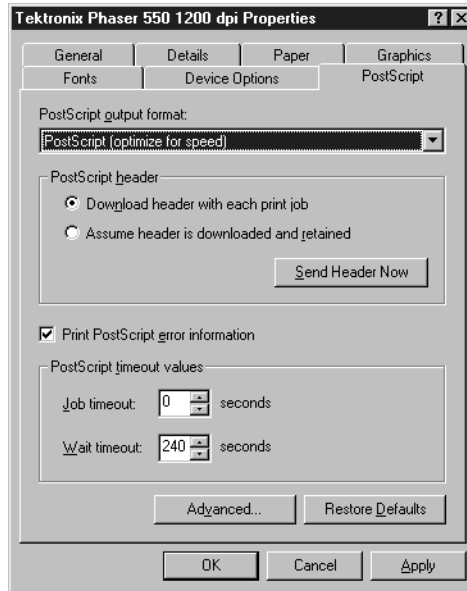
When you use **Quick Collate**, make sure the **Output Order** option is set to **Face Down**.

- To select the check print feature*, follow these steps:
 - a. Highlight **Check Print** in the **Printer features** field.
 - b. Select an option (**False** or **True**) in the **Change setting for: Check Print** field.

* These options are available only with the printer's extended features option.

PostScript

Click the **PostScript** tab to see the following options:



- The PostScript header contains important PostScript information that must accompany each print job; it is not a banner page printed with each job. If an option is not selected, an error message is displayed on your computer screen and your job does not print. Click one of the following in the **PostScript header** field:
 - Select **Download header with each print job**. This option downloads PostScript header information with each print job.
 - Click the **Send Header Now** button to save the PostScript header information in the printer, then select the **Assume header is downloaded and retained** option. This option makes print files a little smaller and faster than the first option, but you need to click the **Send Header Now** button every time the printer is turned off or reset.

- Click the **Advanced** button to see the following options.
- Select **Use PostScript Level 2 features**. Click **OK** when finished.

